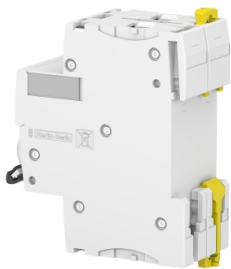


Product datasheet

Specifications



Acti9 Smartlink - Modbus TCP/IP communication I/O module

A9XMEA08

Discontinued on: 23 Jan 2021

Discontinued

Main

Range Of Product	Acti9
Product Name	Acti9 Smartlink
Product Or Component Type	Smart communication module
Device Short Name	Smartlink SI B Ethernet
Application Type	Load control Breaker status monitoring Basic energy metering E Improved load monitoring E, U, I, P, Pf
Number Max Of Connected Devices	Up to 7 wired devices
Group Of Channels	1 group of 7 digital channels 1 group of 1 analog channel
Maximum Supply Current	1.5 A
[Us] Rated Supply Voltage	24 V DC +/- 20 %
Connectivity To Devices	Analog input Digital input and output Pulse output meter
Communication Service	Ethernet Modbus TCP/IP server Web server
Web Server	BMS controller compatible Embedded web page
Web Services	Web page

Complementary

Application Specific I/O	Pulse totalising counter Pulse converter
Protection Type	Short-circuit protection for analogue input Against reverse polarity for auxiliary supply Against reverse polarity for input Overvoltage at 33 V DC for digital output
Immunity To Microbreaks	10 ms
Reset	Factory reset on front face
Input/Output Type	2 inputs + 1 output per digital channel 2 inputs per analog channel
Input Type	Current for analog input, 4...20 mA Voltage for analog input, 0...10 V DC Current sink for digital input, 24 V DC +/- 20 % at 2.5 mA
Maximum Permanent Current	0.005 A for digital input

Disclaimer: This documentation is not intended as a substitute for and is not to be used for determining suitability or reliability of these products for specific user applications

Absolute Accuracy Error	+/- 1 % of full scale for analog input 12 bits
Electronic Filtering Time	2 ms for digital input from state 0 to state 1 2 ms for analog input from state 0 to state 1
Output Type	Logic current source: 24 V - DC - 100 mA
Maximum Voltage Drop	<1 V at state 1 digital output
Inrush Current	0.5 A for digital output 3 A for power supply
Local Signalling	Communication: 1 LED (yellow) NS (Network Status): 1 LED (green, orange and red) Communication (LK/ACT 10/100): 1 LED (green and yellow) Status: 1 LED (green, orange and red)
Type Of Setting	Modbus address 01...247 for address encoders
Mounting Position	Horizontal and vertical on DIN rail
Colour	White (RAL 9003)
Location Of Connection	Front
Connections - Terminals	Spring-loaded terminal Ti24 qty: 7 for digital input/output, ordered separately RJ45 connector qty: 1 for ETHERNET, ordered separately Plug-in connector qty: 1 for supply circuit Plug-in connector qty: 1 for communication bus Plug-in connector qty: 1 for analog input
Clamping Connection Capacity	2 x 0.25 mm² for twisted shielded pairs cable, flexible with cable end for communication bus 2 x 0.25 mm² for twisted shielded pairs cable, flexible without cable end for communication bus 2 x 0.25 mm² for twisted shielded pairs cable, rigid with cable end for communication bus 2 x 0.25 mm² for twisted shielded pairs cable, rigid without cable end for communication bus 2 x 0.25...2 x 1.5 mm² for twisted shielded pairs cable, rigid with cable end for analog input 2 x 0.25...2 x 1.5 mm² for twisted shielded pairs cable, rigid without cable end for analog input 2 x 0.25...2 x 1.5 mm² for twisted shielded pairs cable, flexible with cable end for analog input 2 x 0.25...2 x 1.5 mm² for twisted shielded pairs cable, flexible without cable end for analog input 1 x 0.5...1 x 1.5 mm², flexible with cable end for control 1 x 0.5...1 x 1.5 mm², flexible without cable end for control 1 x 0.5...1 x 1.5 mm², rigid with cable end for control 1 x 0.5...1 x 1.5 mm², rigid without cable end for control 2 x 0.2...2 x 1.5 mm², flexible with cable end for supply circuit 2 x 0.2...2 x 1.5 mm², flexible without cable end for supply circuit 2 x 0.2...2 x 1.5 mm², rigid with cable end for supply circuit 2 x 0.2...2 x 1.5 mm², rigid without cable end for supply circuit
Wire Stripping Length	Control: 10 mm Supply circuit: 7 mm Analog input: 7 mm Communication bus: 7 mm
Communication Network Type	RS485 Modbus RTU master SUB-D 9 9.6...19.2 kbauds Ethernet Modbus TCP/IP server RJ45 10/100 Mbit/s
9 Mm Pitches	0 useful
Height	22.5 mm
Width	359 mm
Depth	42 mm
Net Weight	180 g
Provided Equipment	Set of 1 connector Set of 1 bus connector Set of 1 power supply connector Set of 2 locking clips

Range Compatibility	Acti 9 iTL auxiliary Acti 9 RCA iC60 Ti24 connector Linergy Linergy FM Acti 9 iOF+SD 24 Acti 9 iACT24 Acti 9 iATL24 PowerLogic pulse output meter PowerLogic Modbus meter Acti 9 Acti9 iCT auxiliary Acti 9 Acti9 iC60 Acti 9 Acti9 iID Acti 9 Acti9 iSW-NA Acti 9 Acti9 iDPN Vig Acti 9 Acti9 C40 Multi9 Multi9 C60 Acti 9 Acti9 DT40 Acti 9 Acti9 DT60 Acti 9 Acti9 I-NA Acti 9 Acti9 ITG40 Acti 9 Acti9 iDPN Acti 9 Acti9 Reflex iC60 Ti24 connector
Commissioning Interface	Acti 9 Smart test Web page
Compatibility Code	Acti 9 Smartlink IP

Environment

Ip Degree Of Protection	IP20
Pollution Degree	3
Electromagnetic Compatibility	Resistance to electrostatic discharge (air discharge), 8 kV, conforming to IEC 61000-4-2 Resistance to electrostatic discharge (contact discharge), 4 kV, conforming to IEC 61000-4-2 Resistance to radiated electromagnetic fields (80 MHz...3 GHz), 10 V/m, conforming to IEC 61000-4-3 Power supply: resistance to fast transient (5...100 kHz), 2 kV, conforming to IEC 61000-4-4 Input/output: resistance to fast transient, 1 kV, conforming to IEC 61000-4-4 Communication bus: resistance to fast transient, 1 kV, conforming to IEC 61000-4-4 Conducted EMC (0.15...80 MHz), 10 V, conforming to IEC 61000-4-6 Immunity to magnetic fields at network frequency, 30 A/m, conforming to IEC 61000-4-8 Radiated emission (30...1000 MHz), class A, conforming to IEC 61131-3 Ed.3 Conducted emission (0.15...30 MHz), class A, conforming to IEC 61131-2
Environmental Characteristic	Corrosive 3C2 conforming to IEC 60721-3-3 Salt mist 2 conforming to IEC 60068-2-52
Vibration Resistance	1 gn, amplitude = 3.5 mm (f = 5...300 Hz)10 cycles conforming to IEC 60068-2-6
Shock Resistance	15 gn for 11 ms conforming to IEC 60068-2-27
Fire Resistance	Other parts: 650 °C (30 s) conforming to IEC 60695-2-10 On connection terminals: 960 °C (30 s) conforming to IEC 60695-2-10
Tropicalisation	2
Relative Humidity	93 % at 40 °C
Operating Altitude	0...2000 m
Ambient Air Temperature For Operation	-25...60 °C
Ambient Air Temperature For Storage	-40...80 °C

Packing Units

Unit Type Of Package 1	PCE
Number Of Units In Package 1	1

Sustainability



Green Premium™ label is Schneider Electric’s commitment to delivering products with best-in-class environmental performance. Green Premium promises compliance with the latest regulations, transparency on environmental impacts, as well as circular and low-CO₂ products.

Guide to assessing product sustainability is a white paper that clarifies global eco-label standards and how to interpret environmental declarations.

[Learn more about Green Premium >](#)

[Guide to assess a product’s sustainability >](#)



Transparency RoHS/REACH

Well-being performance



Mercury Free



Rohs Exemption Information

Yes

Certifications & Standards

Reach Regulation

[REACH Declaration](#)

Eu Rohs Directive

Compliant with Exemptions

China Rohs Regulation

[China RoHS declaration](#)

Environmental Disclosure

[Product Environmental Profile](#)

Circularity Profile

[End of Life Information](#)