

Product data sheet

Specifications



soft starter for asynchronous motor,
Altistart 48, 124A, 208..690V,
30..110kW

ATS48C14Y

! Discontinued - Service only

! Discontinued on: Aug 7, 2023

! To be end-of-service on: Dec 31, 2030

Main

Range Of Product	Altistart 48
Product Or Component Type	Soft starter
Product Destination	Asynchronous motors
Product Specific Application	Heavy duty industry and pumps
Device Short Name	ATS48
Utilisation Category	AC-53A
Ue Power Supply Voltage	208...690 V - 15...10 %
Power Supply Frequency	50...60 Hz - 5...5 %
Motor Power Kw	110 kW 660 V for standard applications 110 kW 690 V for standard applications 30 kW 230 V for severe applications 37 kW 230 V for standard applications 55 kW 400 V for severe applications 55 kW 440 V for severe applications 75 kW 400 V for standard applications 75 kW 440 V for standard applications 75 kW 500 V for severe applications 75 kW 525 V for severe applications 90 kW 500 V for standard applications 90 kW 525 V for standard applications 90 kW 660 V for severe applications 90 kW 690 V for severe applications
Motor Power Hp	100 hp 460 V for standard applications 100 hp 575 V for severe applications 125 hp 575 V for standard applications 30 hp 208 V for severe applications 40 hp 208 V for standard applications 40 hp 230 V for severe applications 50 hp 230 V for standard applications 75 hp 460 V for severe applications

Complementary

Device Connection	In the motor supply line
Protection Type	Phase failure line Thermal protection motor Thermal protection starter
Standards	EN/IEC 60947-4-2

Disclaimer: This documentation is not intended as a substitute for and is not to be used for determining suitability or reliability of these products for specific user applications

Product Certifications	UL C-Tick CSA TCF CCC NOM 117 DNV GOST SEPRO
Marking	CE
Discrete Input Number	5
Discrete Input Type	PTC, 750 Ohm 77 °F (25 °C) Stop, Run, LI3, LI4) logic, <= 8 mA 4300 Ohm
Discrete Input Logic	Positive logic Stop, Run, LI3, LI4 < 5 V <= 2 mA > 11 V, >= 5 mA
Minimum Switching Current	10 mA 6 V DC relay outputs
Discrete Output Number	2
Discrete Output Type	LO1) logic output 0 V common configurable LO2) logic output 0 V common configurable R1) relay outputs fault relay NO R2) relay outputs end of starting relay NO R3) relay outputs motor powered NO
Analogue Output Type	Current output AO 0-20 mA or 4-20 mA 500 Ohm
Communication Port Protocol	Modbus
Connector Type	1 RJ45
Communication Data Link	Serial
Physical Interface	RS485 multidrop
Transmission Rate	4800, 9600 or 19200 bps
Function Available	External bypass (optional)
Operating Position	Vertical +/- 10 degree
Height	13.39 in (340 mm)
Width	7.87 in (200 mm)
Depth	10.43 in (265 mm)
Net Weight	27.34 lb(US) (12.4 kg)

Environment

Electromagnetic Compatibility	Conducted and radiated emissions level A IEC 60947-4-2 Conducted and radiated emissions level B IEC 60947-4-2 Damped oscillating waves level 3 IEC 61000-4-12 Electrostatic discharge level 3 IEC 61000-4-2 Immunity to electrical transients level 4 IEC 61000-4-4 Immunity to radiated radio-electrical interference level 3 IEC 61000-4-3 Voltage/current impulse level 3 IEC 61000-4-5
Relative Humidity	0...95 % without condensation or dripping water EN/IEC 60068-2-3
Ambient Air Temperature For Operation	104...140 °F (40...60 °C) with current derating of 2 % per °C) 14...104 °F (-10...40 °C) without derating)
Ambient Air Temperature For Storage	-13...158 °F (-25...70 °C)
Operating Altitude	<= 1000 m without derating > 1000...2000 m with current derating of 2.2 % per additional 100 m

Packing Units

Unit Type Of Package 1	PCE
------------------------	-----

Number Of Units In Package 1	1
Package 1 Height	13.39 in (34 cm)
Package 1 Width	16.93 in (43 cm)
Package 1 Length	18.11 in (46 cm)
Package 1 Weight	32.83 lb(US) (14.892 kg)
Unit Type Of Package 2	P06
Number Of Units In Package 2	2
Package 2 Height	28.94 in (73.5 cm)
Package 2 Width	31.50 in (80 cm)
Package 2 Length	23.62 in (60 cm)
Package 2 Weight	85.98 lb(US) (39 kg)

Contractual warranty

Warranty	18 months
----------	-----------

Sustainability

Green Premium™ label is Schneider Electric's commitment to delivering products with best-in-class environmental performance. Green Premium promises compliance with the latest regulations, transparency on environmental impacts, as well as circular and low-CO₂ products.

Guide to assessing product sustainability is a white paper that clarifies global eco-label standards and how to interpret environmental declarations.

[Learn more about Green Premium >](#)

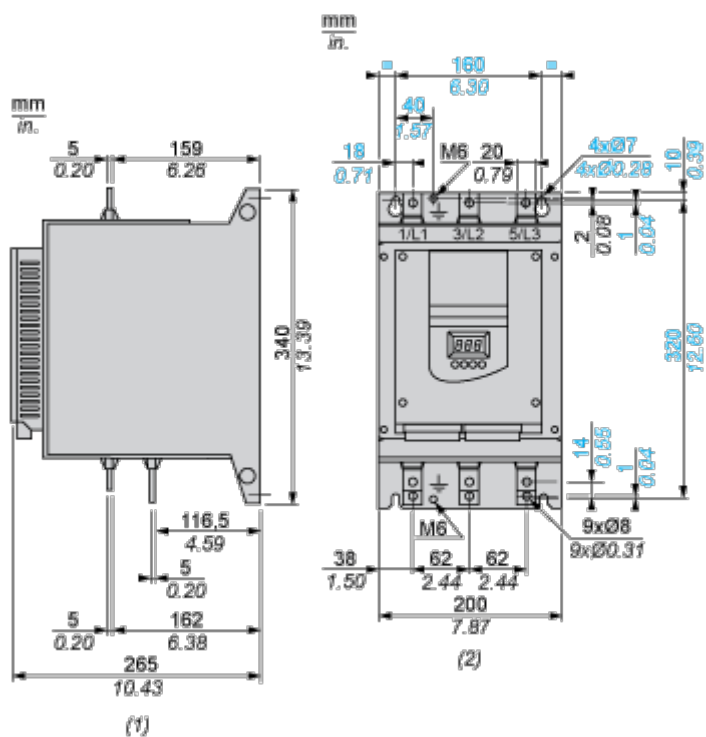
[Guide to assess a product's sustainability >](#)

Well-being performance

 Mercury Free	
 Rohs Exemption Information	Yes
Reach Regulation	REACH Declaration
Eu Rohs Directive	Pro-active compliance (Product out of EU RoHS legal scope)
China Rohs Regulation	China RoHS declaration
Weee	The product must be disposed on European Union markets following specific waste collection and never end up in rubbish bins

Dimensions Drawings

Dimensions



(1) Right View
(2) Front View

Mounting and Clearance

Clearance

