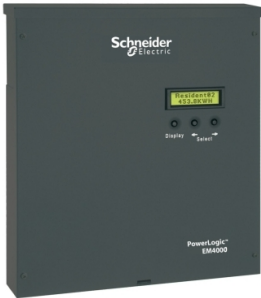


Product data sheet

Specifications

SQUARE D



EM4000 multi-circuit energy meter,
24 x 333 mV inputs, 120V control
power 60 Hz

METSEEM403316

Main

Range	PowerLogic
Product Or Component Type	Multi-circuit energy meter
Product Name	PowerLogic EM4000
Device Short Name	EM4033
Power Monitoring	Basic instrumentation
Energy Management	Sub billing and cost allocation Billing analysis
Device Application	Sub billing
Power Quality Analysis	compliance monitoring
Type Of Measurement	Current per phase, rms Voltage per phase, rms Negative reactive energy Apparent energy Pulse count Active and reactive power Apparent power Positive active energy Positive reactive energy Negative active energy
[Us] Rated Supply Voltage	120 V AC 60 Hz
Network Frequency	60 Hz

Complementary

Sampling Rate	256 samples/cycle
Display Type	Backlit LCD
Messages Display Capacity	2 lines of 16 characters
Current Transformer Input	Solid core CT 0.333 V24 x single pole Solid core CT 0.333 V12 x single phase Solid core CT 0.333 V8 x three phase Split core CT 0.333 V24 x single pole Split core CT 0.333 V12 x single phase Split core CT 0.333 V8 x three phase
Measurement Voltage	80...480 V without PTs 480...999000 V with external PTs
Measurement Accuracy	+/- 0.5 % of the measuring range
Number Of Inputs	2 pulse
Communication Port Protocol	BACnet IP FTP HTTP Modbus TCP/IP SNTP

Disclaimer: This documentation is not intended as a substitute for and is not to be used for determining suitability or reliability of these products for specific user applications

Communication Port Support	RJ45 ETHERNET RS485
Communication Of Data	Voltage Positive active energy Positive reactive energy Negative reactive energy Apparent energy Negative active energy

Environment

Mounting Mode	Wall mount
Device Mounting	Wall mounted
Enclosure Type	NEMA type 1
Type Of Installation	Indoor installation Enclosed outdoor
Relative Humidity	90 % 104 °F (40 °C)
Pollution Degree	2
Ambient Air Temperature For Operation	-40...158 °F (-40...70 °C)
Ambient Air Temperature For Storage	-40...158 °F (-40...70 °C)
Operating Altitude	<= 3000 m
Standards	ANSI/TIA-968-A : 2002 EN 55022 FCC part 15 class B IEC 6100-4-5 ICES-003 CSA C22.2 No 61010-1-4 CSA C22.2 No 61010-1
Product Certifications	UL
Width	12.01 in (30.5 cm)
Depth	2.17 in (5.5 cm)
Height	13.19 in (33.5 cm)
Net Weight	8.82 lb(US) (4 kg)

Packing Units

Unit Type Of Package 1	PCE
Number Of Units In Package 1	1
Package 1 Height	13.19 in (33.5 cm)
Package 1 Width	12.01 in (30.5 cm)
Package 1 Length	2.17 in (5.5 cm)
Package 1 Weight	3.50 lb(US) (1.588 kg)

Sustainability

Green Premium™ label is Schneider Electric’s commitment to delivering products with best-in-class environmental performance. Green Premium promises compliance with the latest regulations, transparency on environmental impacts, as well as circular and low-CO₂ products.

Guide to assessing product sustainability is a white paper that clarifies global eco-label standards and how to interpret environmental declarations.

[Learn more about Green Premium >](#)

[Guide to assess a product’s sustainability >](#)

Eu Rohs Directive	Not compliant
China Rohs Regulation	China RoHS declaration Product out of China RoHS scope. Substance declaration for your information
Weee	The product must be disposed on European Union markets following specific waste collection and never end up in rubbish bins