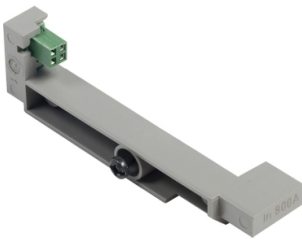


# Product data sheet

Specifications



Circuit breaker accessory,  
MasterPacT NW, sensor plug,  
1200A

S48824

## Main

Range Of Product	MasterPact NW
Product Or Component Type	Sensor plug
Accessory / Separate Part Category	Sensor accessory

## Complementary

[In] Rated Current	1200 A
[Uc] Control Circuit Voltage	240 V AC 480 V AC 600 V AC
Type Of Installation	Field installable
Tightening Torque	7.08 lbf.in (0.8 N.m)

## Environment

Product Certifications	UL ANSI IEC
------------------------	-------------------

## Packing Units

Unit Type Of Package 1	PCE
Number Of Units In Package 1	1
Package 1 Weight	4.00 oz (113.398 g)

Disclaimer: This documentation is not intended as a substitute for and is not to be used for determining suitability or reliability of these products for specific user applications

# Sustainability

**Green Premium™ label** is Schneider Electric's commitment to delivering products with best-in-class environmental performance. Green Premium promises compliance with the latest regulations, transparency on environmental impacts, as well as circular and low-CO<sub>2</sub> products.

**Guide to assessing product sustainability** is a white paper that clarifies global eco-label standards and how to interpret environmental declarations.

[Learn more about Green Premium >](#)

[Guide to assess a product's sustainability >](#)

Eu Rohs Directive	Under investigation
-------------------	---------------------

---