

# Product datasheet

Specifications



10.1 inch widescreen, Universal model, 2serial ports,1Ethernet port, embeddedRTC

HMIGXU5512

⚠ To be discontinued on: Dec 31, 2024

⚠ To be end-of-service on: Dec 31, 2025

⚠ To be discontinued

## Main

Range Of Product	Harmony Easy GXU
Product Or Component Type	Advanced touchscreen panel
Display Type	LCD touch screen
Display Colour	65536 colours
Display Resolution	800 x 480 pixels WVGA
Display Size	10.1 inch

## Complementary

Backlight Lifespan	20000 hours
[Us] Rated Supply Voltage	24 V DC
Software Designation	Vijeo Designer Basic configuration software
Memory Description	Internal, 48 MB for application Internal DDR, 128 MB Internal, 128 kB for backup
Integrated Connection Type	USB type mini B COM1 serial link: 9-way male SUB-D connector, RS232C COM2 serial link: 9-way male SUB-D connector, RS422/RS485 USB type A Ethernet 10/100BASE-TX
Cut-Out Dimensions	255 x 185 mm

## Environment

Quality Labels	CE
Ambient Air Temperature For Operation	0...50 °C
Ambient Air Temperature For Storage	-20...60 °C
Ip Degree Of Protection	IP65 (front panel)

## Packing Units

Unit Type Of Package 1	PCE
Number Of Units In Package 1	1
Package 1 Height	9.4 cm
Package 1 Width	23.9 cm
Package 1 Length	32.4 cm

Disclaimer: This documentation is not intended as a substitute for and is not to be used for determining suitability or reliability of these products for specific user applications

Package 1 Weight	1.5 kg
Unit Type Of Package 2	S04
Number Of Units In Package 2	7
Package 2 Height	30 cm
Package 2 Width	40 cm
Package 2 Length	60 cm
Package 2 Weight	11398 g
Unit Type Of Package 3	P12
Number Of Units In Package 3	84
Package 3 Height	95 cm
Package 3 Width	80 cm
Package 3 Length	120 cm
Package 3 Weight	145776 g

# Sustainability


**Green Premium™ label** is Schneider Electric’s commitment to delivering products with best-in-class environmental performance. Green Premium promises compliance with the latest regulations, transparency on environmental impacts, as well as circular and low-CO<sub>2</sub> products.

**Guide to assessing product sustainability** is a white paper that clarifies global eco-label standards and how to interpret environmental declarations.

[Learn more about Green Premium >](#)


[Guide to assess a product’s sustainability >](#)

## Resource performance




Upgradeable Through Digital Modules

## Well-being performance



Mercury Free



Rohs Exemption Information

Yes

Reach Regulation

[REACH Declaration](#)

Eu Rohs Directive

Pro-active compliance (Product out of EU RoHS legal scope)

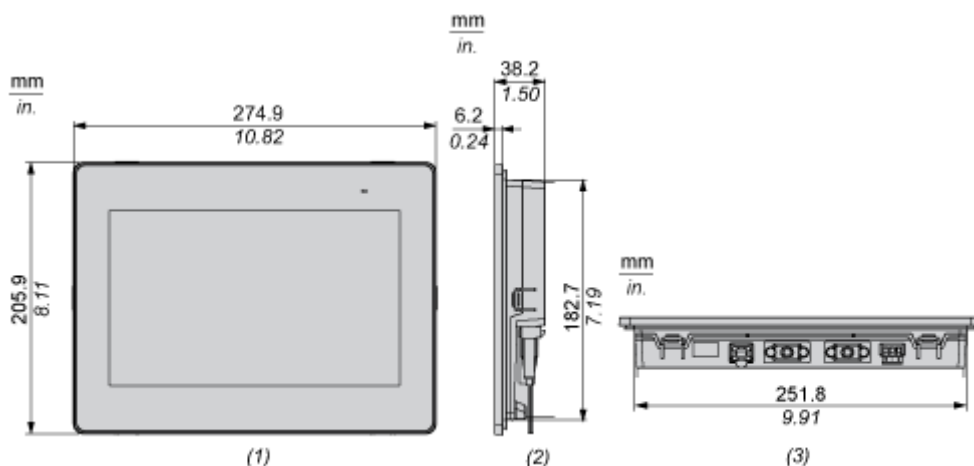
China Rohs Regulation

[China RoHS declaration](#)

## Dimensions Drawings

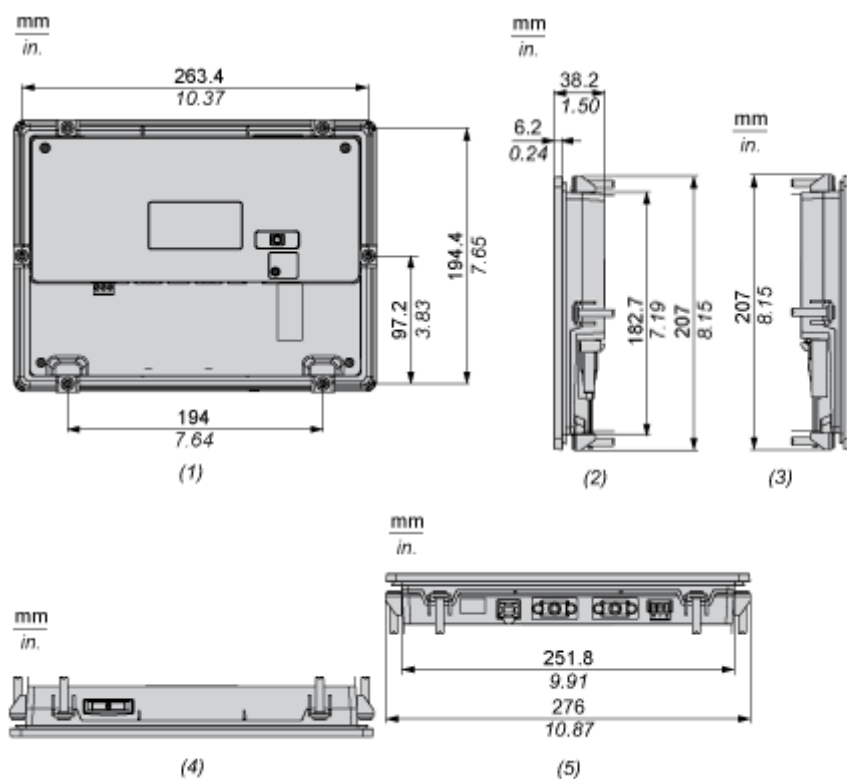
## Dimensions

### External Dimensions



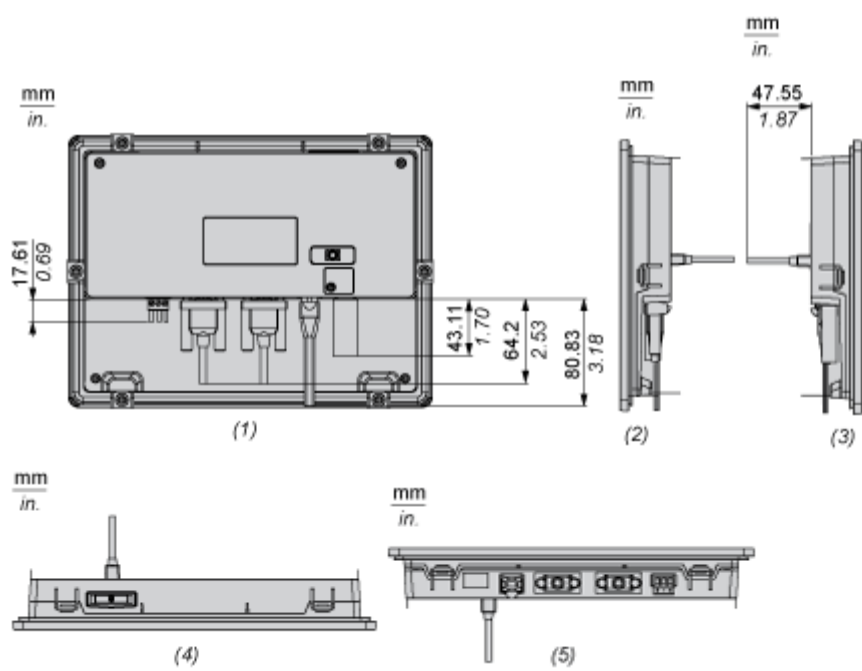
- (1) Front
- (2) Right
- (3) Bottom

## Installation with Installation Fasteners



- (1) Rear
- (2) Right
- (3) Left
- (4) Top
- (5) Bottom

### Dimensions with Cables

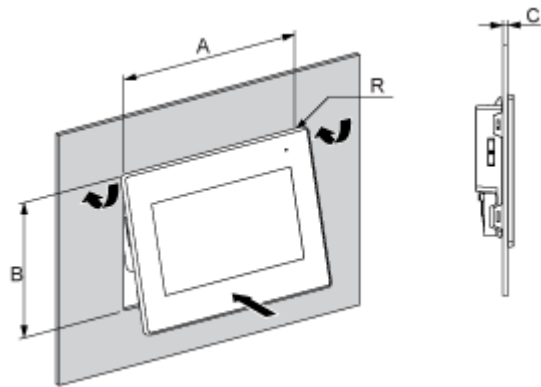


- (1) Rear
- (2) Right
- (3) Left
- (4) Top
- (5) Bottom

Mounting and Clearance

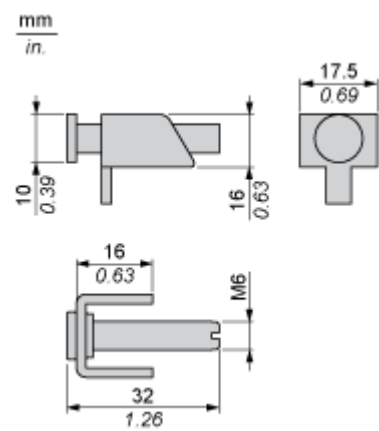
Mounting

Panel Cut Dimensions



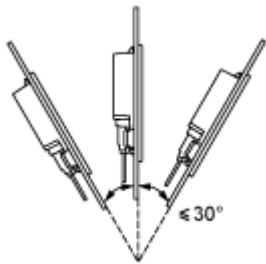
A		B		C		R	
mm	in.	mm	in.	mm	in.	mm	in.
255 <sup>±1</sup>	10.04 <sup>±0.04</sup>	185 <sup>+1</sup>	7.28 <sup>+0.04</sup>	1...5	0.04...0.19	3 max	0.12 max.

Installation Fasteners Dimensions



Installation Requirements

Mounting Angle



When installing the panel in a slanted position, and the panel face inclines more than 30°, the ambient temperature must not exceed 40 °C (104 °F).

Clearance

