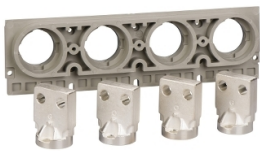


# Product datasheet

Specifications



Vertical rear connection, MasterPact NT06/NT16, ComPacT NS630b/NS1600, 4 poles, fixed, 630A/1600A, top mounting

33614

## Main

Range Of Product	MasterPact NT ComPacT NS630b...1600 new generation
Product Or Component Type	Rear connection
Accessory / Separate Part Category	Connection accessory
Range Compatibility	Masterpact MasterPact NT ComPact ComPact NS630b...1600
Poles Description	4P
Mounting Mode	Fixed
[In] Rated Current	630...1600 A

## Complementary

Location Of Connection	Rear
Localisation On Device	Top
Connection Position	Vertical
Connection Pitch	70 mm

## Packing Units

Unit Type Of Package 1	PCE
Number Of Units In Package 1	1
Package 1 Height	2.0 cm
Package 1 Width	8.7 cm
Package 1 Length	28.0 cm
Package 1 Weight	2.684 kg

## Contractual warranty

Warranty	18 months
----------	-----------

Disclaimer: This documentation is not intended as a substitute for and is not to be used for determining suitability or reliability of these products for specific user applications

## Sustainability

**Green Premium™ label** is Schneider Electric's commitment to delivering products with best-in-class environmental performance. Green Premium promises compliance with the latest regulations, transparency on environmental impacts, as well as circular and low-CO<sub>2</sub> products.

**Guide to assessing product sustainability** is a white paper that clarifies global eco-label standards and how to interpret environmental declarations.

[Learn more about Green Premium >](#)

[Guide to assess a product's sustainability >](#)

## Well-being performance

✓	Reach Free Of Svhc	
✓	Toxic Heavy Metal Free	
✓	Mercury Free	
✓	Rohs Exemption Information	Yes
Reach Regulation	REACH Declaration	
Eu Rohs Directive	Compliant EU RoHS Declaration	
China Rohs Regulation	China RoHS declaration	
Weee	The product must be disposed on European Union markets following specific waste collection and never end up in rubbish bins	