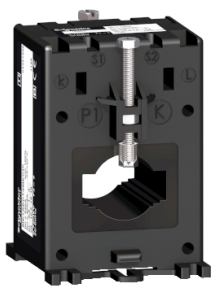


# Product datasheet

Specifications



## current transformer tropicalised DIN mount 300 5 for cables d. 22 and bars 10x30

METSECT5ME030

! Discontinued

! Discontinued on: 5 Aug 2021

! End-of-service on: 31 Dec 2021

### Main

Range	PowerLogic
Product Name	CT
Product Or Component Type	Current transformer
Secondary Current	5 A
Accuracy Class	Class 1 at 11 VA Class 0.5 at 7.5 VA Class 3 at 14 VA
[In] Rated Current	300 A

### Complementary

Current Transformer Type	Tropicalised for busbar and cable
Current Transformer Ratio	300/5
[Ith] Conventional Free Air Thermal Current	18 kA
Dynamic Withstand Current	2.5 Ith
Maximum Safety Factor	5
[Ue] Rated Operational Voltage	< 720 V AC 50/60 Hz
[Ui] Rated Insulation Voltage	3 kV
Mounting Mode	Clip-on By screws Insulated locking screw
Mounting Support	DIN rail Mounting plate Busbar
Width	56 mm outside:
Height	84 mm outside:
Depth	42 mm outside:
Diameter	22 mm
Net Weight	0.32 kg
[Uimp] Rated Impulse Withstand Voltage	3 kV
Electrical Insulation Class	Class B
Cable Outer Diameter	22 mm

Disclaimer: This documentation is not intended as a substitute for and is not to be used for determining suitability or reliability of these products for specific user applications

Opening Of Bars	30.5 x 10.5
	20.5 x 12.5
	25.5 x 11.5
Sealing	Without

## Environment

Standards	IEC 61869-2
	VDE 0414
Product Certifications	CE
Ip Degree Of Protection	IP20
Relative Humidity	0...95 %
Ambient Air Temperature For Operation	-25...60 °C

# Sustainability

**Green Premium™ label** is Schneider Electric’s commitment to delivering products with best-in-class environmental performance. Green Premium promises compliance with the latest regulations, transparency on environmental impacts, as well as circular and low-CO<sub>2</sub> products.

**Guide to assessing product sustainability** is a white paper that clarifies global eco-label standards and how to interpret environmental declarations.

[Learn more about Green Premium >](#)

[Guide to assess a product’s sustainability >](#)

Eu Rohs Directive	Compliant <a href="#">EU RoHS Declaration</a>
China Rohs Regulation	<a href="#">China RoHS declaration</a> Product out of China RoHS scope. Substance declaration for your information
Weee	The product must be disposed on European Union markets following specific waste collection and never end up in rubbish bins