

Product datasheet

Specifications



Modular base controller, Modicon TSX Micro, UNI-TELWAY, 0.5A, 16 discrete inputs

TSX3710028DR1

⚠ To be discontinued on: 31-Dec-2027

⚠ To be end-of-service on: 31-Dec-2027

⚠ Discontinued - Service only

Main

Range Of Product	Modicon TSX Micro automation platform
Product Or Component Type	Modular base controller
Primary Voltage	100...240 V 90...264 V AC
Input Current	2 mA 60 A
Immunity To Microbreaks	20 ms
Number Output Current	0.5 A

Complementary

Number Of Slots	2
Module Type	Screw terminal discrete I/O
Discrete Input Number	16 discrete input(s) at 24 V for AC
Discrete Output Number	12 for relay
Integrated Connection Type	1 serial link Uni-Telway 19.2 kbit/s 1 Modbus Modbus RTU 19.2 kbit/s
Realtime Clock	With
Memory Description	Internal RAM 14 Kwords data Flash 15 Kwords data
Maximum Size Of Object Areas	256 %Mi 1 %MWi internal words 128 %KW constant words
Execution Time Per Instruction	0.25 µs Boolean without PCMCIA card 4.81 µs arithmetic REAL floating without PCMCIA card
Execution Time For 1 Kinstruction	3.03 100 % Boolean without PCMCIA card 0.25 65 % Boolean and 35 % numerical without PCMCIA card
Application Structure	1 master task 8 event tasks 1 fast task
System Overhead	1.9 ms for master task
Protection Type	Short-circuit Overload protection
Network Frequency	50...60 Hz
Total Useful Secondary Power	24 W

Disclaimer: This documentation is not intended as a substitute for and is not to be used for determining suitability or reliability of these products for specific user applications

Electromagnetic Compatibility	Electrostatic discharge conforming to IEC 1000-4-2 level 3 Electromagnetic field immunity test conforming to IEC 1000-4-3 level 3 Resistance to fast transient conforming to IEC 1000-4-4 level 3 Immunity to impulse waves conforming to IEC 1000-4-5 Damped oscillatory wave conforming to IEC 1000-4-12 Immunity to electromagnetic interference conforming to IEC 61131-2
-------------------------------	--

Environment

Ambient Air Temperature For Operation	0...60 °C
Ambient Air Temperature For Storage	-25...70 °C
Relative Humidity	10...95 % without condensation for operation 5...95 % without condensation for operation
Operating Altitude	0...2000 m
Width	282.7 mm
Height	151 mm
Depth	152 mm
Net Weight	1.91 kg

Packing Units

Unit Type Of Package 1	PCE
Number Of Units In Package 1	1
Package 1 Height	15.500 cm
Package 1 Width	16.500 cm
Package 1 Length	18.000 cm
Package 1 Weight	1.939 kg
Unit Type Of Package 2	S04
Number Of Units In Package 2	6
Package 2 Height	30.000 cm
Package 2 Width	40.000 cm
Package 2 Length	60.000 cm
Package 2 Weight	12.360 kg

Contractual warranty

Warranty	18 months
----------	-----------

Sustainability

Green Premium™ label is Schneider Electric's commitment to delivering products with best-in-class environmental performance. Green Premium promises compliance with the latest regulations, transparency on environmental impacts, as well as circular and low-CO₂ products.

Guide to assessing product sustainability is a white paper that clarifies global eco-label standards and how to interpret environmental declarations.

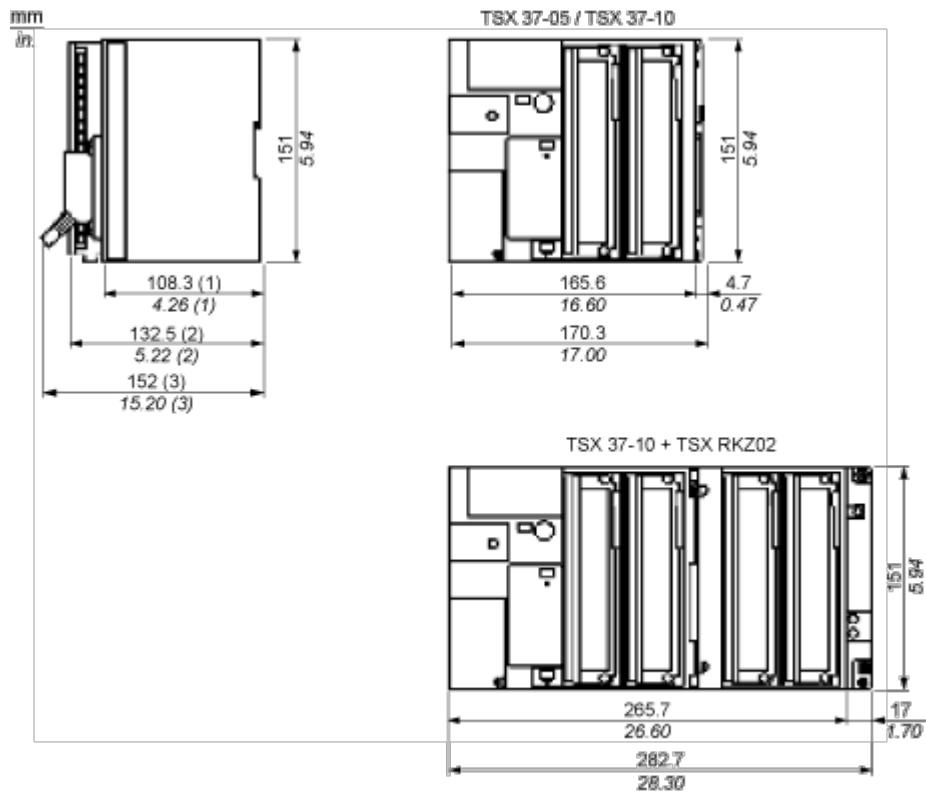
[Learn more about Green Premium >](#)

[Guide to assess a product's sustainability >](#)

Eu Rohs Directive	Not applicable, out of EU RoHS legal scope
China Rohs Regulation	China RoHS declaration
Weee	The product must be disposed on European Union markets following specific waste collection and never end up in rubbish bins

Dimensions Drawings

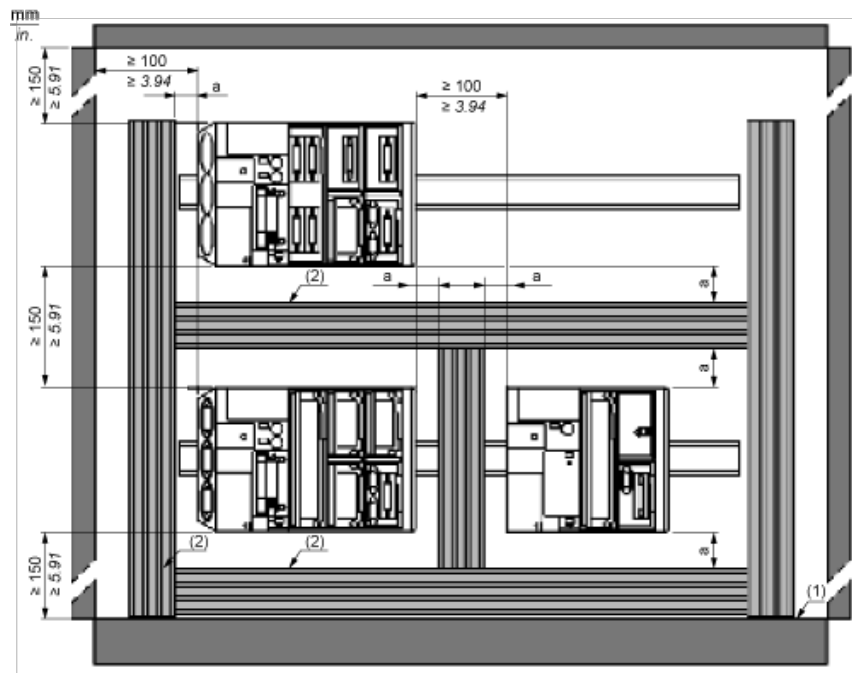
Dimensions



- (1) PLC empty.
- (2) With screw terminal block.
- (3) With HE10 or SubD connector.

Mounting and Clearance

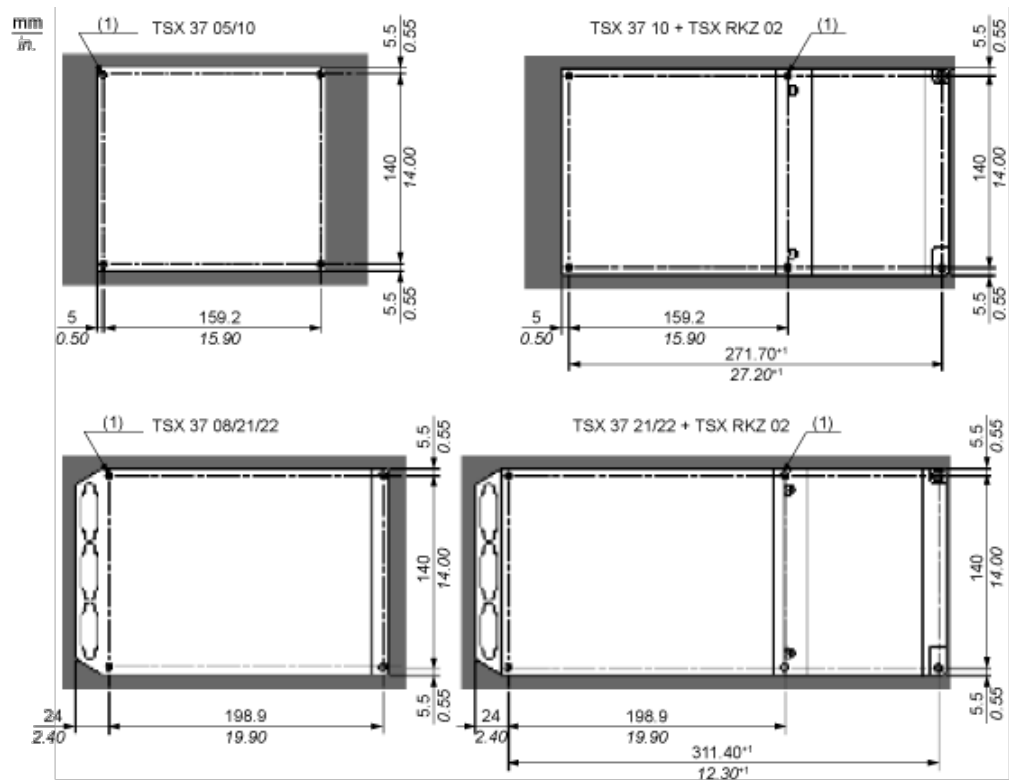
Spacing Requirements



a 50 mm/1.97 in. minimum

- (1) Installation or casing
- (2) Trough or cable tray

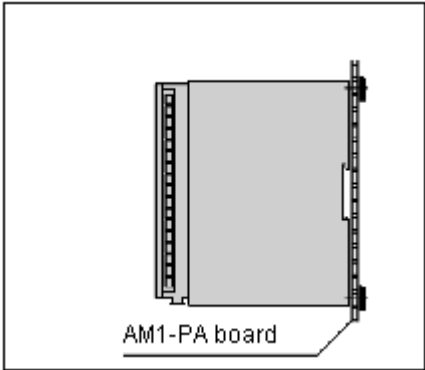
Panel/Board Mounting



(1) The diameter of the fixing holes must be sufficient to take M4 screws.

Telequick Board Mounting

Side View



Use 4 screws with M4x16AF1-VA416 captive washers and 4 M4 AF1-EA4 clip nuts.