

# Product data sheet

Specifications



## standard digital output kit - Modicon STB - 115..230 V AC - 2 O

STBDAO8210K

### Main

Range Of Product	Modicon STB distributed I/O solution
Product Or Component Type	Standard digital output kit
Kit Composition	STBXTS1100, 5-terminal screw type connector STBDAO8210 module STBXTS2110, 5-terminal spring clamp connector STBXBA2000 base
Discrete Output Number	2
Discrete Output Type	Triac
Discrete Output Voltage	115...230 V
Discrete Output Voltage Type	AC

### Complementary

Discrete Output Current	1000 mA 60 °C 2000 mA 30 °C
Discrete Output Logic	Positive or negative
Output Voltage	20...265 V AC
Absolute Maximum Voltage	300 V 10 s 400 V 20 ms
Response Time	10 ms off-to-on 10.5 ms on-to-off
Cold Swapping	Yes
Hot Swapping	Yes for standard NIMs
Fallback	State 0 basic NIMs User configurable standard NIMs
Protection Type	Output surge protection varistance and RC circuit
Insulation Between Channels And Logic Bus	1780 V for 1 minute
Maximum Leakage Current	2 mA at state 0 115 V 2.5 mA at state 0 230 V
Surge Current	20 A 40 ms 30 A 20 ms
Minimum Load	5 mA
Reset	Manual or automatic reset COM fault
Product Compatibility	I/O base STBXBA2000 Power distribution module STBPDT2100/2105
Supply	Power distribution module
Current Consumption	45 mA at 5 V DC for logic bus

Disclaimer: This documentation is not intended as a substitute for and is not to be used for determining suitability or reliability of these products for specific user applications

Marking	CE
Overvoltage Category	II
Status Led	1 LED (green) module status (RDY) 1 LED per channel (green) channel status (OUT1 to OUT2) 1 LED (red) module error (ERR)
Height	18.4 mm
Depth	70 mm
Width	128.3 mm
Net Weight	0.125 kg

## Environment

Standards	IEC 61131-2
Product Certifications	UL CSA FM Class 1 Division 2
Pollution Degree	2 conforming to IEC 60664-1
Operating Altitude	<= 2000 m
Ip Degree Of Protection	IP20 conforming to IEC 61131-2 class 1
Ambient Air Temperature For Operation	0...60 °C (without derating)
Ambient Air Temperature For Operation	32...140 °F without derating
Ambient Air Temperature For Storage	-40...85 °C without derating
Ambient Air Temperature For Storage	-40...185 °F without derating
Relative Humidity	95 % at 60 °C without condensation
Vibration Resistance	3 gn at 58...150 Hz on 35 x 7.5 mm symmetrical DIN rail 5 gn at 58...150 Hz on 35 x 15 mm symmetrical DIN rail +/-0.35 mm at 10...58 Hz
Shock Resistance	30 gn for 11 ms conforming to IEC 88 reference 2-27

## Packing Units

Unit Type Of Package 1	PCE
Number Of Units In Package 1	1
Package 1 Height	2.7 cm
Package 1 Width	8.0 cm
Package 1 Length	13.0 cm
Package 1 Weight	142.0 g
Unit Type Of Package 2	S02
Number Of Units In Package 2	28
Package 2 Height	15.0 cm
Package 2 Width	30.0 cm
Package 2 Length	40.0 cm
Package 2 Weight	3.976 kg
Unit Type Of Package 3	PAL
Number Of Units In Package 3	448

Package 3 Height	60.0 cm
Package 3 Width	80.0 cm
Package 3 Length	448.0 cm
Package 3 Weight	63.616 kg

## Contractual warranty

Warranty	18 months
----------	-----------

## Sustainability

**Green Premium™ label** is Schneider Electric's commitment to delivering products with best-in-class environmental performance. Green Premium promises compliance with the latest regulations, transparency on environmental impacts, as well as circular and low-CO<sub>2</sub> products.

**Guide to assessing product sustainability** is a white paper that clarifies global eco-label standards and how to interpret environmental declarations.

[Learn more about Green Premium >](#)

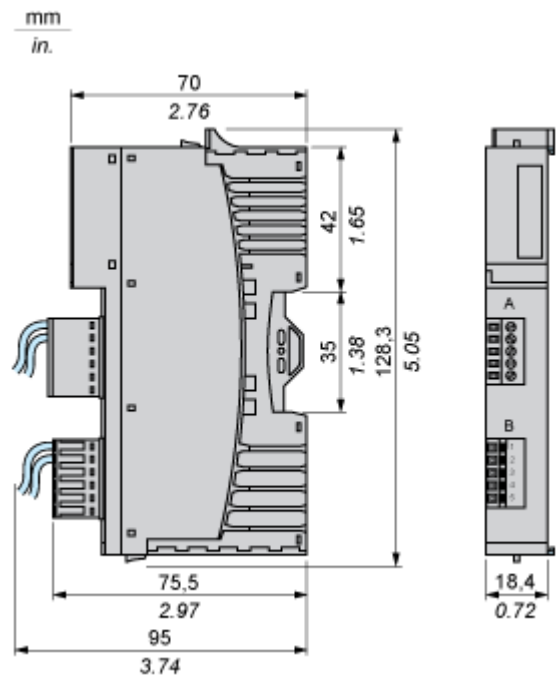
[Guide to assess a product's sustainability >](#)

## Well-being performance

 Mercury Free	
 Rohs Exemption Information	<a href="#">Yes</a>
Reach Regulation	<a href="#">REACH Declaration</a>
Eu Rohs Directive	Pro-active compliance (Product out of EU RoHS legal scope)
China Rohs Regulation	<a href="#">China RoHS declaration</a>
Weee	The product must be disposed on European Union markets following specific waste collection and never end up in rubbish bins

Dimensions Drawings

Dimensions

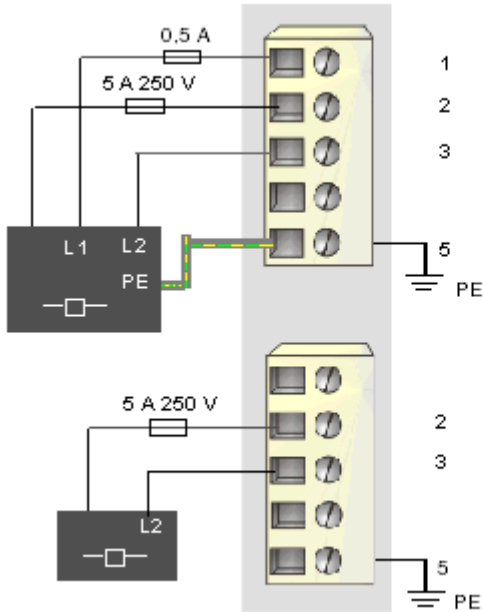


Connections and Schema

Wiring Diagram

Example

1 three-wire actuator and 1 two-wire actuator



Pin	Top Connector	Bottom Connector
1	actuator bus power (L1)	actuator bus power (L1)
2	output to actuator 1 (common with L1)	output to actuator 2 (common with L1)
3	field power neutral or L2	field power neutral or L2
4	field power neutral or L2	field power neutral or L2
5	protective earth	protective earth