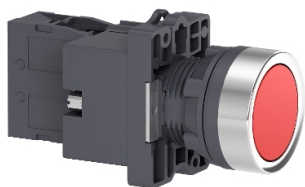


# Product datasheet

Specifications



Complete illuminated push button,  
Easy Harmony XA2, plastic, flush,  
red, 22mm, spring return, 220V AC,  
1NC

XA2EW34M2

## Main

Range Of Product	Easy Harmony XA2
Product Or Component Type	Complete illuminated push-button
Device Short Name	XA2
Bezel Material	Plastic
Mounting Diameter	22.5 mm

## Complementary

Sale Per Indivisible Quantity	1
Protective Treatment	TC
Operating Position	Any position
Fixing Center	>= 30 x 40 mm (panel) - thickness: 1...5 mm
Fixing Mode	Fixing nut recommended torque: 2.2 N.m (Us +/- 10 %)
Shape Of Signaling Unit Head	Round
Type Of Operator	spring return
Operator Profile	Red flush
Contacts Type And Composition	1 NC
Contact Operation	Slow-break
Mechanical Durability	1500000 cycles
Connections - Terminals	Screw clamp terminals, clamping capacity: 2 x 1.5 mm <sup>2</sup> Screw clamp terminals, clamping capacity: 1 x 2.5 mm <sup>2</sup> Faston terminals, connection size: 6.3 mm Screw clamp terminals, clamping capacity: 1 x 0.5 mm <sup>2</sup>
Tightening Torque	0.8 N.m
Short-Circuit Protection	10 A gL fuse conforming to IEC 60269-1
[Ith] Conventional Free Air Thermal Current	10 A
[Ui] Rated Insulation Voltage	600 V conforming to IEC 60947-4-1
[Uimp] Rated Impulse Withstand Voltage	6 kV conforming to IEC 60947-1
[Ie] Rated Operational Current	3 A at 240 V, AC-15, A600 conforming to IEC 60947-5-1 0.27 A at 250 V, DC-13, Q600 conforming to IEC 60947-5-1
Electrical Durability	500000 cycles, AC-15, 3 A at 230 V, operating rate <60 cyc/mn, load factor: 0.5 conforming to IEC 60947-5-1 500000 cycles, DC-13, 0.2 A at 110 V, operating rate <60 cyc/mn, load factor: 0.5
Signalling Type	Steady
Light Source	LED

Disclaimer: This documentation is not intended as a substitute for and is not to be used for determining suitability or reliability of these products for specific user applications

Bulb Base	BA 9s
[Us] Rated Supply Voltage	220 V AC 50/60 Hz
Supply Voltage Limits	0.8...1.1 V AC
Current Consumption	< 20 mA
Service Life	10000 h
Width	30 mm
Height	42 mm
Depth	79.5 mm
Net Weight	0.064 kg
Cap/Operator Or Lens Colour	Red
Type Of Operator	Spring return
[Us] Rated Supply Voltage	220...230 V

## Environment

Ambient Air Temperature For Storage	-40...70 °C
Ambient Air Temperature For Operation	-25...55 °C
Overvoltage Category	Class I conforming to IEC 536
Ip Degree Of Protection	IP65
Ik Degree Of Protection	IK03 conforming to IEC 60529
Standards	IEC 60947-5-1 GB 14048.1 IEC 60947-1 GB 14048.5
Product Certifications	CE CCC
Marking	CCC
Vibration Resistance	10 gn (f= 40...500 Hz) conforming to IEC 60068-2-6
Shock Resistance	70 gn (duration = 11 ms) for half sine wave acceleration conforming to IEC 60068-2-27

## Packing Units

Unit Type Of Package 1	PCE
Number Of Units In Package 1	1
Package 1 Height	4.5 cm
Package 1 Width	6.5 cm
Package 1 Length	7 cm
Package 1 Weight	62 g
Unit Type Of Package 2	S02
Number Of Units In Package 2	70
Package 2 Height	15 cm
Package 2 Width	30 cm
Package 2 Length	40 cm
Package 2 Weight	4.6 kg

Unit Type Of Package 3	P06
Number Of Units In Package 3	1120
Package 3 Height	75 cm
Package 3 Width	80 cm
Package 3 Length	60 cm
Package 3 Weight	81.6 kg

# Sustainability




**Green Premium™ label** is Schneider Electric’s commitment to delivering products with best-in-class environmental performance. Green Premium promises compliance with the latest regulations, transparency on environmental impacts, as well as circular and low-CO<sub>2</sub> products.

**Guide to assessing product sustainability** is a white paper that clarifies global eco-label standards and how to interpret environmental declarations.

[Learn more about Green Premium >](#)

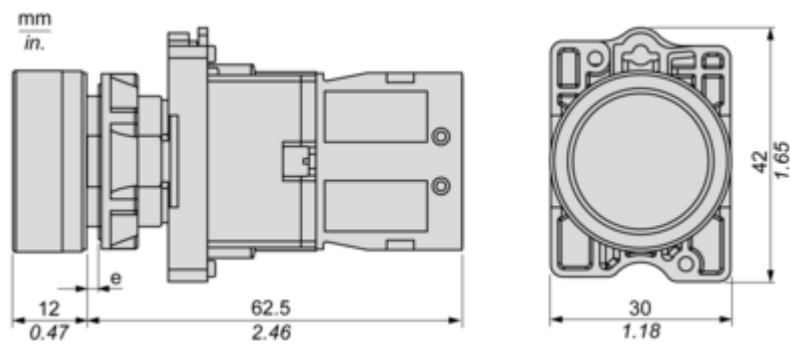
[Guide to assess a product’s sustainability >](#)

## Well-being performance

 Reach Free Of Svhc	
 Mercury Free	
 Rohs Exemption Information	Yes
Reach Regulation	<a href="#">REACH Declaration</a>
Eu Rohs Directive	Pro-active compliance (Product out of EU RoHS legal scope) <a href="#">EU RoHS Declaration</a>
China Rohs Regulation	<a href="#">China RoHS declaration</a>
Weee	The product must be disposed on European Union markets following specific waste collection and never end up in rubbish bins

Dimensions Drawings

Dimensions



(e) Clamping thickness: 1 to 6 mm / 0.04 to 0.24 in.

Mounting and Clearance

Panel Cut-out for Pushbuttons, Switches and Pilot Lights (Finished Holes, Ready for Installation)

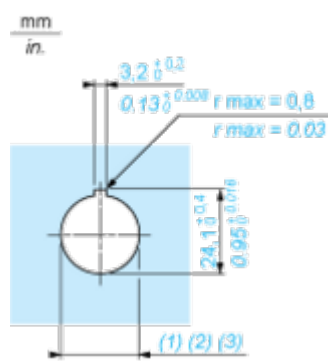
Connection by Screw Clamp Terminals



- (1) Diameter on finished panel or support
- (2) For selector switches and Emergency stop buttons, use of an anti-rotation plate type ZB5AZ902 is recommended.
- (3) Ø22.5 mm recommended (Ø22.3 <sup>+0.4</sup><sub>0</sub>) / Ø0.89 in. recommended (Ø0.88 in. <sup>+0.016</sup><sub>0</sub>)

Connections	a in mm	a in in.	b in mm	b in in.
By screw clamp terminals connector	40	1.57	30	1.18
By Faston connectors	45	1.77	32	1.26

Detail of Lug Recess



- (1) Diameter on finished panel or support
- (2) For selector switches and Emergency stop buttons, use of an anti-rotation plate type ZB5AZ902 is recommended.
- (3) Ø22.5 mm recommended (Ø22.3 <sup>+0.4</sup><sub>0</sub>) / Ø0.89 in. recommended (Ø0.88 in. <sup>+0.016</sup><sub>0</sub>)