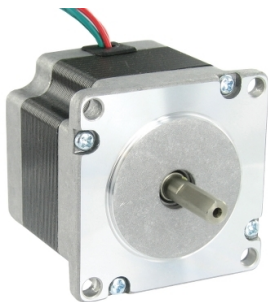


# Product datasheet

Specifications



2-phase stepper motor - 1.69 N.m -  
shaft Ø6.35 mm - L=76mm - without  
brake - 3A

BRS2573A300

EAN Code: 3606480211133

⚠ To be discontinued

## Main

Range Compatibility	Lexium SD2
Product Or Component Type	Motion control motor
Device Short Name	BRS2
Motor Type	2-phase stepper motor

## Complementary

Maximum Mechanical Speed	1800 rpm
Supply Voltage Limits	12...48 V DC
Mounting Support	Flange
Motor Flange Size	56.4 mm
Length	76 mm
Number Of Motor Stacks	3
Centring Collar Diameter	38 mm
Centring Collar Depth	1.6 mm
Number Of Mounting Holes	4
Mounting Holes Diameter	5 mm
Circle Diameter Of The Mounting Holes	66.6 mm
Electrical Connection	Flying lead
Holding Brake	Without
Shaft End	Smooth shaft
Second Shaft	Without second shaft end
Shaft Diameter	6.35 mm
Shaft Length	19 mm
Holding Torque	1.69 N.m
Rotor Inertia	0.46 kg.cm²
Resolution	200 steps number of full steps per revolution 1.8 ° step angle
[In] Rated Current	3 A
Resistance	0.95 Ohm (winding)

## Environment

Disclaimer: This documentation is not intended as a substitute for and is not to be used for determining suitability or reliability of these products for specific user applications

Ambient Air Temperature For Operation	-25...40 °C
Ambient Air Temperature For Storage	-25...70 °C
Operating Altitude	<= 1000 m without power derating
Relative Humidity	15...85 % without condensation
Ip Degree Of Protection	IP20 conforming to IEC/EN 60034-1
Temperature Class	B winding conforming to IEC/EN 60034-1

## Packing Units

Unit Type Of Package 1	PCE
Number Of Units In Package 1	1
Package 1 Height	20.0 cm
Package 1 Width	29.2 cm
Package 1 Length	38.4 cm
Package 1 Weight	1.109 kg
Unit Type Of Package 2	CAR
Number Of Units In Package 2	10
Package 2 Height	20.0 cm
Package 2 Width	29.2 cm
Package 2 Length	38.4 cm
Package 2 Weight	11.098 kg
Unit Type Of Package 3	S06
Number Of Units In Package 3	40
Package 3 Height	73.5 cm
Package 3 Width	60.0 cm
Package 3 Length	80.0 cm
Package 3 Weight	57.392 kg

## Contractual warranty

Warranty	18 months
----------	-----------

## Sustainability





**Green Premium™ label** is Schneider Electric's commitment to delivering products with best-in-class environmental performance. Green Premium promises compliance with the latest regulations, transparency on environmental impacts, as well as circular and low-CO<sub>2</sub> products.

**Guide to assessing product sustainability** is a white paper that clarifies global eco-label standards and how to interpret environmental declarations.

[Learn more about Green Premium >](#)

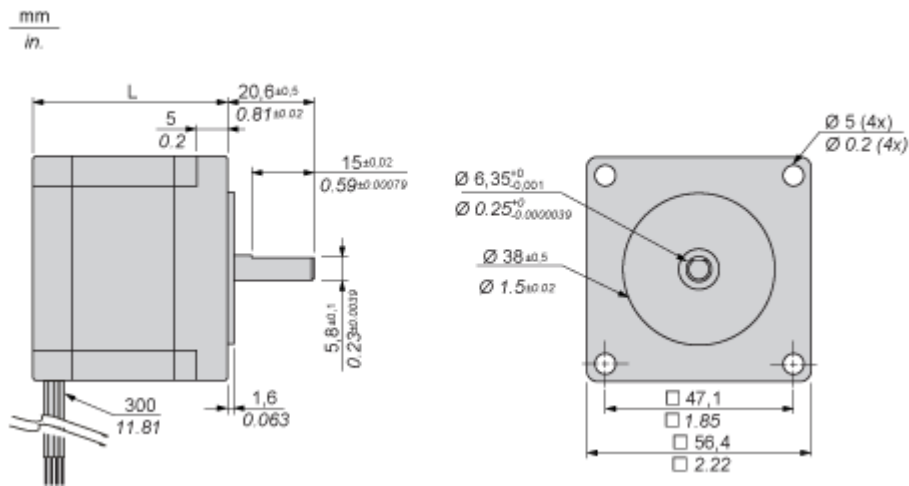
[Guide to assess a product's sustainability >](#)

## Well-being performance

 Reach Free Of Svhc	
 Mercury Free	
 Rohs Exemption Information	<a href="#">Yes</a>
 Pvc Free	
<b>Reach Regulation</b>	<a href="#">REACH Declaration</a>
<b>Eu Rohs Directive</b>	Pro-active compliance (Product out of EU RoHS legal scope)
<b>China Rohs Regulation</b>	<a href="#">China RoHS declaration</a>
<b>Weee</b>	The product must be disposed on European Union markets following specific waste collection and never end up in rubbish bins

Dimensions Drawings

Dimensions



Dimensions in mm

L
76

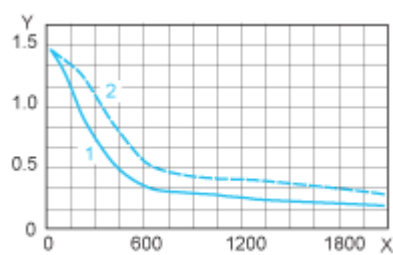
Dimensions in in.

L
2.99

Performance Curves

Torque Characteristics

---



X : Speed of rotation in rpm

Y : Torque in Nm

1 : 24 VDC

2 : 48 VDC