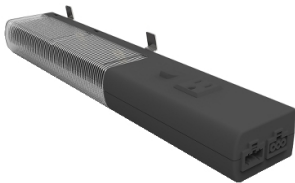


Product datasheet

Specifications



Multi-fixing LED lamp with socket USA - 120 V AC - 10W

NSYLAMLDU

EAN Code: 3606481203076

Main

Range Of Product	Lighting and power sockets
Accessory / Separate Part Category	Lighting accessory
Product Or Component Type	Lamp
Device Application	Multi-purpose
Device Composition	1 lamp 1 fixing elements
Power Factor	0.9

Complementary

Outlet Standard	United States
Rated Lamp Wattage	10 W
[Ue] Rated Operational Voltage	120 V AC 50/60 Hz
Bulb Base	Integral LED
Bulb Type	LED
Control Type	Built-it switch
Luminous Flux	950 lm
Colour Temperature	4000 K
Service Life In Hours	25000 h
Electrical Connection	Cable quick connector 3 m not supplied Cable quick connector 1 m not supplied
Mounting Support	Bracket DIN rail Metal parts
Fixing Mode	Clip-in Magnetic fixing Screws
Range Compatibility	Spacial Thalassa
Material	PC (UL94 V-0)
Length	372 mm
Height	63 mm
Width	40 mm
Colour	Black (RAL 9005)

Environment

Disclaimer: This documentation is not intended as a substitute for and is not to be used for determining suitability or reliability of these products for specific user applications

Ip Degree Of Protection	IP20 conforming to IEC 60529
Electrical Insulation Class	Class I
Electromagnetic Compatibility	EMC immunity conforming to EN 55015
Standards	UL 1598 IEC 60598 EN 55015 CSA C22.2 No 14-10 UL 94 UL 8750 UL 508 A
Ambient Air Temperature For Operation	-16...65 °C
Ambient Air Temperature For Storage	-10...60 °C

Packing Units

Unit Type Of Package 1	PCE
Number Of Units In Package 1	1
Package 1 Height	5.5 cm
Package 1 Width	8.2 cm
Package 1 Length	40.0 cm
Package 1 Weight	845.0 g

Contractual warranty

Warranty	18 months
----------	-----------

Sustainability



Green Premium™ label is Schneider Electric’s commitment to delivering products with best-in-class environmental performance. Green Premium promises compliance with the latest regulations, transparency on environmental impacts, as well as circular and low-CO₂ products.

Guide to assessing product sustainability is a white paper that clarifies global eco-label standards and how to interpret environmental declarations.

[Learn more about Green Premium >](#)

[Guide to assess a product’s sustainability >](#)



Transparency RoHS/REACH

Well-being performance

✓	Reach Free Of Svhc	
✓	Toxic Heavy Metal Free	
✓	Mercury Free	
✓	Rohs Exemption Information	Yes

Certifications & Standards

Reach Regulation	REACH Declaration
Eu Rohs Directive	Compliant EU RoHS Declaration
China Rohs Regulation	China RoHS declaration Pro-active China RoHS declaration (out of China RoHS legal scope)
Environmental Disclosure	Product Environmental Profile
Weee	The product must be disposed on European Union markets following specific waste collection and never end up in rubbish bins
Circularity Profile	End of Life Information