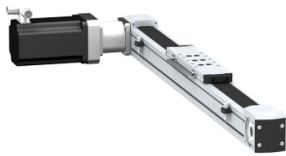


# Product datasheet

Specifications



portal axis PAS E - profile size  
40x40mm - toothed belt - roller -  
stroke 350mm

PAS41E0350

⚠ Discontinued on: 3 Feb 2022

⚠ To be end-of-service on: 31 Dec 2026

⚠ Discontinued

EAN Code: 3606485236131

## Main

Range Of Product	Lexium PAS E
Product Or Component Type	Portal axis
Product Specific Application	For 1 direction
Load Position	On carriage
Drive Type	Toothed belt
Type Of Guide	Roller

## Complementary

Operating Position	Horizontal
Typical Payload	4 kg
Distance Per Revolution	84 mm
Operating Force	300 N for Fx 660 N for Fy 430 N for Fz
Maximum Speed	2 m/s
Maximum Acceleration	15 m/s <sup>2</sup>
Max. Drive Torque	4 N.m
Max. Torque	<5 N.m for Mx <11 N.m for My <17 N.m for Mz
Stroke	350 mm
Product Weight	3.6 kg at 0 stroke with carriage and motor 0.5 kg of carriage 5.9 kg total
Repeat Accuracy	+/- 0.05 mm
Profile Dimension	40 x 40 mm
Service Life	30000 km
Associated Module	PLE40 planetary gearbox, reduction ratio: 3:1 (supplied) BSH0552P01A2A servo motor (supplied) LXM32.U60N4 servo drive (not supplied)

## Packing Units

Unit Type Of Package 1	PCE
------------------------	-----

Disclaimer: This documentation is not intended as a substitute for and is not to be used for determining suitability or reliability of these products for specific user applications

Number Of Units In Package 1	1
Package 1 Height	16.5 cm
Package 1 Width	48.8 cm
Package 1 Length	79.7 cm
Package 1 Weight	5.902 kg

## Contractual warranty

Warranty	18 months
----------	-----------

## Sustainability





**Green Premium™ label** is Schneider Electric's commitment to delivering products with best-in-class environmental performance. Green Premium promises compliance with the latest regulations, transparency on environmental impacts, as well as circular and low-CO<sub>2</sub> products.

**Guide to assessing product sustainability** is a white paper that clarifies global eco-label standards and how to interpret environmental declarations.

[Learn more about Green Premium >](#)

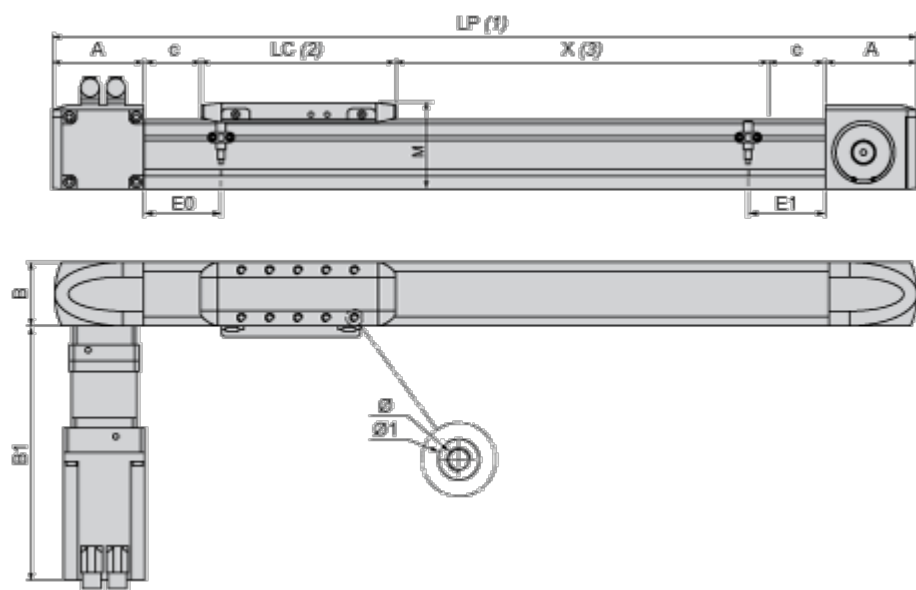
[Guide to assess a product's sustainability >](#)

## Well-being performance

 Reach Free Of Svhc	
 Mercury Free	
 Rohs Exemption Information	<a href="#">Yes</a>
 Pvc Free	
<b>Reach Regulation</b>	<a href="#">REACH Declaration</a>
<b>Eu Rohs Directive</b>	Pro-active compliance (Product out of EU RoHS legal scope)
<b>China Rohs Regulation</b>	<a href="#">China RoHS declaration</a>
<b>Weee</b>	The product must be disposed on European Union markets following specific waste collection and never end up in rubbish bins

Dimensions Drawings

Size Characteristics



- (1) LP : total length of axis
- (2) LC : length of carriage
- (3) X : Stroke, refer to product characteristics.

A	mm	53.5
	in.	2.11
B	mm	40
	in.	1.57
B1	mm	258
	in.	10.16
c	mm	10
	in.	0.39
E0	mm	25
	in.	0.98
E1	mm	25
	in.	0.98
LC	mm	200
	in.	7.87

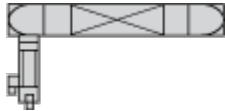
LP	mm	= 127 + LC + X
	in.	= 5.00 + LC + X
M	mm	55
	in.	2.16
Ø	mm	M5 X 12
	in.	M5 X 0.47
Ø1	mm	g <sup>H7</sup> X 2.1
	in.	g <sup>H7</sup> X 0.08

Mounting and Clearance

Servo Motor Mounting

---

Standard servo motor mounting

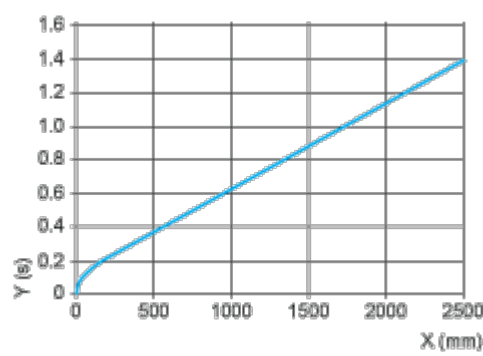


Servo motor mounted on the left



Performance Curves

Axis Positioning Time as a Function of the Stroke



X : Stroke

Y : Positioning time

Technical Description

Forces and Torques Exerted on the Lexium PAS E Portal Axis

---

