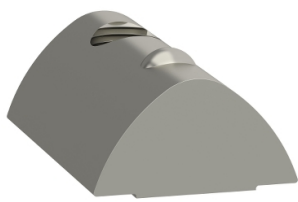


Product datasheet

Specifications



slot nuts, slot size 8, M6 - 10 pieces

VW33MF010T8N6

⚠ Discontinued on: 9 Feb 2023

EAN Code: 3606485219967

⚠ Discontinued

Main

Range Of Product	Lexium linear motion
Product Or Component Type	T-slot nut
Product Specific Application	To mount the axis on fixed support
Accessory / Separate Part Category	Maintenance accessories
Screw Type	M6

Complementary

Product Compatibility	PAS 44 linear axis, outer dimension : 110 x 110 mm TAS 42 linear axis, outer dimension : 150 x 54 mm TAS 43 linear axis, outer dimension : 200 x 59 mm CAS 44 linear axis, outer dimension : 110 x 110 mm
Range Compatibility	Lexium CAS Lexium PAS Lexium TAS
Width	8 mm

Packing Units

Unit Type Of Package 1	PCE
Number Of Units In Package 1	1
Package 1 Height	6.5 cm
Package 1 Width	13.0 cm
Package 1 Length	19.0 cm
Package 1 Weight	182.0 g
Unit Type Of Package 2	S04
Number Of Units In Package 2	36
Package 2 Height	30.0 cm
Package 2 Width	40.0 cm
Package 2 Length	60.0 cm
Package 2 Weight	7.804 kg

Contractual warranty

Warranty	18 months
----------	-----------

Disclaimer: This documentation is not intended as a substitute for and is not to be used for determining suitability or reliability of these products for specific user applications

Sustainability

Green Premium™ label is Schneider Electric’s commitment to delivering products with best-in-class environmental performance. Green Premium promises compliance with the latest regulations, transparency on environmental impacts, as well as circular and low-CO₂ products.

Guide to assessing product sustainability is a white paper that clarifies global eco-label standards and how to interpret environmental declarations.

[Learn more about Green Premium >](#)

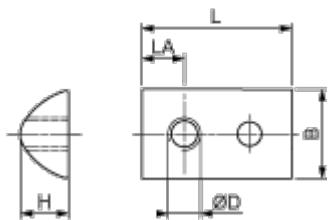
[Guide to assess a product’s sustainability >](#)

Well-being performance

✓	Reach Free Of Svhc	
✓	Toxic Heavy Metal Free	
✓	Mercury Free	
✓	Rohs Exemption Information	Yes
✓	Pvc Free	
Reach Regulation	REACH Declaration	
Eu Rohs Directive	Pro-active compliance (Product out of EU RoHS legal scope)	
	EU RoHS Declaration	
China Rohs Regulation	China RoHS declaration	

Dimensions Drawings

Dimensions



Dimensions in mm

B	H	L	LA	ØD
13.8	7.3	23	6.5	M6

Dimensions in in.

B	H	L	LA	ØD
0.54	0.29	0.90	0.25	M6