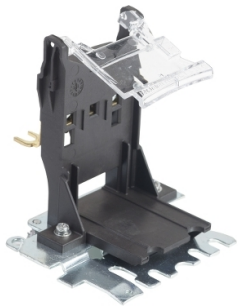


Product data sheet

Specifications

SQUARE D



Bimetal Overload Relay Overload Relay Adapter 3 Phase Replacement

9065SADR75

! Discontinued on: Jun 30, 2020

! Discontinued

Product availability: Non-Stock - Not normally stocked in distribution facility

Main

Range Of Product	Accessory
Product Destination	Overload relay
Thermal Overload Type	Ambient compensated bimetallic

Complementary

Phase	3 phase
[Ue] Rated Operational Voltage	600 V AC

Ordering and shipping details

Category	US10CP121661
Discount Schedule	0CP1
Gtin	785901474326
Returnability	No
Country Of Origin	MX

Packing Units

Unit Type Of Package 1	PCE
Number Of Units In Package 1	1
Package 1 Height	4.60 in (11.684 cm)
Package 1 Width	5.30 in (13.462 cm)
Package 1 Length	5.50 in (13.97 cm)
Package 1 Weight	8.16 oz (231.332 g)

Price is "List Price" and may be subject to a trade discount – check with your local distributor or retailer for actual price.

Disclaimer: This documentation is not intended as a substitute for and is not to be used for determining suitability or reliability of these products for specific user applications

Sustainability

Green Premium™ label is Schneider Electric’s commitment to delivering products with best-in-class environmental performance. Green Premium promises compliance with the latest regulations, transparency on environmental impacts, as well as circular and low-CO₂ products.

Guide to assessing product sustainability is a white paper that clarifies global eco-label standards and how to interpret environmental declarations.

[Learn more about Green Premium >](#)

[Guide to assess a product’s sustainability >](#)

Eu Rohs Directive	Pro-active compliance (Product out of EU RoHS legal scope) EU RoHS Declaration
California Proposition 65	WARNING: This product can expose you to chemicals including: Lead and lead compounds which is known to the State of California to cause Carcinogen & Reproductive harm. For more information go to www.p65warnings.ca.gov