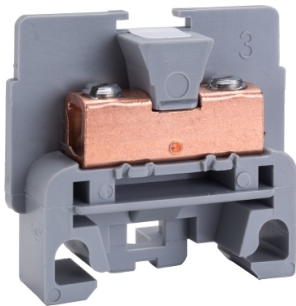


Product data sheet

Specifications

SQUARE D



Terminal block, Linergy, box connector, grey colored block, 40A, 600 V

9080GKE6

Discontinued on: Nov 11, 2020

End-of-service on: Dec 31, 2020

Discontinued

Main

Range Of Product	9080G
Product Type	Terminal block
Localisation On Device	Standard
Color	Gray
Quantity	Set of 50

Complementary

Voltage Rating	600 V AC/DC
Current Rating	40 A CSA 70 A UL
Wire Size	AWG 22...AWG 10 copper
Mounting Type	Panel 9080GH track
Certifications	CSA file 62144 class 6228 01 UL recognized E60616 CCN XCFR2 CE
Electrical Connection	Copper box lugs
Material	Nylon: block
Ambient Air Temperature For Operation	-40...257 °F (-40...125 °C)
Electrical Connrection Tightening Torque	Lug copper 11...12 lbf.in (1.24...1.36 N.m) : AWG 22...AWG 10 copper)
Height	1.39 in (35.31 mm)
Width	1.4 in (35.56 mm)
Depth	0.35 in (8.89 mm)
Density	35 per foot
Compatible End Barrier	GK6B

Ordering and shipping details

Category	21702-9080 G (NOT GCB)
Discount Schedule	CP5
Gtin	00785901744535
Returnability	No
Country Of Origin	MX

Price is "List Price" and may be subject to a trade discount – check with your local distributor or retailer for actual price.

Contractual warranty

Warranty	18 months
----------	-----------

Sustainability

Green Premium™ label is Schneider Electric's commitment to delivering products with best-in-class environmental performance. Green Premium promises compliance with the latest regulations, transparency on environmental impacts, as well as circular and low-CO₂ products.

Guide to assessing product sustainability is a white paper that clarifies global eco-label standards and how to interpret environmental declarations.

[Learn more about Green Premium >](#)

[Guide to assess a product's sustainability >](#)

Well-being performance

✓	Reach Free Of Svhc	
✓	Toxic Heavy Metal Free	
✓	Mercury Free	
✓	Rohs Exemption Information	Yes
✓	Pvc Free	
Eu Rohs Directive		Compliant EU RoHS Declaration
China Rohs Regulation		China RoHS declaration Pro-active China RoHS declaration (out of China RoHS legal scope)
California Proposition 65		WARNING: This product can expose you to chemicals including: Lead and lead compounds, which is known to the State of California to cause cancer and birth defects or other reproductive harm. For more information go to www.P65Warnings.ca.gov