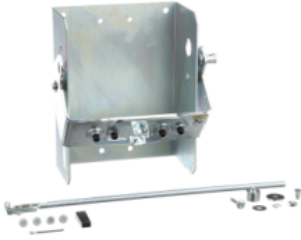


# Product data sheet

Specifications

**SQUARE** D



Disconnect mechanism, circuit breaker, variable depth, 600A, 3 pole, operator only, for PowerPacT D and L breakers

9422RS1

**Product availability : Stock - Normally stocked in distribution facility**

**Price\* : 711.69 USD**

## Main

Range	9422R
Product	Circuit Breaker Mechanism
Mounting Type	Flange rod variable depth
Certifications	CSA UL Recognized
Circuit Breaker Type	MG-NSJ 3 PowerPact D 3
Handle Type	Ordered separately

## Ordering and shipping details

Category	21732-9422
Discount Schedule	CP1
GTIN	785901551430
Nbr. of units in pkg.	1
Package weight(Lbs)	7.34 lb(US) (3.329 kg)
Returnability	Yes
Country of origin	MX

## Packing Units

Unit Type of Package 1	PCE
Package 1 Height	6.80 in (17.272 cm)
Package 1 width	12.30 in (31.242 cm)
Package 1 Length	13.30 in (33.782 cm)

## Offer Sustainability

California proposition 65	WARNING: This product can expose you to chemicals including: Lead and lead compounds, which is known to the State of California to cause cancer and birth defects or other reproductive harm. For more information go to <a href="http://www.P65Warnings.ca.gov">www.P65Warnings.ca.gov</a>
REACH Regulation	<a href="#">REACH Declaration</a>
EU RoHS Directive	Compliant <a href="#">EU RoHS Declaration</a>

\* Price is "List Price" and may be subject to a trade discount – check with your local distributor or retailer for actual price.

---

<b>Mercury free</b>	Yes
<b>RoHS exemption information</b>	<a href="#">Yes</a>
<b>China RoHS Regulation</b>	<a href="#">China RoHS declaration</a> Product out of China RoHS scope. Substance declaration for your information.

---

<b>PVC free</b>	Yes
-----------------	-----

## **Contractual warranty**

---

<b>Warranty</b>	18 months
-----------------	-----------