

Product data sheet

Specifications



synchronous motor - BMP - 480 VAC - 2.2 kW - IP65 - IEC

BMP1401F3NA2A

Product availability: Non-Stock - Not normally stocked in distribution facility

Price*: 1,825.20 USD

Main

| | |
|---------------------------|---|
| Product Or Component Type | Synchronous motor |
| Device Short Name | BMP |
| Maximum Mechanical Speed | 3600 rpm |
| Nominal Output Power | 1100 W ATV32 1.1 kW 200 V single phase 1100 W ATV32 1.5 kW 200 V single phase 2000 W ATV32 2.2 kW 400 V three phase 1100 W ATV320 1.1 kW 200 V single phase 1100 W ATV320 1.5 kW 200 V single phase 2000 W ATV320 2.2 kW 400 V three phase |
| Nominal Torque | 61.96 lbf.in (7 N.m) ATV32 1.1 kW 200 V single phase 61.96 lbf.in (7 N.m) ATV32 1.5 kW 200 V single phase 56.38 lbf.in (6.37 N.m) ATV32 2.2 kW 400 V three phase 61.96 lbf.in (7 N.m) ATV320 1.1 kW 200 V single phase 61.96 lbf.in (7 N.m) ATV320 1.5 kW 200 V single phase 56.38 lbf.in (6.37 N.m) ATV320 2.2 kW 400 V three phase |
| Nominal Speed | 1500 rpm ATV32 1.1 kW 200 V single phase 1500 rpm ATV32 1.5 kW 200 V single phase 3000 rpm ATV32 2.2 kW 400 V three phase 1500 rpm ATV320 1.1 kW 200 V single phase 1500 rpm ATV320 1.5 kW 200 V single phase 3000 rpm ATV320 2.2 kW 400 V three phase |
| Product Compatibility | Variable speed drive ATV32 1.1 kW 200 V single phase Variable speed drive ATV32 1.5 kW 200 V single phase Variable speed drive ATV32 2.2 kW 400 V three phase Variable speed drive ATV320 1.1 kW 200...240 V single phase Variable speed drive ATV320 1.5 kW 200...240 V single phase Variable speed drive ATV320 2.2 kW 380...500 V three phase |
| Shaft End | Keyed |
| Ip Degree Of Protection | IP65 standard IP67 with IP67 kit |
| Holding Brake | Without |
| Mounting Support | International standard flange |
| Electrical Connection | Rotatable right-angled connector |

Complementary

| | |
|---------------------------|--------------------------------------|
| Range Compatibility | Altivar 32 Altivar Machine ATV320 |
| [Us] Rated Supply Voltage | 480 V |
| Phase | Three phase |

Price is "List Price" and may be subject to a trade discount – check with your local distributor or retailer for actual price.

Disclaimer: This documentation is not intended as a substitute for and is not to be used for determining suitability or reliability of these products for specific user applications

| | |
|---------------------------------------|---|
| Maximum Current Irms | 10.4 A ATV32 1.1 kW 200 V single phase 12 A ATV32 1.5 kW 200 V single phase 8.3 A ATV32 2.2 kW 400 V three phase 10.4 A ATV320 1.1 kW 200 V single phase 12 A ATV320 1.5 kW 200 V single phase 8.3 A ATV320 2.2 kW 400 V three phase |
| Nominal Operating Frequency | 125 Hz ATV32 1.1 kW 200 V single phase 125 Hz ATV32 1.5 kW 200 V single phase 250 Hz ATV32 2.2 kW 400 V three phase 125 Hz ATV320 1.1 kW 200 V single phase 125 Hz ATV320 1.5 kW 200 V single phase 250 Hz ATV320 2.2 kW 400 V three phase |
| Minimum Operating Frequency | 13 Hz ATV32 1.1 kW 200 V single phase 13 Hz ATV32 1.5 kW 200 V single phase 25 Hz ATV32 2.2 kW 400 V three phase 13 Hz ATV320 1.1 kW 200 V single phase 13 Hz ATV320 1.5 kW 200 V single phase 25 Hz ATV320 2.2 kW 400 V three phase |
| Maximum Operating Frequency | 150 Hz ATV32 1.1 kW 200 V single phase 150 Hz ATV32 1.5 kW 200 V single phase 300 Hz ATV32 2.2 kW 400 V three phase 150 Hz ATV320 1.1 kW 200 V single phase 150 Hz ATV320 1.5 kW 200 V single phase 300 Hz ATV320 2.2 kW 400 V three phase |
| Shaft Diameter | 0.94 in (24 mm) |
| Shaft Length | 1.97 in (50 mm) |
| Key Width | 0.31 in (8 mm) |
| Motor Flange Size | 5.51 in (140 mm) |
| Torque Constant | 1.55 N.m/A 104 °F (40 °C) |
| Number Of Motor Poles | 5 |
| Number Of Motor Stacks | 1 |
| Rotor Inertia | 16.46 kg.cm² |
| Stator Resistance | 0.7 Ohm 104 °F (40 °C) |
| Stator Inductance | 6.23 mH for q-axis winding 104 °F (40 °C) 5.18 mH for d-axis winding 104 °F (40 °C) |
| Maximum Radial Force Fr | 1930 N 1000 rpm 1530 N 2000 rpm 1340 N 3000 rpm |
| Maximum Axial Force Fa | 0.2 x Fr |
| Type Of Cooling | Natural convection |
| Length | 5.98 in (152 mm) |
| Centring Collar Diameter | 5.12 in (130 mm) |
| Centring Collar Depth | 0.14 in (3.5 mm) |
| Number Of Mounting Holes | 4 |
| Mounting Holes Diameter | 0.43 in (11 mm) |
| Circle Diameter Of The Mounting Holes | 6.50 in (165 mm) |
| Net Weight | 17.64 lb(US) (8 kg) |

Ordering and shipping details

| | |
|-------------------|---------------|
| Category | US1PC5318282 |
| Discount Schedule | PC53 |
| Gtin | 3606480564475 |

| | |
|-------------------|----|
| Returnability | No |
| Country Of Origin | DE |

Packing Units

| | |
|------------------------------|---------------------------|
| Unit Type Of Package 1 | PCE |
| Number Of Units In Package 1 | 1 |
| Package 1 Height | 10.24 in (26.0 cm) |
| Package 1 Width | 7.87 in (20.0 cm) |
| Package 1 Length | 23.23 in (59.0 cm) |
| Package 1 Weight | 21.27 lb(US) (9.648 kg) |
| Unit Type Of Package 2 | P06 |
| Number Of Units In Package 2 | 4 |
| Package 2 Height | 30.31 in (77.0 cm) |
| Package 2 Width | 31.50 in (80.0 cm) |
| Package 2 Length | 23.62 in (60.0 cm) |
| Package 2 Weight | 103.82 lb(US) (47.092 kg) |

Contractual warranty

| | |
|----------|-----------|
| Warranty | 18 months |
|----------|-----------|

Sustainability




Green Premium™ label is Schneider Electric’s commitment to delivering products with best-in-class environmental performance. Green Premium promises compliance with the latest regulations, transparency on environmental impacts, as well as circular and low-CO₂ products.

Guide to assessing product sustainability is a white paper that clarifies global eco-label standards and how to interpret environmental declarations.

[Learn more about Green Premium >](#)

[Guide to assess a product’s sustainability >](#)

Well-being performance

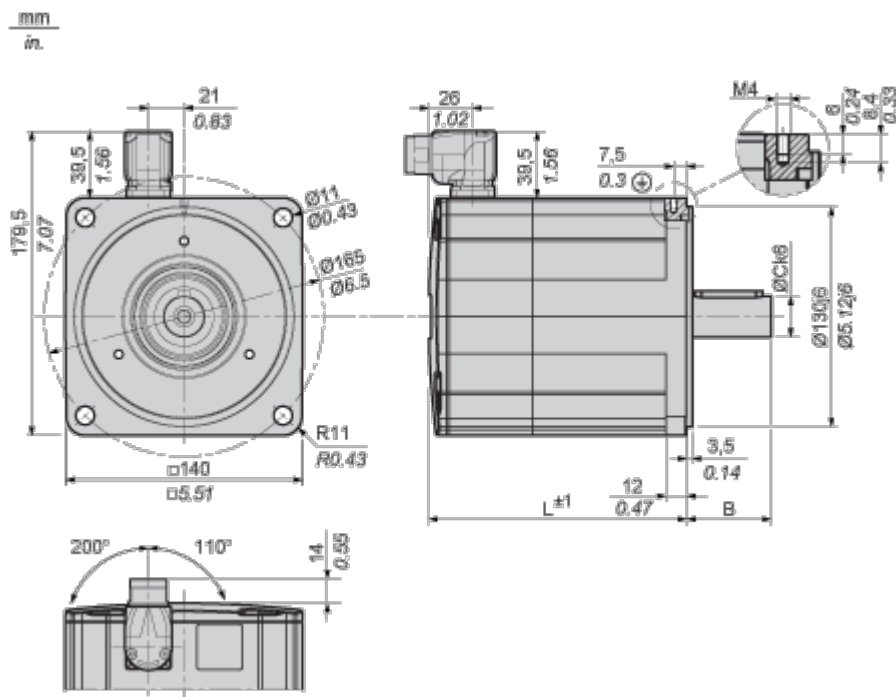
| | |
|--|---|
|  Mercury Free | |
|  Rohs Exemption Information | Yes |
|  Pvc Free | |
| Reach Regulation | REACH Declaration |
| Eu Rohs Directive | Pro-active compliance (Product out of EU RoHS legal scope) |
| China Rohs Regulation | China RoHS declaration |
| Weee | The product must be disposed on European Union markets following specific waste collection and never end up in rubbish bins. |
| California Proposition 65 | WARNING: This product can expose you to chemicals including: Lead and lead compounds, which is known to the State of California to cause cancer and birth defects or other reproductive harm. For more information go to www.P65Warnings.ca.gov |

Product data sheet

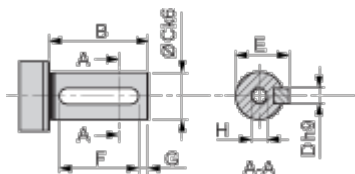
BMP1401F3NA2A

Dimensions Drawings

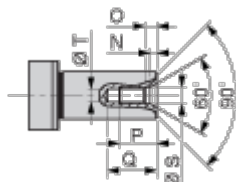
Dimensions



Parallel Key According to DIN 6885 A



Female Thread of Shaft According to DIN 332-D

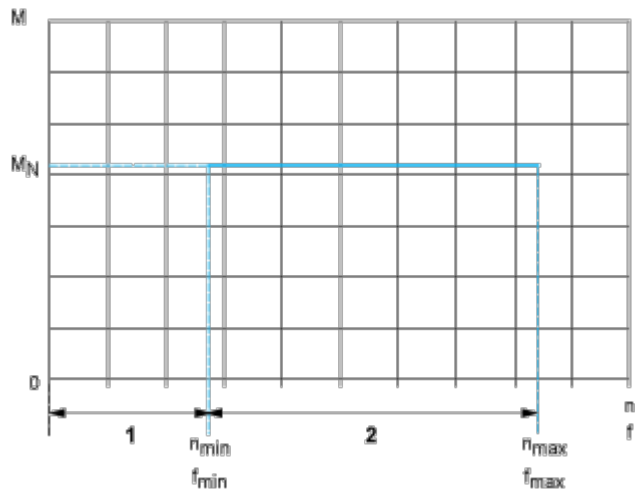


| | | |
|---|-----|------|
| L | mm | 152 |
| | in. | 5.98 |
| B | mm | 50 |
| | in. | 1.97 |
| C | mm | 24 |
| | in. | 0.94 |

| | | |
|---|-----|------|
| | in. | 0.94 |
| D | mm | 8 |
| | in. | 0.31 |
| E | mm | 27 |
| | in. | 1.06 |
| F | mm | 40 |
| | in. | 1.57 |
| G | mm | 5 |
| | in. | 0.20 |
| H | | M8 |
| N | mm | 3.3 |
| | in. | 0.13 |
| O | mm | 6 |
| | in. | 0.24 |
| P | mm | 19 |
| | in. | 0.75 |
| Q | mm | 25 |
| | in. | 0.98 |
| S | mm | 8.4 |
| | in. | 0.33 |
| T | mm | 6.8 |
| | in. | 0.27 |

Performance Curves

Performance curves



- M : Torque in Nm
- n : Speed in rpm
- f : frequency in Hz
- 1 : Only permissible during acceleration and deceleration phases.
- 2 : Continuous operation with the default values from the configuration file.