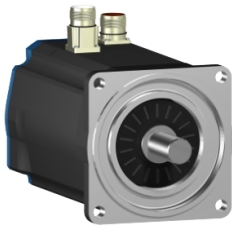


Product data sheet

Specifications



servo motor BSH, Lexium 32,
32.1N.m, 3000rpm, 140mm,
untapped shaft, Sincos single turn,
with brake, IP50, straight

BSH1404P01F1P

Product availability: Non-Stock - Not normally stocked in distribution facility

Price*: 3,345.00 USD

Main

| | |
|---------------------------|---|
| Product Or Component Type | Servo motor |
| Device Short Name | BSH |
| Maximum Mechanical Speed | 4000 rpm |
| Continuous Stall Torque | 295.61 lbf.in (33.4 N.m) LXM32.D72N4 24 A, 400 V, three phase 295.61 lbf.in (33.4 N.m) LXM32.D72N4 24 A, 480 V, three phase 284.11 lbf.in (32.1 N.m) LXM05AD57N4, 380...480 V, three phase 284.11 lbf.in (32.1 N.m) LXM05BD57N4, 380...480 V, three phase 284.11 lbf.in (32.1 N.m) LXM05CD57N4, 380...480 V, three phase |
| Peak Stall Torque | 916.94 lbf.in (103.6 N.m) LXM32.D72N4 24 A, 400 V, three phase 916.94 lbf.in (103.6 N.m) LXM32.D72N4 24 A, 480 V, three phase 558.39 lbf.in (63.09 N.m) LXM05AD57N4, 380...480 V, three phase 558.39 lbf.in (63.09 N.m) LXM05BD57N4, 380...480 V, three phase 558.39 lbf.in (63.09 N.m) LXM05CD57N4, 380...480 V, three phase |
| Nominal Output Power | 5000 W LXM32.D72N4 24 A, 400 V, three phase 5000 W LXM32.D72N4 24 A, 480 V, three phase 3400 W LXM05AD57N4, 380...480 V, three phase 3400 W LXM05BD57N4, 380...480 V, three phase 3400 W LXM05CD57N4, 380...480 V, three phase |
| Nominal Torque | 168.16 lbf.in (19 N.m) LXM32.D72N4 24 A, 400 V, three phase 168.16 lbf.in (19 N.m) LXM32.D72N4 24 A, 480 V, three phase 95.59 lbf.in (10.8 N.m) LXM05AD57N4, 380...480 V, three phase 95.59 lbf.in (10.8 N.m) LXM05BD57N4, 380...480 V, three phase 95.59 lbf.in (10.8 N.m) LXM05CD57N4, 380...480 V, three phase |
| Nominal Speed | 2500 rpm LXM32.D72N4 24 A, 400 V, three phase 2500 rpm LXM32.D72N4 24 A, 480 V, three phase 3000 rpm LXM05AD57N4, 380...480 V, three phase 3000 rpm LXM05BD57N4, 380...480 V, three phase 3000 rpm LXM05CD57N4, 380...480 V, three phase |
| Product Compatibility | LXM05AD57N4 380...480 V three phase LXM05BD57N4 380...480 V three phase LXM05CD57N4 380...480 V three phase LXM32.D72N4 400 V three phase LXM32.D72N4 480 V three phase |
| Shaft End | Untapped |
| Ip Degree Of Protection | IP50 standard |
| Speed Feedback Resolution | 131072 points/turn |
| Holding Brake | With |
| Mounting Support | International standard flange |
| Electrical Connection | Straight connectors |

Complementary

Price is "List Price" and may be subject to a trade discount – check with your local distributor or retailer for actual price.

Disclaimer: This documentation is not intended as a substitute for and is not to be used for determining suitability or reliability of these products for specific user applications

| | |
|---------------------------------------|--|
| Range Compatibility | Lexium 32 Lexium 05 |
| Supply Voltage Max | 480 V |
| Phase | Three phase |
| Continuous Stall Current | 21.3 A |
| Maximum Continuous Power | 4.33 W |
| Maximum Current Irms | 72 A LXM32.D72N4 95.6 A LXM05AD57N4 95.6 A LXM05BD57N4 95.6 A LXM05CD57N4 |
| Maximum Permanent Current | 95.6 A |
| Switching Frequency | 8 kHz |
| Second Shaft | Without second shaft end |
| Shaft Diameter | 0.94 in (24 mm) |
| Shaft Length | 1.97 in (50 mm) |
| Feedback Type | Single turn SinCos Hiperface |
| Holding Torque | 318.63 lbf.in (36 N.m) holding brake |
| Motor Flange Size | 5.51 in (140 mm) |
| Number Of Motor Stacks | 4 |
| Torque Constant | 1.57 N.m/A 248 °F (120 °C) |
| Back Emf Constant | 104 V/krpm 248 °F (120 °C) |
| Number Of Motor Poles | 10 |
| Rotor Inertia | 29.2 kg.cm² |
| Stator Resistance | 0.28 Ohm 68 °F (20 °C) |
| Stator Inductance | 3.9 mH 68 °F (20 °C) |
| Stator Electrical Time Constant | 13.93 ms 68 °F (20 °C) |
| Maximum Radial Force Fr | 1840 N 3000 rpm 2110 N 2000 rpm 2660 N 1000 rpm |
| Maximum Axial Force Fa | 0.2 x Fr |
| Brake Pull-In Power | 26 W |
| Type Of Cooling | Natural convection |
| Length | 16.56 in (420.5 mm) |
| Centring Collar Diameter | 5.12 in (130 mm) |
| Centring Collar Depth | 0.14 in (3.5 mm) |
| Number Of Mounting Holes | 4 |
| Mounting Holes Diameter | 0.43 in (11 mm) |
| Circle Diameter Of The Mounting Holes | 6.50 in (165 mm) |
| Net Weight | 61.29 lb(US) (27.8 kg) |

Ordering and shipping details

| | |
|-------------------|---------------|
| Category | US1PC5318282 |
| Discount Schedule | PC53 |
| Gtin | 3389118361416 |

| | |
|-------------------|----|
| Returnability | No |
| Country Of Origin | DE |

Packing Units

| | |
|------------------------------|------------------------|
| Unit Type Of Package 1 | PCE |
| Number Of Units In Package 1 | 1 |
| Package 1 Height | 10.63 in (27.0 cm) |
| Package 1 Width | 10.63 in (27.0 cm) |
| Package 1 Length | 23.86 in (60.6 cm) |
| Package 1 Weight | 45.42 lb(US) (20.6 kg) |

Contractual warranty

| | |
|----------|-----------|
| Warranty | 18 months |
|----------|-----------|

Sustainability



Green Premium™ label is Schneider Electric’s commitment to delivering products with best-in-class environmental performance. Green Premium promises compliance with the latest regulations, transparency on environmental impacts, as well as circular and low-CO₂ products.

Guide to assessing product sustainability is a white paper that clarifies global eco-label standards and how to interpret environmental declarations.

[Learn more about Green Premium >](#)

[Guide to assess a product’s sustainability >](#)



Transparency RoHS/REACH

Well-being performance

 Mercury Free

 Rohs Exemption Information [Yes](#)

 Pvc Free

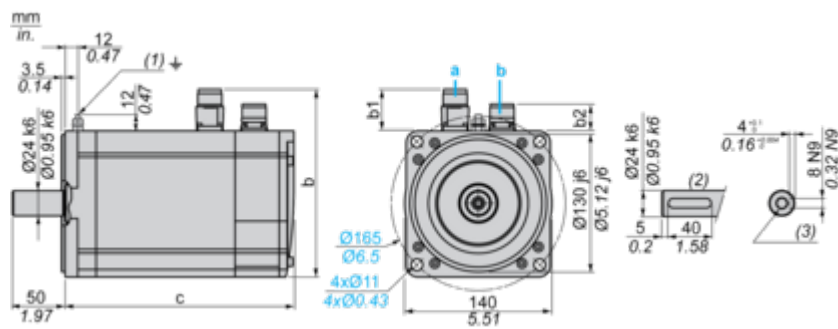
Certifications & Standards

| | |
|---------------------------|---|
| Reach Regulation | REACH Declaration |
| Eu Rohs Directive | Pro-active compliance (Product out of EU RoHS legal scope) |
| China Rohs Regulation | China RoHS declaration |
| Environmental Disclosure | Product Environmental Profile |
| Weee | The product must be disposed on European Union markets following specific waste collection and never end up in rubbish bins. |
| Circularity Profile | No need of specific recycling operations |
| California Proposition 65 | WARNING: This product can expose you to chemicals including: Lead and lead compounds, which is known to the State of California to cause cancer and birth defects or other reproductive harm. For more information go to www.P65Warnings.ca.gov |

Dimensions Drawings

Servo Motors Dimensions

Example with Straight Connectors



- a: Power supply for servo motor brake
b: Power supply for servo motor encoder
(1) M4 screw
(2) Shaft end, keyed slot (optional)
(3) For screws M8 x 19 mm/M8 x 0.75 in.

Dimensions in mm

| Straight connectors | | | Rotatable angled connectors | | | c (without brake) | c (with brake) |
|---------------------|----|------|-----------------------------|----|------|-------------------|----------------|
| b | b1 | b2 | b | b1 | b2 | | |
| 192.5 | 54 | 25.5 | 198.5 | 60 | 39.5 | 383 | 421 |

Dimensions in in.

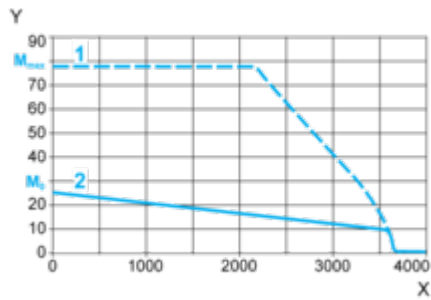
| Straight connectors | | | Rotatable angled connectors | | | c (without brake) | c (with brake) |
|---------------------|------|------|-----------------------------|------|------|-------------------|----------------|
| b | b1 | b2 | b | b1 | b2 | | |
| 7.57 | 2.12 | 1.00 | 7.81 | 2.36 | 1.55 | 15.07 | 16.57 |

Performance Curves

400 V 3-Phase Supply Voltage

Torque/Speed Curves

Servo motor with LXM32•D72N4 servo drive

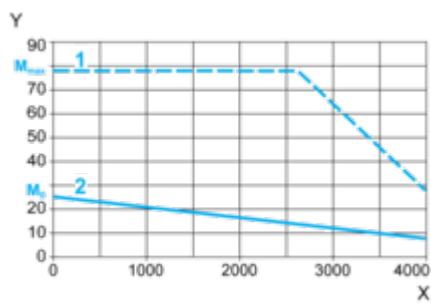


- X Speed in rpm
- Y Torque in Nm
- 1 Peak torque
- 2 Continuous torque

480 V 3-Phase Supply Voltage

Torque/Speed Curves

Servo motor with LXM32•D72N4 servo drive



- X Speed in rpm
- Y Torque in Nm
- 1 Peak torque
- 2 Continuous torque