

Product data sheet

Specifications



Cantilever axis, Lexium CAS, model range 4, profile size 80 x 80 mm, toothed belt, ball guide

CAS43BB

Main

Range Of Product	Lexium CAS
Product Or Component Type	Cantilever axis
Product Specific Application	For 1 direction
Load Position	On the side of the profile or on the 2 end plates
Drive Type	Toothed belt
Type Of Guide	Ball

Complementary

Operating Position	Vertical
Function Available	Different types of sensors for the limit switch function Increased corrosion resistance Anti-static toothed belt Protective cover strip for the axis inner parts Motor and gearbox mounting options
Operating Force	900 N for Fx 5550 N for Fy 5550 N for Fz
Maximum Speed	9.84 ft/s (3 m/s)
Acceleration	164.04 ft/s² (50 m/s²)
Max. Drive Torque	265.52 lbf.in (30 N.m)
Max. Torque	<469.09 lbf.in (53 N.m) for Mx <4310.31 lbf.in (487 N.m) for My <4310.31 lbf.in (487 N.m) for Mz
Min. ... Max. Stroke	0.43...39.37 in (11... 1000 mm)
Repeat Accuracy	+/- 0.05 mm
Profile Dimension	106 x 100 mm
Service Life	15000 km

Packing Units

Unit Type Of Package 1	PCE
Number Of Units In Package 1	1

Contractual warranty

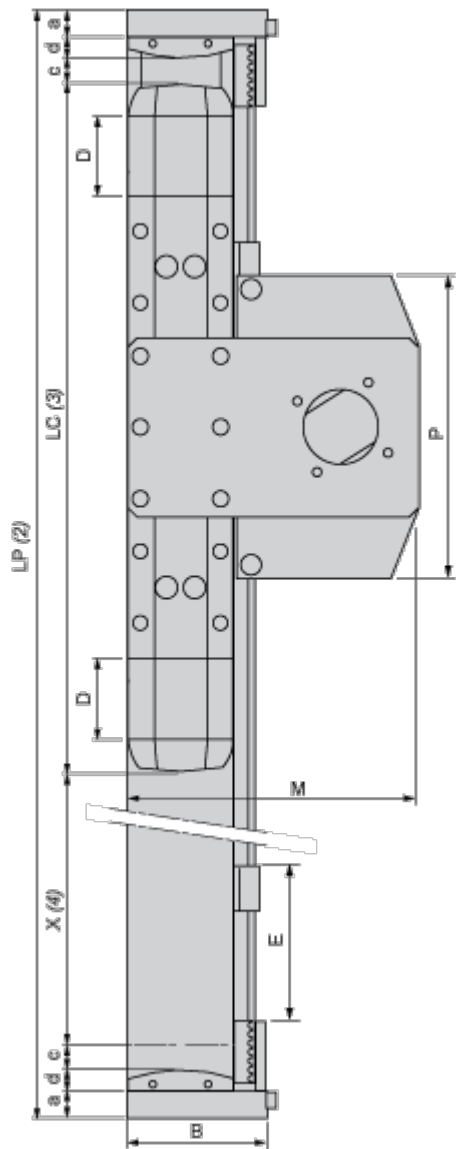
Warranty	18 months
----------	-----------

Price is "List Price" and may be subject to a trade discount – check with your local distributor or retailer for actual price.

Disclaimer: This documentation is not intended as a substitute for and is not to be used for determining suitability or reliability of these products for specific user applications

Dimensions Drawings

Size Characteristics



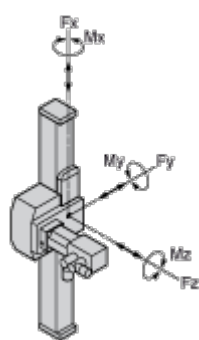
- (2) LP: total length of axis
- (3) LC: length of drive element
- (4) X: stroke, depending on application

		Without protective metal strip	With protective metal strip
a	mm	20	20
	in.	0.79	0.79
B	mm	100	100
	in.	3.94	3.94
c	mm	20	20

		Without protective metal strip	With protective metal strip
	in.	0.79	0.79
d	mm	–	15
	in.	–	0.59
D	mm	–	60
	in.	–	2.36
E	mm	109	184
	in.	4.29	7.24
LC	mm	364	484
	in.	14.33	19.06
LP	mm	= 444 + X	= 594 + X
	in.	= 17.48 + X	= 23.39 + X
M	mm	195	195
	in.	7.68	7.68
P	mm	200	200
	in.	7.87	7.87

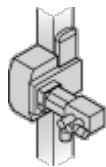
Technical Description

Forces and Torques Exerted on the Lexium CAS 4 Cantilever Axis

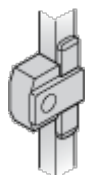


Types of Interface for the Drive Element

Drive Element Fixed on Right-Hand Side

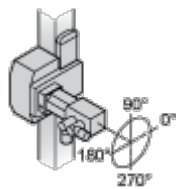


Axis with no Drive

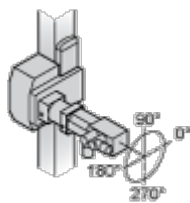


Possible Motor Drive Configurations and Orientations

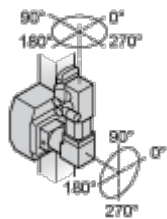
Motor only without Gearbox



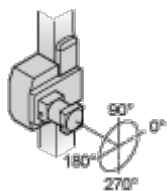
Motor with Planetary Gearbox



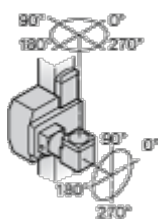
Motor with Angular Planetary Gearbox



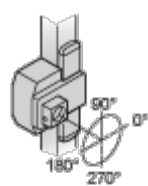
Planetary Gearbox Only



Angular Planetary Gearbox Only



Without Motor / Without Gearbox / With Adaptor Plate for the Drive Element



Without Motor / Without Gearbox

