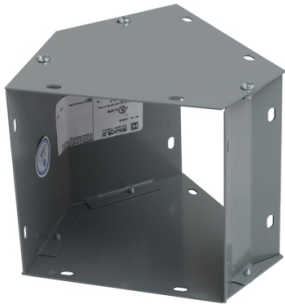


Product data sheet

Specifications

SQUARE D



Elbow, SQUARE-Duct, 45 degree, Type 16in H x 6in W

LDB645L

⚠ Discontinued on: Dec 18, 2023

Product availability: Stock - Normally stocked in distribution facility

⚠ Discontinued

Main

Range	SQUARE-Duct
Product Type	Elbow
Direction Change Type	45°
Cross Section	6 x 6 in
Enclosure Rating	NEMA 1
Certifications	UL Listed CSA

Ordering and shipping details

Category	US10PE901421
Discount Schedule	0PE9
Gtin	785901199953
Returnability	Yes
Country Of Origin	MX

Packing Units

Unit Type Of Package 1	PCE
Number Of Units In Package 1	1
Package 1 Height	6.20 in (15.748 cm)
Package 1 Width	7.20 in (18.288 cm)
Package 1 Length	7.30 in (18.542 cm)
Package 1 Weight	2.37 lb(US) (1.075 kg)

Contractual warranty

Warranty	18 months
----------	-----------

Price is "List Price" and may be subject to a trade discount – check with your local distributor or retailer for actual price.

Sustainability

Green Premium™ label is Schneider Electric’s commitment to delivering products with best-in-class environmental performance. Green Premium promises compliance with the latest regulations, transparency on environmental impacts, as well as circular and low-CO₂ products.

Guide to assessing product sustainability is a white paper that clarifies global eco-label standards and how to interpret environmental declarations.

[Learn more about Green Premium >](#)

[Guide to assess a product’s sustainability >](#)

Well-being performance

✓	Reach Free Of Svhc	
✓	Toxic Heavy Metal Free	
✓	Mercury Free	
✓	Rohs Exemption Information	Yes
<hr/>		
Eu Rohs Directive		Pro-active compliance (Product out of EU RoHS legal scope) EU RoHS Declaration
<hr/>		
China Rohs Regulation		China RoHS declaration Pro-active China RoHS declaration (out of China RoHS legal scope)
<hr/>		