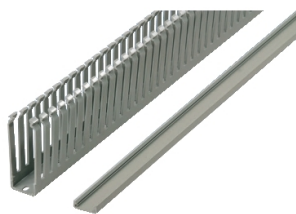


# Product data sheet

Specifications



Cable ducting with cover, RAL 7030, H75xW50mm, length 2m. Packaging unit: 24.

NSYCD2M5075

⚠ Discontinued

## Main

Accessory / Separate Part Category	Cable management accessory
Product Or Component Type	Cable duct
Range Compatibility	Thalassa Thalassa PLS Thalassa Thalassa PLA Thalassa Thalassa PLM Spacial Spacial SBM Spacial Spacial S3D Spacial Spacial S3CM Spacial Spacial CRN
Anwendung	Multi-purpose
Device Composition	1 cable duct 1 cover
Quantity Per Set	Set of 12

## Complementary

Material	PVC (polyvinyl chloride)
Color	Gray RAL 7030)
Length	78.74 in (2000 mm)
Height	2.95 in (75 mm)
Width	1.97 in (50 mm)

## Environment

Environmental Characteristic	Slotted trunking; Requirements and tests VDE 0660-506 Slotted trunkings for switchgear assemblies DIN 43659
Fire Resistance	1760 °F (960 °C) IEC 60695-2-1/1 1760 °F (960 °C) UL94 (material V0)
Ambient Air Temperature For Operation	23...140 °F (-5...60 °C)

## Ordering and shipping details

Category	80036-ENCLOSURE SYSTEMS ACCESSORIES
Discount Schedule	ES1
Gtin	3606480180927
Returnability	No
Country Of Origin	FR

Price is "List Price" and may be subject to a trade discount – check with your local distributor or retailer for actual price.

Disclaimer: This documentation is not intended as a substitute for and is not to be used for determining suitability or reliability of these products for specific user applications

# Contractual warranty

Warranty	18 months
----------	-----------

# Sustainability

**Green Premium™ label** is Schneider Electric’s commitment to delivering products with best-in-class environmental performance. Green Premium promises compliance with the latest regulations, transparency on environmental impacts, as well as circular and low-CO<sub>2</sub> products.

**Guide to assessing product sustainability** is a white paper that clarifies global eco-label standards and how to interpret environmental declarations.

[Learn more about Green Premium >](#)

[Guide to assess a product’s sustainability >](#)



Transparency

**Eu Rohs Directive**

Pro-active compliance (Product out of EU RoHS legal scope)

[EU RoHS Declaration](#)

**Environmental Disclosure**

[Product Environmental Profile](#)