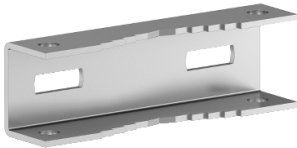


Product data sheet

Specifications



Post fixing device WM Spacial,
length 800. For post max 675.
Max. Load:100kg.

NSYSFPSC80

Product availability: Non-Stock - Not normally stocked in
distribution facility

Price*: 297.61 USD

Main

Range	Spacial
Accessory / Separate Part Category	Fixing accessory
Product Or Component Type	Post fixing device
Device Application	Multi-purpose
Enclosure Nominal Dimensions	-
Mounting Location	Rear of enclosure
Range Compatibility	Spacial Spacial S3D Spacial Spacial SBM Spacial Spacial CRN
Device Composition	fixing elements 2 support rail 2 strip
Quantity Per Set	Set of 1

Complementary

Material	galvanised steel
Fixing Mode	By fixing element M8 - to the inserts in the rear of the enclosure Minimum diameter 150 mm Maximum diameter 215 mm
Permanent Permissible Load	220.46 lb(US) (100 kg)
Height	1.77 in (45 mm)
Width	31.30 in (795 mm)
Depth	1.28 in (32.5 mm)
Net Weight	8.82 lb(US) (4 kg)

Ordering and shipping details

Category	US10ES180036
Discount Schedule	0ES1
Gtin	3606480198908
Returnability	No
Country Of Origin	ES

Packing Units

Price is "List Price" and may be subject to a trade discount – check with your local distributor or retailer for actual price.

Disclaimer: This documentation is not intended as a substitute for and is not to be used for determining suitability or reliability of these products for specific user applications

Unit Type Of Package 1	PCE
Number Of Units In Package 1	1
Package 1 Height	31.34 in (79.6 cm)
Package 1 Width	5.51 in (14.0 cm)
Package 1 Length	1.57 in (4.0 cm)
Package 1 Weight	8.82 lb(US) (4.0 kg)

Contractual warranty

Warranty	18 months
----------	-----------

Sustainability



Green Premium™ label is Schneider Electric’s commitment to delivering products with best-in-class environmental performance. Green Premium promises compliance with the latest regulations, transparency on environmental impacts, as well as circular and low-CO₂ products.

Guide to assessing product sustainability is a white paper that clarifies global eco-label standards and how to interpret environmental declarations.

[Learn more about Green Premium >](#)

[Guide to assess a product’s sustainability >](#)



Transparency RoHS/REACH

Well-being performance

✓	Reach Free Of Svhc	
✓	Toxic Heavy Metal Free	
✓	Mercury Free	
✓	Rohs Exemption Information	Yes

Certifications & Standards

Reach Regulation	REACH Declaration
Eu Rohs Directive	Pro-active compliance (Product out of EU RoHS legal scope) EU RoHS Declaration
China Rohs Regulation	China RoHS declaration Pro-active China RoHS declaration (out of China RoHS legal scope)
Environmental Disclosure	Product Environmental Profile
Circularity Profile	No need of specific recycling operations