

# Product data sheet

Specifications



portal axis PAS E - profile size  
40x40mm - toothed belt - roller -  
stroke 1900mm

PAS41E1900

⚠ Discontinued on: Sep 19, 2022

⚠ Discontinued

## Main

Range Of Product	Lexium PAS E
Product Or Component Type	Portal axis
Product Specific Application	For 1 direction
Load Position	On carriage
Drive Type	Toothed belt
Type Of Guide	Roller

## Complementary

Operating Position	Horizontal
Typical Payload	8.82 lb(US) (4 kg)
Distance Per Revolution	3.31 in (84 mm)
Operating Force	300 N for Fx 660 N for Fy 430 N for Fz
Maximum Speed	6.56 ft/s (2 m/s)
Maximum Acceleration	49.21 ft/s <sup>2</sup> (15 m/s <sup>2</sup> )
Max. Drive Torque	35.40 lbf.in (4 N.m)
Max. Torque	<44.25 lbf.in (5 N.m) for Mx <97.36 lbf.in (11 N.m) for My <150.46 lbf.in (17 N.m) for Mz
Stroke	74.80 in (1900 mm)
Product Weight	7.94 lb(US) (3.6 kg) at 0 stroke with carriage and motor 1.10 lb(US) (0.5 kg) of carriage 43.43 lb(US) (19.7 kg) total
Repeat Accuracy	+/- 0.05 mm
Profile Dimension	40 x 40 mm
Service Life	30000 km
Associated Module	PLE40 planetary gearbox 3:1 supplied) BSH0552P01A2A servo motor supplied) LXM32.U60N4 servo drive not supplied)

## Ordering and shipping details

Gtin	3606485236445
------	---------------

## Packing Units

Price is "List Price" and may be subject to a trade discount – check with your local distributor or retailer for actual price.

Disclaimer: This documentation is not intended as a substitute for and is not to be used for determining suitability or reliability of these products for specific user applications

Unit Type Of Package 1	PCE
Number Of Units In Package 1	1
Package 1 Height	10.43 in (26.5 cm)
Package 1 Width	19.21 in (48.8 cm)
Package 1 Length	92.40 in (234.7 cm)
Package 1 Weight	43.42 lb(US) (19.694 kg)

## Contractual warranty

Warranty	18 months
----------	-----------

## Sustainability

**Green Premium™ label** is Schneider Electric's commitment to delivering products with best-in-class environmental performance. Green Premium promises compliance with the latest regulations, transparency on environmental impacts, as well as circular and low-CO<sub>2</sub> products.

**Guide to assessing product sustainability** is a white paper that clarifies global eco-label standards and how to interpret environmental declarations.

[Learn more about Green Premium >](#)

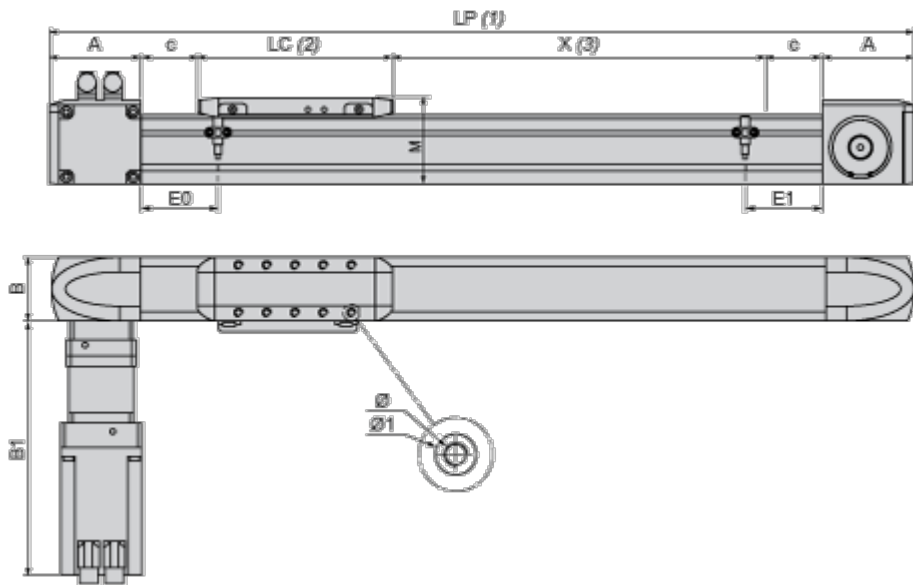
[Guide to assess a product's sustainability >](#)

## Well-being performance

	Reach Free Of Svhc	
	Mercury Free	
	Rohs Exemption Information	Yes
	Pvc Free	
Reach Regulation	<a href="#">REACH Declaration</a>	
Eu Rohs Directive	Pro-active compliance (Product out of EU RoHS legal scope)	
China Rohs Regulation	<a href="#">China RoHS declaration</a>	
Weee	The product must be disposed on European Union markets following specific waste collection and never end up in rubbish bins.	
California Proposition 65	WARNING: This product can expose you to chemicals including: Lead and lead compounds, which is known to the State of California to cause cancer and birth defects or other reproductive harm. For more information go to <a href="http://www.P65Warnings.ca.gov">www.P65Warnings.ca.gov</a>	

Dimensions Drawings

Size Characteristics



- (1) LP : total length of axis
- (2) LC : length of carriage
- (3) X : Stroke, refer to product characteristics.

A	mm	53.5
	in.	2.11
B	mm	40
	in.	1.57
B1	mm	258
	in.	10.16
c	mm	10
	in.	0.39
E0	mm	25
	in.	0.98
E1	mm	25
	in.	0.98
LC	mm	200
	in.	7.87

LP	mm	= 127 + LC + X
	in.	= 5.00 + LC + X
M	mm	55
	in.	2.16
Ø	mm	M5 X 12
	in.	M5 X 0.47
Ø1	mm	g <sup>H7</sup> X 2.1
	in.	g <sup>H7</sup> X 0.08

Mounting and Clearance

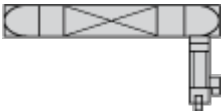
Servo Motor Mounting

---

Standard servo motor mounting



Servo motor mounted on the left



Performance Curves

Axis Positioning Time as a Function of the Stroke



X : Stroke

Y : Positioning time

Technical Description

Forces and Torques Exerted on the Lexium PAS E Portal Axis

