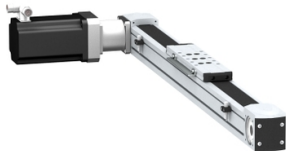


# Product data sheet

Specifications



portal axis PAS E - profile size  
60x60mm - toothed belt - ball -  
stroke 1750mm

PAS42E1750

⚠ Discontinued on: Sep 19, 2022

⚠ Discontinued

## Main

Range Of Product	Lexium PAS E
Product Or Component Type	Portal axis
Product Specific Application	For 1 direction
Load Position	On carriage
Drive Type	Toothed belt
Type Of Guide	Ball

## Complementary

Operating Position	Horizontal
Typical Payload	26.46 lb(US) (12 kg)
Distance Per Revolution	6.10 in (155 mm)
Operating Force	800 N for Fx 2810 N for Fy 2810 N for Fz
Maximum Speed	6.56 ft/s (2 m/s)
Maximum Acceleration	49.21 ft/s <sup>2</sup> (15 m/s <sup>2</sup> )
Max. Drive Torque	35.40 lbf.in (4 N.m)
Max. Torque	<44.25 lbf.in (5 N.m) for Mx <97.36 lbf.in (11 N.m) for My <150.46 lbf.in (17 N.m) for Mz
Stroke	68.90 in (1750 mm)
Product Weight	16.53 lb(US) (7.5 kg) at 0 stroke with carriage and motor 2.20 lb(US) (1 kg) of carriage 63.93 lb(US) (29 kg) total
Repeat Accuracy	+/- 0.05 mm
Profile Dimension	60 x 60 mm
Service Life	30000 km
Associated Module	PLE60 planetary gearbox 5:1 supplied) BMH0702P06A2A servo motor supplied) LXM32.D12N4 servo drive not supplied)

## Ordering and shipping details

Gtin	3606485236896
------	---------------

## Packing Units

Price is "List Price" and may be subject to a trade discount – check with your local distributor or retailer for actual price.

Disclaimer: This documentation is not intended as a substitute for and is not to be used for determining suitability or reliability of these products for specific user applications

Unit Type Of Package 1	PCE
Number Of Units In Package 1	1
Package 1 Height	10.43 in (26.5 cm)
Package 1 Width	19.21 in (48.8 cm)
Package 1 Length	89.21 in (226.6 cm)
Package 1 Weight	63.86 lb(US) (28.965 kg)

## Contractual warranty

Warranty	18 months
----------	-----------

## Sustainability





**Green Premium™ label** is Schneider Electric's commitment to delivering products with best-in-class environmental performance. Green Premium promises compliance with the latest regulations, transparency on environmental impacts, as well as circular and low-CO<sub>2</sub> products.

**Guide to assessing product sustainability** is a white paper that clarifies global eco-label standards and how to interpret environmental declarations.

[Learn more about Green Premium >](#)

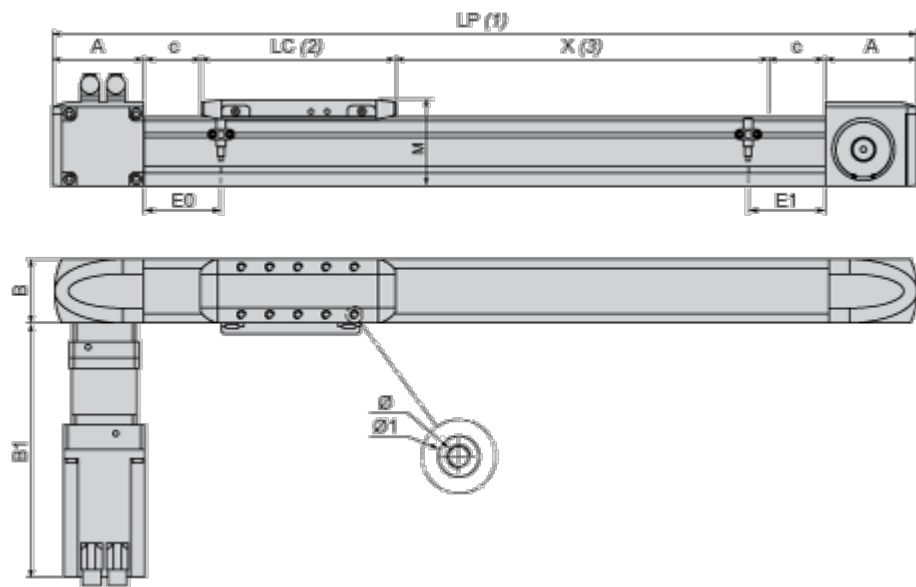
[Guide to assess a product's sustainability >](#)

## Well-being performance

	Reach Free Of Svhc	
	Mercury Free	
	Rohs Exemption Information	Yes
	Pvc Free	
Reach Regulation	<a href="#">REACH Declaration</a>	
Eu Rohs Directive	Pro-active compliance (Product out of EU RoHS legal scope)	
China Rohs Regulation	<a href="#">China RoHS declaration</a>	
Weee	The product must be disposed on European Union markets following specific waste collection and never end up in rubbish bins.	
California Proposition 65	WARNING: This product can expose you to chemicals including: Lead and lead compounds, which is known to the State of California to cause cancer and birth defects or other reproductive harm. For more information go to <a href="http://www.P65Warnings.ca.gov">www.P65Warnings.ca.gov</a>	

Dimensions Drawings

Size Characteristics



- (1) LP : total length of axis
- (2) LC : length of carriage
- (3) X : Stroke, refer to product characteristics.

A	mm	80
	in.	3.15
B	mm	60
	in.	2.36
B1	mm	278
	in.	10.94
c	mm	15
	in.	0.59
E0	mm	33
	in.	1.30
E1	mm	33
	in.	1.30
LC	mm	206
	in.	8.11

LP	mm	= 190 + LC + X
	in.	= 7.48 + LC + X
M	mm	75
	in.	2.95
Ø	mm	M5 X 12
	in.	M5 X 0.47
Ø1	mm	g <sup>H7</sup> X 2.1
	in.	g <sup>H7</sup> X 0.08

Mounting and Clearance

Servo Motor Mounting

---

Standard servo motor mounting

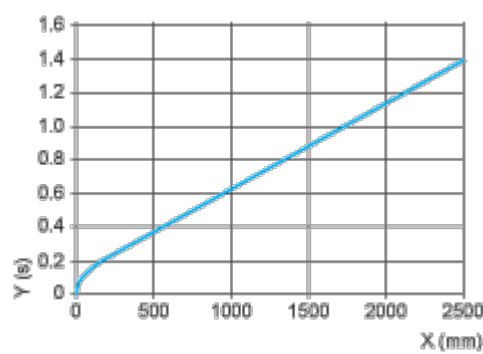


Servo motor mounted on the left



Performance Curves

Axis Positioning Time as a Function of the Stroke



X : Stroke

Y : Positioning time

Technical Description

Forces and Torques Exerted on the Lexium PAS E Portal Axis

---

