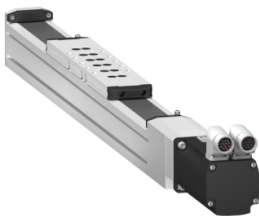


# Product data sheet

Specifications



Portal axis, Lexium PAS, model range 4, profile size 110 x 110 mm, ball screw, lead 10 mm per revolution, ball guide

PAS44SBD

## Main

Range Of Product	Lexium PAS
Product Or Component Type	Portal axis
Product Specific Application	For 1 direction
Load Position	On carriage
Drive Type	Ball screw
Type Of Guide	Ball

## Complementary

Operating Position	Horizontal
Function Available	Ballscrew support for longer strokes and higher speeds Different types of sensors for the limit switch function Different carriage lengths adapted to the load Additional carriages option Protective cover strip for the axis inner parts Motor and gearbox mounting options
Distance Per Revolution	0.39 in (10 mm)
Diameter	For ball screw 0.98 in (25 mm)
Axial Backlash	0.00 in (0.04 mm) for ball screw
Operating Force	4520 N for Fx 9040 N for Fy 9040 N for Fz
Maximum Speed	1.64 ft/s (0.5 m/s)
Maximum Acceleration	13.12 ft/s² (4 m/s²)
Max. Drive Torque	79.66 lbf.in (9 N.m)
Max. Torque	<867.37 lbf.in (98 N.m) for Mx <8275.43 lbf.in (935 N.m) for My carriage type 1) <19073.33 lbf.in (2155 N.m) for My carriage type 4) <8275.43 lbf.in (935 N.m) for Mz carriage type 1) <19073.33 lbf.in (2155 N.m) for Mz carriage type 4)
Min. ... Max. Stroke	0.51...118.11 in (13...3000 mm)
Repeat Accuracy	+/- 0.02 mm
Profile Dimension	110 x 135 mm
Service Life	10000 km

## Packing Units

Unit Type Of Package 1	PCE
Number Of Units In Package 1	1

Price is "List Price" and may be subject to a trade discount – check with your local distributor or retailer for actual price.

Disclaimer: This documentation is not intended as a substitute for and is not to be used for determining suitability or reliability of these products for specific user applications

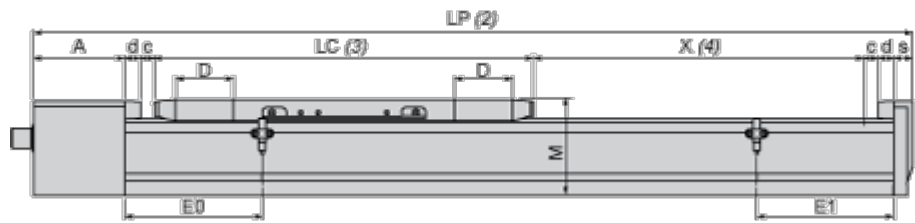
Package 1 Weight	2.20 lb(US) (1 kg)
------------------	--------------------

## Contractual warranty

Warranty	18 months
----------	-----------

Dimensions Drawings

Size Characteristics



- (2) LP : total length of axis
- (3) LC : length of carriage
- (4) X : Stroke, depending on application

		Without protective metal strip	With protective metal strip
A	mm	110	110
	in.	4.33	4.33
c	mm	20	20
	in.	0.79	0.79
d	mm	20	20
	in.	0.79	0.79
D	mm	–	80
	in.	–	3.15
LP	mm	= 215 + LC + X	= 215 + LC + X
	in.	= 8.46 + LC + X	= 8.46 + LC + X
M	mm	135	135
	in.	5.31	5.31
s	mm	25	25
	in.	0.98	0.98

Carriage type 1			
		Without protective metal strip	With protective metal strip
E0	mm	120	200
	in.	4.72	7.87
E1	mm	120	200

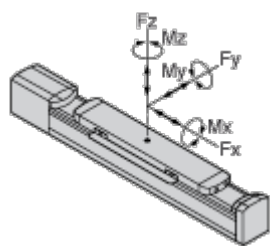
Carriage type 1			
		Without protective metal strip	With protective metal strip
	in.	4.72	7.87
LC	mm	330	490
	in.	12.99	19.29

Carriage type 4			
		Without protective metal strip	With protective metal strip
E0	mm	120	200
	in.	4.72	7.87
E1	mm	390	470
	in.	15.35	18.50
LC	mm	600	760
	in.	23.62	29.92

Technical Description

Forces and Torques Exerted on the Lexium PAS S Portal Axis

---



Types of Interface for the Drive Element

---

With Motor or Adaptor Plate

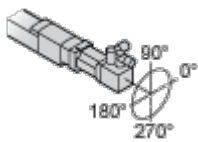


With Shaft

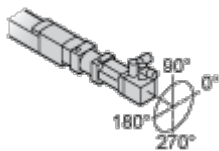


Possible Motor Drive Configurations and Orientations

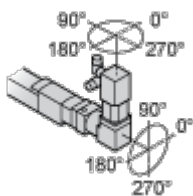
Motor Only Without Gearbox



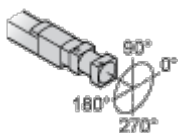
Motor With Planetary Gearbox



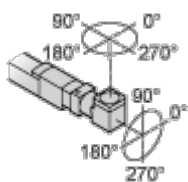
Motor With Angular Planetary Gearbox



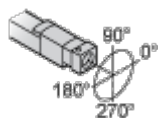
Planetary Gearbox Only



Angular Planetary Gearbox Only



Without Motor / Without Gearbox / With Adaptor Plate for the Drive



Without Motor / Without Gearbox

