

Product data sheet

Specifications



Modicon M171 Performance Plug-in Ethernet and BACnet MSTP or Modbus

TM171AETHRS485

⚠ Discontinued on: Sep 15, 2023

⚠ To be end-of-service on: Dec 31, 2024

⚠ Discontinued

Product availability: Non-Stock - Not normally stocked in distribution facility

Main

Range Of Product	Modicon M171
Product Or Component Type	Communication module
Communication Port Protocol	BACnet IP SMTP HTTP Ethernet Modbus TCP Modbus RTU RS485 BACnet MS/TP

Complementary

Integrated Connection Type	Ethernet RJ45 - twisted pair RS485 wire crimp - twisted pair
Adjustment	Pitch 3.81 mm
Electrical Connection	removable screw terminal block
Physical Interface	90° insertion - 0.00 in² (2.5 mm²) cable RJ45
Supply	Via base board EVD/EVC
Product Compatibility	Logic controller M171 performance
Net Weight	0.17 lb(US) (0.077 kg)

Environment

Product Certifications	CE CSA cURus EAC
Marking	CE
Ip Degree Of Protection	IP20
Ambient Air Temperature For Operation	14...131 °F (-10...55 °C)
Ambient Air Temperature For Storage	-4...185 °F (-20...85 °C)
Relative Humidity	10...90 % without condensation

Ordering and shipping details

Category	US1PC1222537
----------	--------------

Price is "List Price" and may be subject to a trade discount – check with your local distributor or retailer for actual price.

Disclaimer: This documentation is not intended as a substitute for and is not to be used for determining suitability or reliability of these products for specific user applications

Discount Schedule	PC12
Gtin	3606480752513
Returnability	No
Country Of Origin	IT

Packing Units

Unit Type Of Package 1	PCE
Number Of Units In Package 1	1
Package 1 Height	5.20 in (13.200 cm)
Package 1 Width	3.58 in (9.100 cm)
Package 1 Length	7.36 in (18.700 cm)
Package 1 Weight	6.13 oz (173.900 g)
Unit Type Of Package 2	S02
Number Of Units In Package 2	6
Package 2 Height	5.91 in (15.000 cm)
Package 2 Width	11.81 in (30.000 cm)
Package 2 Length	15.75 in (40.000 cm)
Package 2 Weight	2.98 lb(US) (1.351 kg)

Sustainability

Green Premium™ label is Schneider Electric's commitment to delivering products with best-in-class environmental performance. Green Premium promises compliance with the latest regulations, transparency on environmental impacts, as well as circular and low-CO₂ products.

Guide to assessing product sustainability is a white paper that clarifies global eco-label standards and how to interpret environmental declarations.

[Learn more about Green Premium >](#)

[Guide to assess a product's sustainability >](#)

Resource performance

✔ Upgradeable Through Digital Modules
And Upgraded Components

Well-being performance

✔ Mercury Free

✔ Rohs Exemption Information [Yes](#)

Reach Regulation [REACH Declaration](#)

Eu Rohs Directive [Pro-active compliance \(Product out of EU RoHS legal scope\)](#)

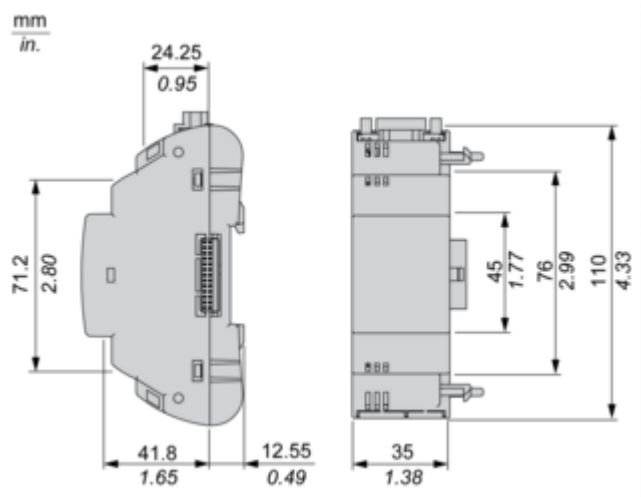
China Rohs Regulation [China RoHS declaration](#)

Weee [The product must be disposed on European Union markets following specific waste collection and never end up in rubbish bins.](#)

California Proposition 65 [WARNING: This product can expose you to chemicals including: Lead and lead compounds, which is known to the State of California to cause cancer and birth defects or other reproductive harm. For more information go to www.P65Warnings.ca.gov](#)

Dimensions Drawings

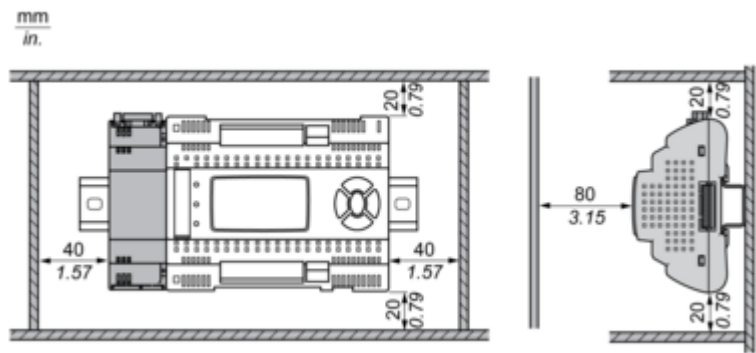
Dimensions



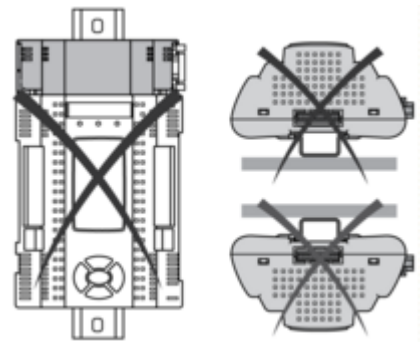
Mounting and Clearance

Mounting and Clearance

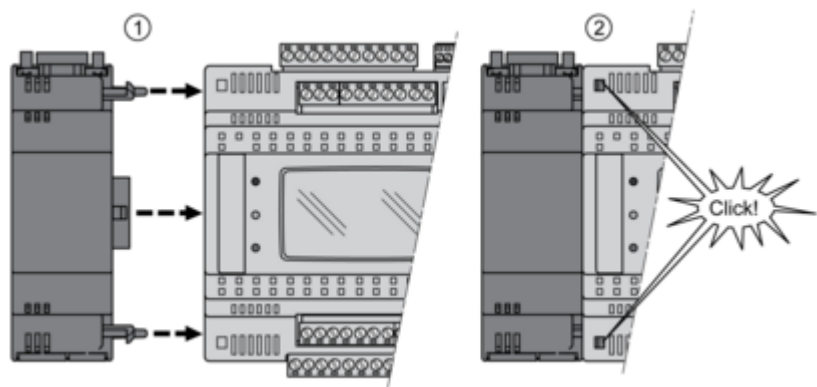
Clearance



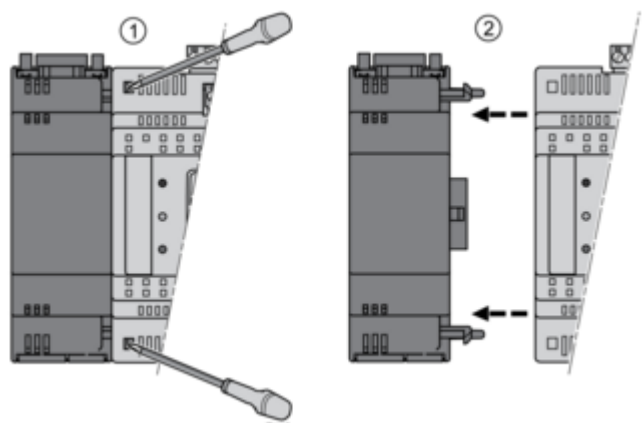
Misplacement



Mounting on Controller

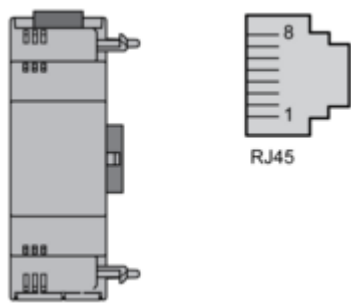


Dismounting



Connections and Schema

Ethernet Port (ETH)



Serial Line Port (RS 485)

