

Product data sheet

Specifications



Modicon M171 Performance Plug-in RS232 with relay

TM171ARS232

Product availability: Non-Stock - Not normally stocked in distribution facility

Price*: 100.87 USD

Main

| | |
|-----------------------------|-------------------------------|
| Range Of Product | Modicon M171 |
| Product Or Component Type | Communication module |
| Communication Port Protocol | RS232 Modbus RTU and ASCII |

Complementary

| | |
|----------------------------|--|
| Integrated Connection Type | RS232 wire crimp - twisted pair |
| Adjustment | Pitch 5 mm |
| Electrical Connection | 3 removable screw terminal block |
| Physical Interface | 90° insertion - 0.00 in² (2.5 mm²) cable DB9 connector |
| Supply | Via base board TM171P/TM172 |
| Product Compatibility | Logic controller M171 performance Logic controller M172 performance |
| Net Weight | 0.17 lb(US) (0.077 kg) |

Environment

| | |
|---------------------------------------|--------------------------------|
| Product Certifications | CSA EAC CE cURus |
| Marking | CE |
| Ip Degree Of Protection | IP20 |
| Ambient Air Temperature For Operation | 14...131 °F (-10...55 °C) |
| Ambient Air Temperature For Storage | -4...185 °F (-20...85 °C) |
| Relative Humidity | 10...90 % without condensation |

Ordering and shipping details

| | |
|-------------------|---------------|
| Category | US1PC1222537 |
| Discount Schedule | PC12 |
| Gtin | 3606480752551 |
| Returnability | No |
| Country Of Origin | IT |

Price is "List Price" and may be subject to a trade discount – check with your local distributor or retailer for actual price.

Disclaimer: This documentation is not intended as a substitute for and is not to be used for determining suitability or reliability of these products for specific user applications

Packing Units

| | |
|------------------------------|-----------------------|
| Unit Type Of Package 1 | PCE |
| Number Of Units In Package 1 | 1 |
| Package 1 Height | 5.12 in (13.0 cm) |
| Package 1 Width | 3.58 in (9.1 cm) |
| Package 1 Length | 7.28 in (18.5 cm) |
| Package 1 Weight | 6.38 oz (181.0 g) |
| Unit Type Of Package 2 | S02 |
| Number Of Units In Package 2 | 6 |
| Package 2 Height | 5.91 in (15.0 cm) |
| Package 2 Width | 11.81 in (30.0 cm) |
| Package 2 Length | 15.75 in (40.0 cm) |
| Package 2 Weight | 3.11 lb(US) (1.41 kg) |

Sustainability


Green Premium™ label is Schneider Electric's commitment to delivering products with best-in-class environmental performance. Green Premium promises compliance with the latest regulations, transparency on environmental impacts, as well as circular and low-CO₂ products.

Guide to assessing product sustainability is a white paper that clarifies global eco-label standards and how to interpret environmental declarations.


[Learn more about Green Premium >](#)


[Guide to assess a product's sustainability >](#)

Resource performance

 Upgradeable Through Digital Modules
And Upgraded Components

Well-being performance

 Mercury Free

 RoHS Exemption Information [Yes](#)

Reach Regulation [REACH Declaration](#)

Eu RoHS Directive Pro-active compliance (Product out of EU RoHS legal scope)

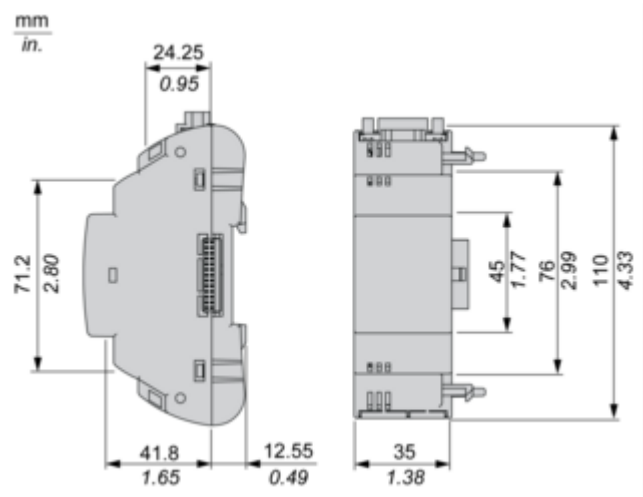
China RoHS Regulation [China RoHS declaration](#)

Weee The product must be disposed on European Union markets following specific waste collection and never end up in rubbish bins.

California Proposition 65 WARNING: This product can expose you to chemicals including: Lead and lead compounds, which is known to the State of California to cause cancer and birth defects or other reproductive harm. For more information go to www.P65Warnings.ca.gov

Dimensions Drawings

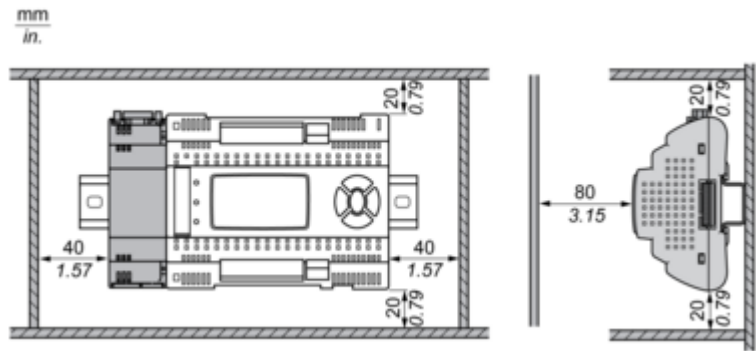
Dimensions



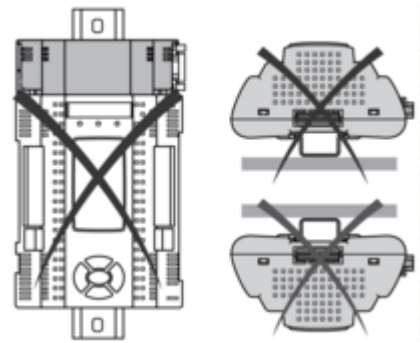
Mounting and Clearance

Mounting and Clearance

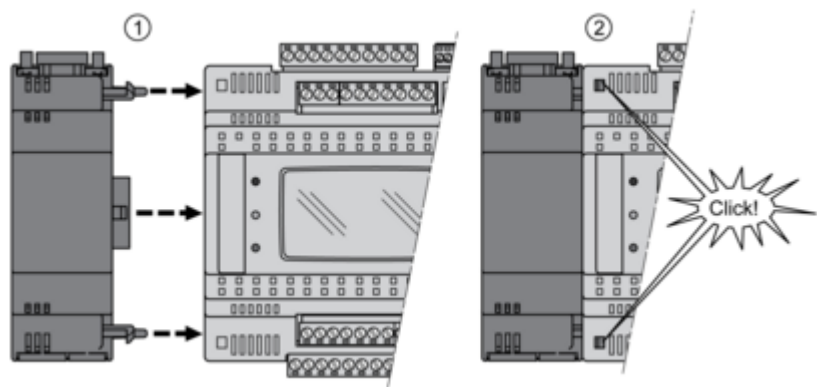
Clearance



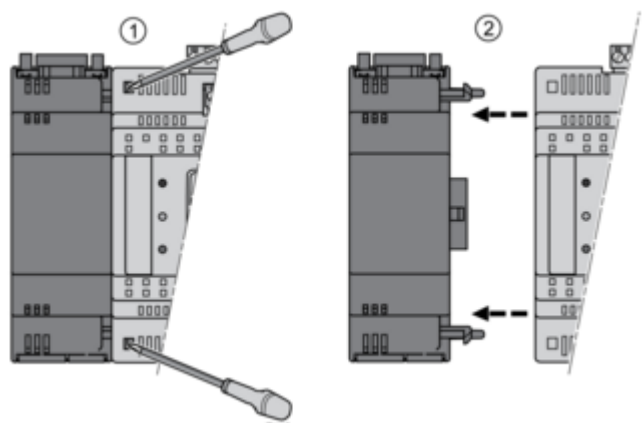
Misplacement



Mounting on Controller



Dismounting

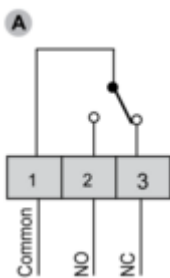
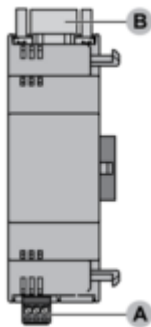


Connections and Schema

Connections and Schema

RS 232 Communication Module

TM171ARS232



NC: Normally Closed.
NO: Normally Open.

| B RS 232 | |
|----------|-------|
| N° | RS232 |
| 1 | GND |
| 2 | DTR |
| 3 | TXD |
| 4 | RXD |
| 5 | DCD |
| 6 | RI |
| 7 | CTS |
| 8 | RTS |
| 9 | DSR |

