

Product data sheet

Specifications



Discrete output module, Modicon Premium, 8 outputs, 1.75W, overvoltage protection by transil diode

TSXDSY08T2

⚠ Discontinued - Service only

⚠ Discontinued on: Dec 2, 2020

⚠ To be end-of-service on: Dec 31, 2026

Product availability: Non-Stock - Not normally stocked in distribution facility

Main

Range Of Product	Modicon Premium Automation platform
Product Or Component Type	Discrete output module
Discrete Output Number	8
Discrete Output Type	Solid state protected
Discrete Output Voltage	24 V DC positive EN/IEC 61131-2 19...30 V
Discrete Output Current	0.5 A

Complementary

Current Per Channel	0.625 A
Maximum Current Per Module	4 A
Maximum Leakage Current	0.5 mA at state 0
[Ures] Residual Voltage	1.2 V
Response Time	1.2 ms
Switching Frequency	0.5/LI² Hz
Output Overvoltage Protection	By transil diode
Reverse Polarity Protection	Reverse mounted diode
Output Overload Protection	Electronic tripping on reactivation
Short-Circuit Protection	Electronic tripping on reactivation
Preactuator Voltage Detection Threshold	16 V
Minimum Load Impedance	48 W
Isalotion Resistance	> 10 MOhm 500 V
Power Dissipation	(1 W + 0.75 W x No of outputs x current per module)
Marking	CE
Electrical Connection	Screw terminal block
Current Consumption	55 mA 5 V DC
Module Format	Standard
Net Weight	0.71 lb(US) (0.32 kg)

Price is "List Price" and may be subject to a trade discount – check with your local distributor or retailer for actual price.

Disclaimer: This documentation is not intended as a substitute for and is not to be used for determining suitability or reliability of these products for specific user applications

Environment

Dielectric Strength	1500 V 50/60 Hz 60 s
Standards	89/336/EEC CSA C22.2 No 213 Class I Division 2 Group B UL 508 IEC 61131-2 CSA C22.2 No 142 73/23/EEC CSA C22.2 No 213 Class I Division 2 Group D CSA C22.2 No 213 Class I Division 2 Group A 93/68/EEC 92/31/EEC CSA C22.2 No 213 Class I Division 2 Group C
Product Certifications	ABS RINA LR GL DNV BV RMRS
Ambient Air Temperature For Operation	32...140 °F (0...60 °C)
Ambient Air Temperature For Storage	-13...158 °F (-25...70 °C)
Relative Humidity	10...95 % without condensation for operation 5...95 % without condensation for storage
Operating Altitude	0...6561.68 ft (0...2000 m)
Protective Treatment	TC
Ip Degree Of Protection	IP20
Pollution Degree	2

Ordering and shipping details

Category	US1PC2222558
Discount Schedule	PC22
Gtin	3389110725544
Returnability	No
Country Of Origin	FR

Packing Units

Unit Type Of Package 1	PCE
Number Of Units In Package 1	1
Package 1 Height	2.17 in (5.5 cm)
Package 1 Width	7.09 in (18.0 cm)
Package 1 Length	10.24 in (26.0 cm)
Package 1 Weight	18.55 oz (526.0 g)
Unit Type Of Package 2	S03
Number Of Units In Package 2	8
Package 2 Height	11.81 in (30.0 cm)
Package 2 Width	11.81 in (30.0 cm)
Package 2 Length	15.75 in (40.0 cm)
Package 2 Weight	9.28 lb(US) (4.208 kg)

Contractual warranty

Warranty	18 months
----------	-----------

Sustainability

Green Premium™ label is Schneider Electric's commitment to delivering products with best-in-class environmental performance. Green Premium promises compliance with the latest regulations, transparency on environmental impacts, as well as circular and low-CO₂ products.

Guide to assessing product sustainability is a white paper that clarifies global eco-label standards and how to interpret environmental declarations.

[Learn more about Green Premium >](#)

[Guide to assess a product's sustainability >](#)

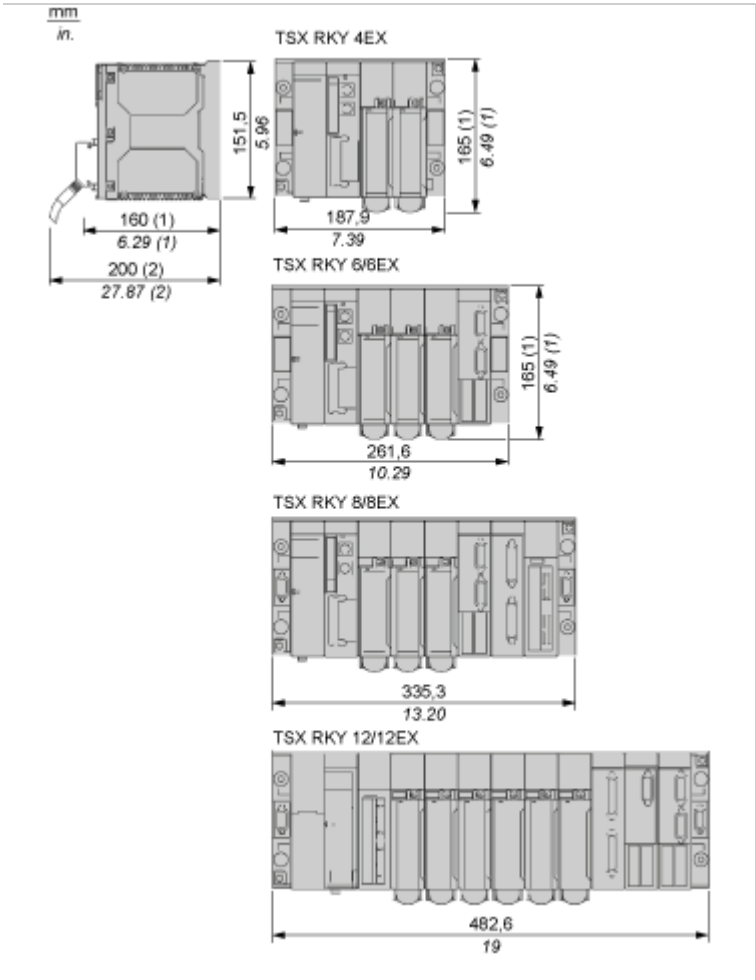
California Proposition 65

WARNING: This product can expose you to chemicals including: Lead and lead compounds which is known to the State of California to cause cancer and birth defects or other reproductive harm. For more information go to www.p65warnings.ca.gov

Dimensions Drawings

Standard and Extendable Racks for Modules Mounting

Dimensions of Modules and Racks

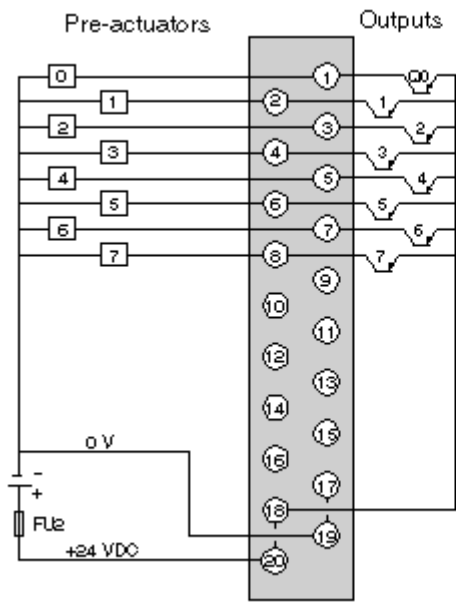


- (1) With screw terminal block modules.
- (2) Maximum depth for all types of modules and their associated connectors.

Connections and Schema

24 Vdc Discrete Transistor Output 8-Channel Module

Wiring Diagram



FU2 6.3 A quick-blow fuse