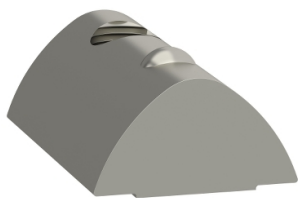


# Product data sheet

Specifications



slot nuts, slot size 8, M6 - 10 pieces

VW33MF010T8N6

Product availability: Non-Stock - Not normally stocked in distribution facility

Price\*: 140.64 USD

## Main

Range Of Product	Lexium linear motion
Product Or Component Type	T-slot nut
Product Specific Application	To mount the axis on fixed support
Accessory / Separate Part Category	Maintenance accessories
Screw Type	M6

## Complementary

Product Compatibility	PAS 44 linear axis 110 x 110 mm TAS 42 linear axis 150 x 54 mm TAS 43 linear axis 200 x 59 mm CAS 44 linear axis 110 x 110 mm
Range Compatibility	Lexium CAS Lexium PAS Lexium TAS
Width	0.31 in (8 mm)

## Ordering and shipping details

Category	US1PC5718233
Discount Schedule	PC57
Gtin	3606485219967
Returnability	No
Country Of Origin	DE

## Packing Units

Unit Type Of Package 1	PCE
Number Of Units In Package 1	1
Package 1 Height	2.56 in (6.5 cm)
Package 1 Width	5.12 in (13.0 cm)
Package 1 Length	7.48 in (19.0 cm)
Package 1 Weight	6.42 oz (182.0 g)
Unit Type Of Package 2	S04
Number Of Units In Package 2	36
Package 2 Height	11.81 in (30.0 cm)
Package 2 Width	15.75 in (40.0 cm)

Price is "List Price" and may be subject to a trade discount – check with your local distributor or retailer for actual price.

Disclaimer: This documentation is not intended as a substitute for and is not to be used for determining suitability or reliability of these products for specific user applications

Package 2 Length	23.62 in (60.0 cm)
Package 2 Weight	17.20 lb(US) (7.804 kg)

## Contractual warranty

Warranty	18 months
----------	-----------

## Sustainability

**Green Premium™ label** is Schneider Electric’s commitment to delivering products with best-in-class environmental performance. Green Premium promises compliance with the latest regulations, transparency on environmental impacts, as well as circular and low-CO<sub>2</sub> products.

**Guide to assessing product sustainability** is a white paper that clarifies global eco-label standards and how to interpret environmental declarations.

[Learn more about Green Premium >](#)

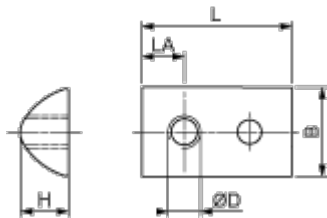
[Guide to assess a product’s sustainability >](#)

## Well-being performance

✓	Reach Free Of Svhc	
✓	Toxic Heavy Metal Free	
✓	Mercury Free	
✓	Rohs Exemption Information	Yes
✓	Pvc Free	
Reach Regulation	<a href="#">REACH Declaration</a>	
Eu Rohs Directive	Pro-active compliance (Product out of EU RoHS legal scope) <a href="#">EU RoHS Declaration</a>	
China Rohs Regulation	<a href="#">China RoHS declaration</a>	
California Proposition 65	WARNING: This product can expose you to chemicals including: Lead and lead compounds, which is known to the State of California to cause cancer and birth defects or other reproductive harm. For more information go to <a href="http://www.P65Warnings.ca.gov">www.P65Warnings.ca.gov</a>	

Dimensions Drawings

Dimensions



Dimensions in mm

B	H	L	LA	ØD
13.8	7.3	23	6.5	M6

Dimensions in in.

B	H	L	LA	ØD
0.54	0.29	0.90	0.25	M6