

Product data sheet

Specifications



Contact block, Harmony XAC, single contact, spring return, front mounting, 40mm horizontal/ 30mm Vertical fixing centres, 2NO

XACS413

Product availability: Non-Stock - Not normally stocked in distribution facility

Price*: 69.00 USD

Main

Range Of Product	Harmony XAC
Product Or Component Type	Contact block
Component Name	XACS
Electrical Circuit Type	Control circuit
Contact Block Type	Single
Type Of Operator	Spring return
Product Compatibility	ZA2B... head XACA
Mechanical Interlocking	Without mechanical interlock
Contacts Type And Composition	2 NO
Mounting Of Block	Front mounting
Contact Operation	Slow-break

Complementary

Connections - Terminals	Screw clamp terminals, 1 x 2.5 mm² with or without cable end Screw clamp terminals, 2 x 1.5 mm² with or without cable end
Horizontal Fixing Centres	1.57 in (40 mm)
Vertical Fixing Centres	1.18 in (30 mm)
Mechanical Durability	1000000 cycles
Contact Code Designation	A300 AC-15, Ue = 240 V, Ie = 3 A IEC 60947-5-1 appendix A Q300 DC-13, Ue = 250 V, Ie = 0.27 A IEC 60947-5-1 appendix A
[Ithe] Conventional Enclosed Thermal Current	10 A
[Ui] Rated Insulation Voltage	500 V 3)IEC 60947-1
[Uimp] Rated Impulse Withstand Voltage	6 kV IEC 60947-1
Maximum Resistance Across Terminals	25 MOhm
Short-Circuit Protection	10 A fuse protection cartridge gG
Rated Operational Power In W	42 W DC-13 1000000 cycles 60 cyc/mn 120 V 0.5 inductive IEC 60947-5-1 appendix C 45 W DC-13 1000000 cycles 60 cyc/mn 48 V 0.5 inductive IEC 60947-5-1 appendix C 60 W DC-13 1000000 cycles 60 cyc/mn 24 V 0.5 inductive IEC 60947-5-1 appendix C

Price is "List Price" and may be subject to a trade discount – check with your local distributor or retailer for actual price.

Disclaimer: This documentation is not intended as a substitute for and is not to be used for determining suitability or reliability of these products for specific user applications

Rated Operational Power In Va	140 VA AC-15 1000000 cycles 60 cyc/mn 24 V 50/60 Hz 0.5 inductive 385 VA AC-15 1000000 cycles 60 cyc/mn 48 V 50/60 Hz 0.5 inductive 455 VA AC-15 1000000 cycles 60 cyc/mn 230 V 50/60 Hz 0.5 inductive 525 VA AC-15 1000000 cycles 60 cyc/mn 127 V 50/60 Hz 0.5 inductive
Terminals Description Iso N°1	(23-24)NO (13-14)NO
Terminal Identifier	(13-14)NO (11-12)NC
Net Weight	0.15 lb(US) (0.07 kg)

Environment

Standards	CSA C22.2 No 14 IEC 60947-5-1 EN 60947-5-1
Ambient Air Temperature For Operation	-13...158 °F (-25...70 °C)
Ambient Air Temperature For Storage	-40...158 °F (-40...70 °C)
Vibration Resistance	15 gn 10...500 Hz)IEC 60068-2-6
Shock Resistance	100 gn IEC 60068-2-27

Ordering and shipping details

Category	US10CS222473
Discount Schedule	0CS2
Gtin	3389110647518
Returnability	No
Country Of Origin	FR

Packing Units

Unit Type Of Package 1	PCE
Number Of Units In Package 1	1
Package 1 Height	3.15 in (8.0 cm)
Package 1 Width	1.18 in (3.0 cm)
Package 1 Length	3.94 in (10.0 cm)
Package 1 Weight	2.47 oz (70.0 g)
Unit Type Of Package 2	S01
Number Of Units In Package 2	30
Package 2 Height	5.91 in (15.0 cm)
Package 2 Width	5.91 in (15.0 cm)
Package 2 Length	15.75 in (40.0 cm)
Package 2 Weight	5.07 lb(US) (2.3 kg)

Contractual warranty

Warranty	18 months
----------	-----------

Sustainability

Green Premium™ label is Schneider Electric's commitment to delivering products with best-in-class environmental performance. Green Premium promises compliance with the latest regulations, transparency on environmental impacts, as well as circular and low-CO₂ products.

Guide to assessing product sustainability is a white paper that clarifies global eco-label standards and how to interpret environmental declarations.

[Learn more about Green Premium >](#)

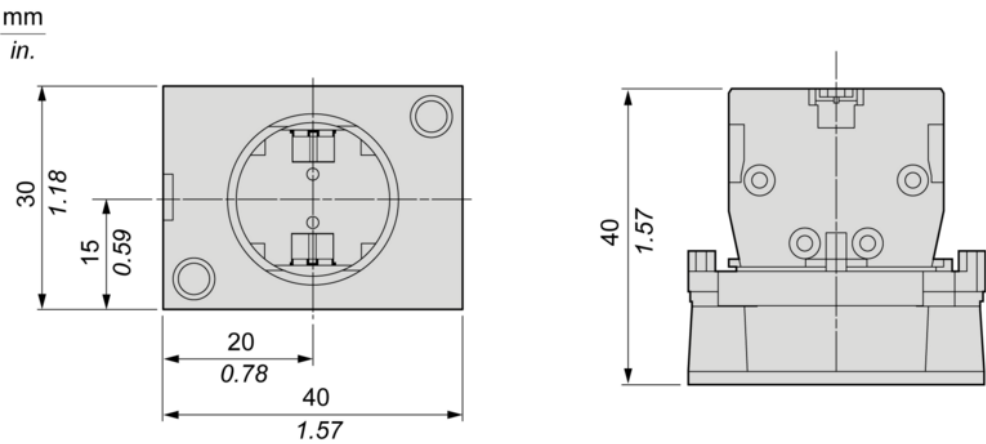
[Guide to assess a product's sustainability >](#)

Well-being performance

✓	Reach Free Of Svhc	
✓	Toxic Heavy Metal Free	
✓	Mercury Free	
✓	Rohs Exemption Information	Yes
Reach Regulation		REACH Declaration
Eu Rohs Directive		Pro-active compliance (Product out of EU RoHS legal scope) EU RoHS Declaration
China Rohs Regulation		China RoHS declaration
Weee		The product must be disposed on European Union markets following specific waste collection and never end up in rubbish bins.
California Proposition 65		WARNING: This product can expose you to chemicals including: Nickel compounds, which is known to the State of California to cause cancer, and Di-isodecyl phthalate (DIDP), which is known to the State of California to cause birth defects or other reproductive harm. For more information go to www.P65Warnings.ca.gov

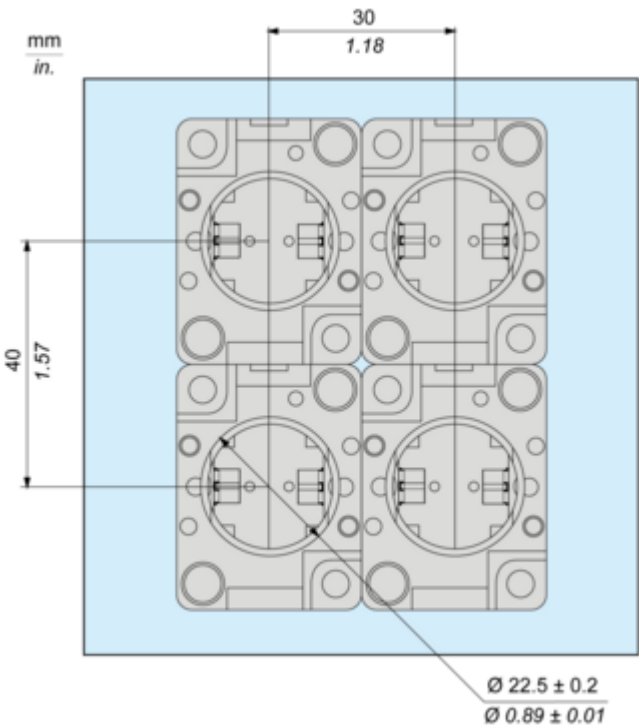
Dimensions Drawings

Dimensions



Mounting and Clearance

Mounting



Performance Curves

Rated Operational Power

AC Supply 50/60 Hz

Operating rate: 3600 operating cycles/hour. Load factor: 0.5.

Power broken in VA for 1 million operating cycles, AC-15 utilization category

Voltage	V	24	48	127	230
Inductive circuit	W	140	385	525	455

DC Supply

Operating rate: 3600 operating cycles/hour. Load factor: 0.5.

Power broken in W for 1 million operating cycles, DC-13 utilization category

Voltage	V	24	48	120
Inductive circuit	W	60	45	42