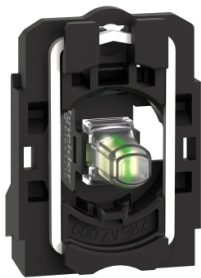


Product data sheet

Specifications



Complete body light block assembly,
Harmony XB5, plastic, universal
LED, body fixing collar, 230...240V
AC

ZB5AVM1

Product availability: Non-Stock - Not normally stocked in
distribution facility

Price*: 57.00 USD

Main

| | |
|-------------------------------|--|
| Range Of Product | Harmony XB5 |
| Product Or Component Type | Complete body/light block assembly |
| Device Short Name | ZB5 |
| Fixing Collar Material | Plastic |
| Sale Per Indivisible Quantity | 1 |
| Connections - Terminals | Screw clamp terminals, <= 2 x 1.5 mm² with cable end IEC 60947-1 Screw clamp terminals, >= 1 x 0.22 mm² without cable end IEC 60947-1 |
| Light Source | Universal LED |
| Bulb Base | Integral LED |
| Light Source Colour | White |

Complementary

| | |
|--|---|
| Cad Overall Width | 1.18 in (30 mm) |
| Cad Overall Height | 1.65 in (42 mm) |
| Cad Overall Depth | 1.26 in (32 mm) |
| Terminals Description Iso N°1 | (X1-X2)PL |
| Net Weight | 0.05 lb(US) (0.022 kg) |
| Tightening Torque | 7.08...10.62 lbf.in (0.8...1.2 N.m) IEC 60947-1 |
| Shape Of Screw Head | Cross Philips no 1 Cross pozidriv No 1 Slotted flat Ø 4 mm Slotted flat Ø 5.5 mm |
| [Ui] Rated Insulation Voltage | 600 V 3)IEC 60947-1 |
| [Uimp] Rated Impulse Withstand Voltage | 6 kV IEC 60947-1 |
| Signalling Type | Steady |
| [Us] Rated Supply Voltage | 230...240 V AC 50/60 Hz |
| Supply Voltage Limits | 195...264 V AC |
| Current Consumption | 14 mA |
| Service Life | 100000 h at rated voltage and 25 °C |
| Surge Withstand | 1 kV IEC 61000-4-5 |

Price is "List Price" and may be subject to a trade discount – check with your local distributor or retailer for actual price.

Disclaimer: This documentation is not intended as a substitute for and is not to be used for determining suitability or reliability of these products for specific user applications

| | |
|---------------------|----------------------|
| Device Presentation | Basic sub-assemblies |
|---------------------|----------------------|

Environment

| | |
|---------------------------------------|--|
| Protective Treatment | TH |
| Ambient Air Temperature For Storage | -40...158 °F (-40...70 °C) |
| Ambient Air Temperature For Operation | -40...158 °F (-40...70 °C) |
| Electrical Shock Protection Class | Class II IEC 60536 |
| Standards | JIS C8201-5-1 IEC 60947-1 CSA C22.2 No 14 IEC 60947-5-4 IEC 60947-5-1 UL 508 JIS C8201-1 |
| Product Certifications | BV DNV LROS (Lloyds register of shipping) CSA GL UL Listed |
| Vibration Resistance | 5 gn 2...500 Hz)IEC 60068-2-6 |
| Shock Resistance | 30 gn 18 ms) half sine wave acceleration IEC 60068-2-27 50 gn 11 ms) half sine wave acceleration IEC 60068-2-27 |
| Resistance To Fast Transients | 2 kV IEC 61000-4-4 |
| Resistance To Electromagnetic Fields | 9.14 V/m (10 V/m) IEC 61000-4-3 |
| Resistance To Electrostatic Discharge | 6 kV on contact (on metal parts) IEC 61000-2-6 8 kV in free air (in insulating parts) IEC 61000-2-6 |
| Electromagnetic Emission | Class B IEC 55011 |

Ordering and shipping details

| | |
|-------------------|---------------|
| Category | US10CS222469 |
| Discount Schedule | 0CS2 |
| Gtin | 3389110907957 |
| Returnability | No |
| Country Of Origin | US |

Packing Units

| | |
|------------------------------|----------------------|
| Unit Type Of Package 1 | PCE |
| Number Of Units In Package 1 | 1 |
| Package 1 Height | 2.20 in (5.600 cm) |
| Package 1 Width | 1.34 in (3.400 cm) |
| Package 1 Length | 2.13 in (5.400 cm) |
| Package 1 Weight | 0.71 oz (20.000 g) |
| Unit Type Of Package 2 | S03 |
| Number Of Units In Package 2 | 200 |
| Package 2 Height | 11.81 in (30.000 cm) |
| Package 2 Width | 11.81 in (30.000 cm) |

| | |
|------------------------------|---------------------------|
| Package 2 Length | 15.75 in (40.000 cm) |
| Package 2 Weight | 10.01 lb(US) (4.540 kg) |
| Unit Type Of Package 3 | P06 |
| Number Of Units In Package 3 | 1600 |
| Package 3 Height | 29.53 in (75.000 cm) |
| Package 3 Width | 23.62 in (60.000 cm) |
| Package 3 Length | 31.50 in (80.000 cm) |
| Package 3 Weight | 110.15 lb(US) (49.964 kg) |

Contractual warranty

| | |
|----------|-----------|
| Warranty | 18 months |
|----------|-----------|

Sustainability

Green Premium™ label is Schneider Electric’s commitment to delivering products with best-in-class environmental performance. Green Premium promises compliance with the latest regulations, transparency on environmental impacts, as well as circular and low-CO₂ products.

Guide to assessing product sustainability is a white paper that clarifies global eco-label standards and how to interpret environmental declarations.

[Learn more about Green Premium >](#)

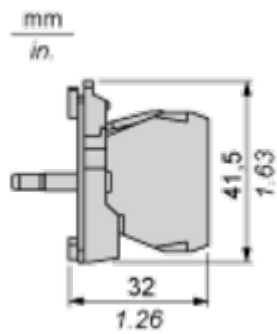
[Guide to assess a product’s sustainability >](#)

Well-being performance

| | |
|--|---|
|  Mercury Free | |
|  Rohs Exemption Information | Yes |
| Reach Regulation | REACH Declaration |
| Eu Rohs Directive | Pro-active compliance (Product out of EU RoHS legal scope) |
| China Rohs Regulation | China RoHS declaration |
| Weee | The product must be disposed on European Union markets following specific waste collection and never end up in rubbish bins. |
| California Proposition 65 | WARNING: This product can expose you to chemicals including: Lead and lead compounds, which is known to the State of California to cause cancer and birth defects or other reproductive harm. For more information go to www.P65Warnings.ca.gov |

Dimensions Drawings

Dimensions



Mounting and Clearance

Panel Cut-out for Pushbuttons, Switches and Pilot Lights (Finished Holes, Ready for Installation)

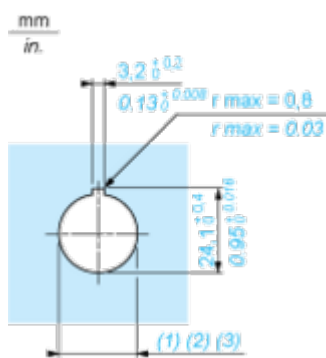
Connection by Screw Clamp Terminals or Plug-in Connectors or on Printed Circuit Board



- (1) Diameter on finished panel or support
(2) For selector switches and Emergency stop buttons, use of an anti-rotation plate type ZB5AZ902 is recommended.
(3) Ø22.5 mm recommended ($\text{Ø}22.3 \begin{smallmatrix} +0.4 \\ 0 \end{smallmatrix}$) / Ø0.89 in. recommended ($\text{Ø}0.88 \text{ in. } \begin{smallmatrix} +0.016 \\ 0 \end{smallmatrix}$)

| Connections | a in mm | a in in. | b in mm | b in in. |
|---|---------|----------|---------|----------|
| By screw clamp terminals or plug-in connector | 40 | 1.57 | 30 | 1.18 |
| By Faston connectors | 45 | 1.77 | 32 | 1.26 |
| On printed circuit board | 30 | 1.18 | 30 | 1.18 |

Detail of Lug Recess



- (1) Diameter on finished panel or support
(2) For selector switches and Emergency stop buttons, use of an anti-rotation plate type ZB5AZ902 is recommended.
(3) Ø22.5 mm recommended ($\text{Ø}22.3 \begin{smallmatrix} +0.4 \\ 0 \end{smallmatrix}$) / Ø0.89 in. recommended ($\text{Ø}0.88 \text{ in. } \begin{smallmatrix} +0.016 \\ 0 \end{smallmatrix}$)