

# Product datasheet

Specifications



## Modular base controller, Modicon TSX Micro, UNI-TELWAY, 14Kwords RAM, 16 discrete inputs

TSX3710128DT1

**Discontinued on:** Jan 23, 2021

**Discontinued**

### Main

Range Of Product	Modicon TSX Micro automation platform
Product Or Component Type	Modular base controller
Primary Voltage	24 V 19.2...30 V DC
Input Current	2 mA 60 A
Immunity To Microbreaks	10 ms

### Complementary

Number Of Slots	2
Module Type	Screw terminal discrete I/O
Discrete Input Number	16 discrete input(s) at 24 V for DC
Discrete Output Number	12 for solid state
Integrated Connection Type	1 serial link Uni-Telway 19.2 kbit/s 1 Modbus Modbus RTU 19.2 kbit/s
Realtime Clock	With
Memory Description	Internal RAM 14 Kwords data Flash 15 Kwords data
Maximum Size Of Object Areas	1 %MWi internal words 256 %Mi 128 %KW constant words
Execution Time Per Instruction	0.25 $\mu$ s Boolean without PCMCIA card 4.81 $\mu$ s arithmetic REAL floating without PCMCIA card
Execution Time For 1 Kinstruction	3.03 100 % Boolean without PCMCIA card 0.25 65 % Boolean and 35 % numerical without PCMCIA card
Application Structure	1 fast task 8 event tasks 1 master task
System Overhead	1.9 ms for master task
Protection Type	Short-circuit Overload protection
Total Useful Secondary Power	16 W
Electromagnetic Compatibility	Electrostatic discharge conforming to IEC 1000-4-2 level 3 Electromagnetic field immunity test conforming to IEC 1000-4-3 level 3 Resistance to fast transient conforming to IEC 1000-4-4 level 3 Immunity to impulse waves conforming to IEC 1000-4-5 Damped oscillatory wave conforming to IEC 1000-4-12 Immunity to electromagnetic interference conforming to IEC 61131-2

Disclaimer: This documentation is not intended as a substitute for and is not to be used for determining suitability or reliability of these products for specific user applications

## Environment

Ambient Air Temperature For Operation	0...60 °C
Ambient Air Temperature For Storage	-25...70 °C
Relative Humidity	10...95 % without condensation for operation 5...95 % without condensation for operation
Operating Altitude	0...2000 m
Width	282.7 mm
Height	151 mm
Depth	152 mm
Net Weight	1.87 kg

## Packing Units

Unit Type Of Package 1	PCE
Number Of Units In Package 1	1
Package 1 Height	15.500 cm
Package 1 Width	16.700 cm
Package 1 Length	18.000 cm
Package 1 Weight	1.825 kg
Unit Type Of Package 2	S04
Number Of Units In Package 2	6
Package 2 Height	30.000 cm
Package 2 Width	40.000 cm
Package 2 Length	60.000 cm
Package 2 Weight	10.962 kg

## Contractual warranty

Warranty	18 months
----------	-----------

# Sustainability

**Green Premium™ label** is Schneider Electric’s commitment to delivering products with best-in-class environmental performance. Green Premium promises compliance with the latest regulations, transparency on environmental impacts, as well as circular and low-CO<sub>2</sub> products.

**Guide to assessing product sustainability** is a white paper that clarifies global eco-label standards and how to interpret environmental declarations.

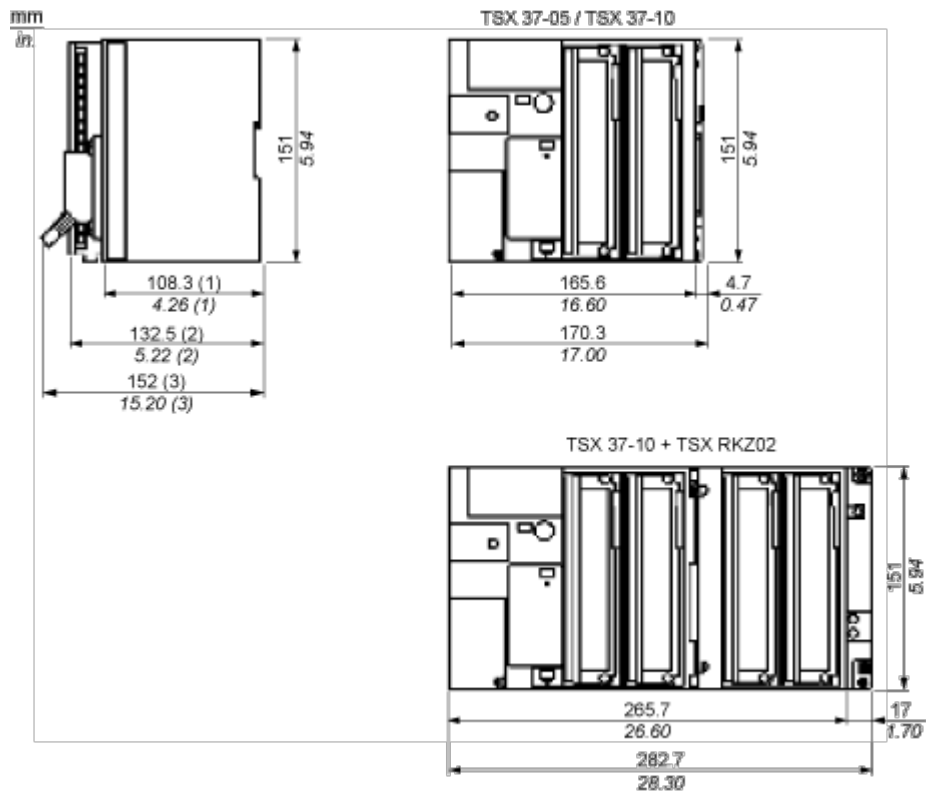
[Learn more about Green Premium >](#)

[Guide to assess a product’s sustainability >](#)

Eu Rohs Directive	Not applicable, out of EU RoHS legal scope
China Rohs Regulation	<a href="#">China RoHS declaration</a>
Weee	The product must be disposed on European Union markets following specific waste collection and never end up in rubbish bins

Dimensions Drawings

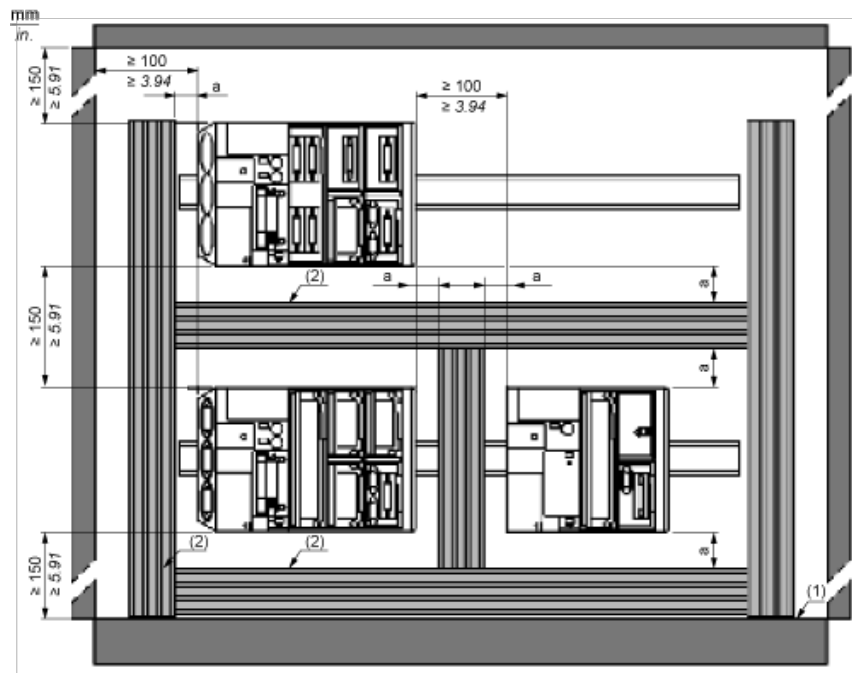
Dimensions



- (1) PLC empty.
- (2) With screw terminal block.
- (3) With HE10 or SubD connector.

Mounting and Clearance

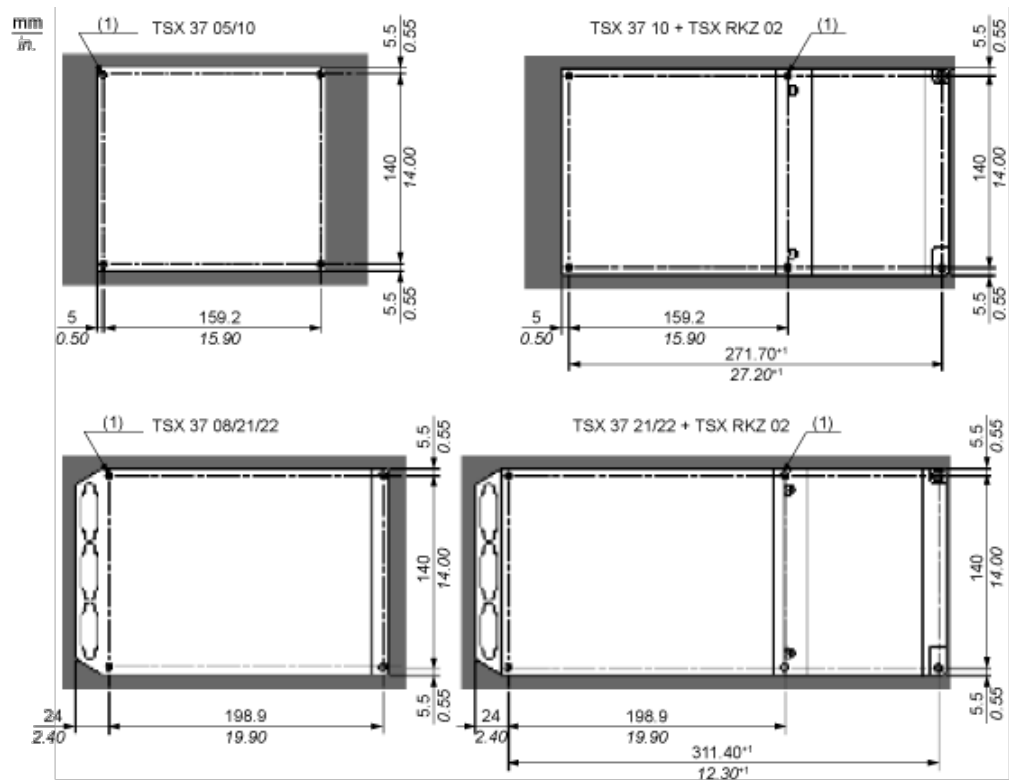
Spacing Requirements



a 50 mm/1.97 in. minimum

- (1) Installation or casing
- (2) Trough or cable tray

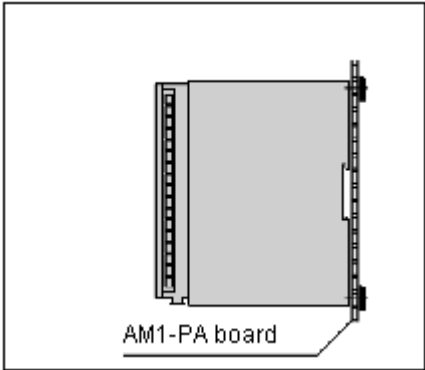
Panel/Board Mounting



Telequick Board Mounting

---

Side View



Use 4 screws with M4x16AF1-VA416 captive washers and 4 M4 AF1-EA4 clip nuts.