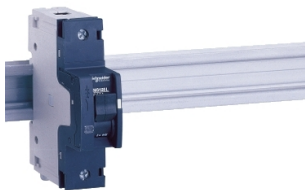


# Product data sheet

Specifications



## Miniature circuit breaker (MCB), Acti9 NG125L, 1P, 50A, D curve, 50kA (IEC/EN 60947-2)

18836

⚠ Discontinued on: Jun 30, 2023

⚠ Discontinued

### Main

Range Of Product	NG125
Range	Acti9
Product Name	Acti9 NG125
Product Or Component Type	Miniature circuit-breaker
Device Short Name	NG125L
Device Application	Distribution
Poles Description	1P
Number Of Protected Poles	1
[In] Rated Current	50 A at 40 °C
Network Type	AC DC
Trip Unit Technology	Thermal-magnetic
Curve Code	D
Breaking Capacity	50 kA Icu at 220...240 V AC 50/60 Hz conforming to EN/IEC 60947-2 100 kA Icu at 110...130 V AC 50/60 Hz conforming to EN/IEC 60947-2 50 kA Icu at 12 V DC conforming to EN/IEC 60947-2 50 kA Icu at 125 V DC conforming to EN/IEC 60947-2 36 kA Icu at <= 144 V DC conforming to EN/IEC 60947-2 12.5 kA Icu at 380...415 V AC 50/60 Hz conforming to EN/IEC 60947-2
Utilisation Category	Category A conforming to IEC 60947-2
Suitability For Isolation	Yes conforming to IEC 60947-2

### Complementary

Network Frequency	50/60 Hz
[Ue] Rated Operational Voltage	380...415 V AC 50/60 Hz 125 V DC <= 144 V DC 12 V DC 220...240 V AC 50/60 Hz 110...130 V AC 50/60 Hz
Magnetic Tripping Limit	12 x In +/- 20 %
[Ics] Rated Service Breaking Capacity	37.5 kA 75 % conforming to EN/IEC 60947-2 - 220...240 V AC 50/60 Hz 75 kA 75 % conforming to EN/IEC 60947-2 - 110...130 V AC 50/60 Hz 9.37 kA 75 % conforming to EN/IEC 60947-2 - 380...415 V AC 50/60 Hz 50 kA 100 % conforming to EN/IEC 60947-2 - 60 V DC 50 kA 100 % conforming to EN/IEC 60947-2 - 125 V DC
[Ui] Rated Insulation Voltage	690 V AC 50/60 Hz conforming to EN/IEC 60947-2

Disclaimer: This documentation is not intended as a substitute for and is not to be used for determining suitability or reliability of these products for specific user applications

[Uimp] Rated Impulse Withstand Voltage	8 kV conforming to EN/IEC 60947-2
Contact Position Indicator	Yes
Control Type	Toggle Manual tripping test
Local Signalling	ON/OFF indication Trip indicator
Mounting Mode	Clip-on
Mounting Support	35 mm symmetrical DIN rail
Mounting Position	Vertical
Comb Busbar And Distribution Block Compatibility	YES
9 Mm Pitches	3
Height	103 mm
Depth	81 mm
Width	27 mm
Net Weight	0.24 kg
Mechanical Durability	20000 cycles
Electrical Durability	10000 cycles
Provision For Padlocking	Padlockable
Locking Options Description	Integrated padlocking
Connections - Terminals	Tunnel type terminals1.5...50 mm² rigid Tunnel type terminals1...35 mm² flexible
Wire Stripping Length	20 mm
Tightening Torque	3.5 N.m
Earth-Leakage Protection	Without

## Environment

Standards	EN/IEC 60947-2
Ip Degree Of Protection	IP20 conforming to IEC 60529
Ik Degree Of Protection	IK05 conforming to EN/IEC 62262
Pollution Degree	3 conforming to IEC 60947-2
Overvoltage Category	IV
Tropicalisation	2 conforming to IEC 60068-1
Relative Humidity	95 % at 55 °C
Operating Altitude	2000 m
Ambient Air Temperature For Operation	-30...70 °C
Ambient Air Temperature For Storage	-40...70 °C

## Packing Units

Unit Type Of Package 1	PCE
Number Of Units In Package 1	1
Package 1 Height	3.0 cm
Package 1 Width	8.0 cm

Package 1 Length	11.0 cm
Package 1 Weight	245.0 g
Unit Type Of Package 2	BB1
Number Of Units In Package 2	12
Package 2 Height	8.8 cm
Package 2 Width	11.6 cm
Package 2 Length	35.6 cm
Package 2 Weight	3.04 kg
Unit Type Of Package 3	S03
Number Of Units In Package 3	72
Package 3 Height	30.0 cm
Package 3 Width	30.0 cm
Package 3 Length	40.0 cm
Package 3 Weight	18.727 kg

## Contractual warranty

Warranty	18 months
----------	-----------

## Sustainability

**Green Premium™ label** is Schneider Electric's commitment to delivering products with best-in-class environmental performance. Green Premium promises compliance with the latest regulations, transparency on environmental impacts, as well as circular and low-CO<sub>2</sub> products.

**Guide to assessing product sustainability** is a white paper that clarifies global eco-label standards and how to interpret environmental declarations.

[Learn more about Green Premium >](#)

[Guide to assess a product's sustainability >](#)



Transparency   RoHS/REACH

## Well-being performance

✓	Reach Free Of Svhc	
✓	Toxic Heavy Metal Free	
✓	Mercury Free	
✓	Rohs Exemption Information	Yes

## Certifications & Standards

Reach Regulation	<a href="#">REACH Declaration</a>
Eu Rohs Directive	Compliant <a href="#">EU RoHS Declaration</a>
China Rohs Regulation	<a href="#">China RoHS declaration</a> Pro-active China RoHS declaration (out of China RoHS legal scope)
Environmental Disclosure	<a href="#">Product Environmental Profile</a>
Weee	The product must be disposed on European Union markets following specific waste collection and never end up in rubbish bins
Circularity Profile	<a href="#">End of Life Information</a>