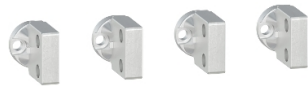


Product data sheet

Specifications



Rear connection replacement kit,
MasterPact NT, ComPacT NS, 4P,
drawout, 630A/1600A, top/bottom
mounting, spare part

33587

Main

Range Of Product	MasterPact NT ComPacT NS630b...1600 new generation
Product Or Component Type	Rear connection
Accessory / Separate Part Category	Connection accessory
Range Compatibility	Masterpact MasterPact NT ComPact ComPact NS630b...1600
Poles Description	4P
Mounting Mode	Drawout
[In] Rated Current	630...1600 A

Complementary

Location Of Connection	Rear
Localisation On Device	Top Bottom
Connection Position	Horizontal Vertical
Connection Pitch	70 mm
Quantity Per Set	4
Accessory / Separate Part Category	Spare part

Packing Units

Unit Type Of Package 1	PCE
Number Of Units In Package 1	1
Package 1 Height	1.5 cm
Package 1 Width	4.5 cm
Package 1 Length	6 cm
Package 1 Weight	1.506 kg

Contractual warranty

Warranty	18 months
----------	-----------

Disclaimer: This documentation is not intended as a substitute for and is not to be used for determining suitability or reliability of these products for specific user applications

Sustainability

Green Premium™ label is Schneider Electric's commitment to delivering products with best-in-class environmental performance. Green Premium promises compliance with the latest regulations, transparency on environmental impacts, as well as circular and low-CO₂ products.

Guide to assessing product sustainability is a white paper that clarifies global eco-label standards and how to interpret environmental declarations.

[Learn more about Green Premium >](#)

[Guide to assess a product's sustainability >](#)

Well-being performance

✓	Reach Free Of Svhc	
✓	Toxic Heavy Metal Free	
✓	Mercury Free	
✓	Rohs Exemption Information	Yes
Reach Regulation		REACH Declaration
Eu Rohs Directive		Pro-active compliance (Product out of EU RoHS legal scope) EU RoHS Declaration
China Rohs Regulation		China RoHS declaration