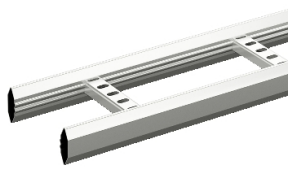


# Product data sheet

Specifications



## Wibe - cable ladder - KHZP-150 - stainless steel AISI 316L - 6 m

727382

 **Discontinued on:** Jan 3, 2022

 **Discontinued**

**Important message:** This product belongs to Cable Support which is no longer commercialized by Schneider Electric. As per the first of January 2022 the commercialization is managed by Wibe-Group, Please follow the link [www.wibe-group.com](http://www.wibe-group.com) for further details.

### Main

Range	Wibe
Product Name	Wibe Cable Ladders
Product Or Component Type	Cable ladder
Device Short Name	KHZP
Device Application	Industrial application

### Complementary

Type Of Side Profile	Closed profile
Type Of Rung	Perforated profile
Mounting Location	Outdoor Indoor
Rung Spacing	250 mm
Material With Surface Treatment	Stainless steel AISI 316L
Corrosion Class	C5-M
Height	55 mm
Width	150 mm
Length	6 m
Net Weight	260 kg / 100 m

### Environment

Mounting Location	Area with almost permanent high levels of humidity, airborne pollution and salt purifying plants and offshore
Standards	IEC 61537

### Packing Units

Unit Type Of Package 1	PCE
Number Of Units In Package 1	1
Package 1 Height	5.5 cm
Package 1 Width	15 cm
Package 1 Length	100 cm

Disclaimer: This documentation is not intended as a substitute for and is not to be used for determining suitability or reliability of these products for specific user applications

Package 1 Weight	2.333 kg
------------------	----------

## Contractual warranty

Warranty	18 months
----------	-----------

## Sustainability

**Green Premium™ label** is Schneider Electric's commitment to delivering products with best-in-class environmental performance. Green Premium promises compliance with the latest regulations, transparency on environmental impacts, as well as circular and low-CO<sub>2</sub> products.

**Guide to assessing product sustainability** is a white paper that clarifies global eco-label standards and how to interpret environmental declarations.

[Learn more about Green Premium >](#)

[Guide to assess a product's sustainability >](#)



Transparency   RoHS/REACH

## Well-being performance

✓ Reach Free Of Svhc

✓ Toxic Heavy Metal Free

✓ Mercury Free

✓ Rohs Exemption Information   Yes

## Certifications & Standards

Reach Regulation	<a href="#">REACH Declaration</a>
Eu Rohs Directive	Pro-active compliance (Product out of EU RoHS legal scope) <a href="#">EU RoHS Declaration</a>
China Rohs Regulation	<a href="#">China RoHS declaration</a> Pro-active China RoHS declaration (out of China RoHS legal scope)
Environmental Disclosure	<a href="#">Product Environmental Profile</a>
Circularity Profile	No need of specific recycling operations