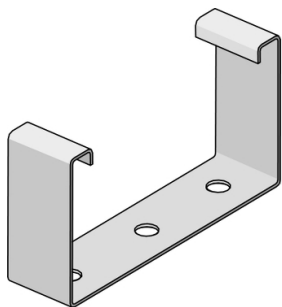


Product data sheet

Specifications



Wibe - luminaire bracket W25/40-400 - steel pre-galvanized white

729189

⚠ Discontinued on: Jan 3, 2022

⚠ Discontinued

Important message: This product belongs to Cable Support which is no longer commercialized by Schneider Electric. As per the first of January 2022 the commercialization is managed by Wibe-Group, Please follow the link www.wibe-group.com for further details.

Main

Range	Wibe
Range Of Product	Wibe Cable Trays
Product Or Component Type	Luminaire bracket
Device Short Name	W25
Mounting Location	Partly outdoor environment with low exposure to corrosion ware-houses and parking garages

Complementary

Product Destination	Cable tray H= 40 mm W= 400 mm
Material With Surface Treatment	Steel, pre-galvanized white
Corrosion Class	C2
Height	62 mm
Width	401 mm
Depth	30 mm
Net Weight	23 kg / set of 100

Packing Units

Unit Type Of Package 1	PCE
Number Of Units In Package 1	1
Package 1 Height	6.2 cm
Package 1 Width	4.2 cm
Package 1 Length	40.2 cm
Package 1 Weight	200 g

Contractual warranty

Warranty	18 months
----------	-----------

Disclaimer: This documentation is not intended as a substitute for and is not to be used for determining suitability or reliability of these products for specific user applications

Sustainability

Green Premium™ label is Schneider Electric’s commitment to delivering products with best-in-class environmental performance. Green Premium promises compliance with the latest regulations, transparency on environmental impacts, as well as circular and low-CO₂ products.

Guide to assessing product sustainability is a white paper that clarifies global eco-label standards and how to interpret environmental declarations.

[Learn more about Green Premium >](#)

[Guide to assess a product’s sustainability >](#)



Transparency RoHS/REACH

Well-being performance

✓ Reach Free Of Svhc

✓ Toxic Heavy Metal Free

✓ Mercury Free

✓ Rohs Exemption Information Yes

Certifications & Standards

Reach Regulation	REACH Declaration
Eu Rohs Directive	Pro-active compliance (Product out of EU RoHS legal scope) EU RoHS Declaration
China Rohs Regulation	China RoHS declaration Pro-active China RoHS declaration (out of China RoHS legal scope)
Environmental Disclosure	Product Environmental Profile
Circularity Profile	No need of specific recycling operations