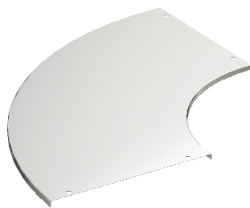


Product data sheet

Specifications



Wibe - cover 90° bend 15-600 - steel hot-dip galvanized

781438

 **Discontinued on:** Jan 3, 2022

 **Discontinued**

Important message: This product belongs to Cable Support which is no longer commercialized by Schneider Electric. As per the first of January 2022 the commercialization is managed by Wibe-Group, Please follow the link www.wibe-group.com for further details.

Main

| | |
|---------------------------|--|
| Range | Wibe |
| Product | Wibe Cable Ladders |
| Product Or Component Type | Cover |
| Mounting Location | Area with high level of environmental corrosion, humidity and airborne pollution industrial and coastal areas, chemical plants |

Complementary

| | |
|---------------------------------|--------------------------------|
| Product Destination | 600 mm width 90° interior bend |
| Material With Surface Treatment | Steel, hot-dip galvanized |
| Corrosion Class | C3/C4 |
| Length | 870 mm |
| Height | 10 mm |
| Width | 870 mm |
| Net Weight | 390 kg / set of 100 |

Packing Units

| | |
|------------------------------|---------|
| Unit Type Of Package 1 | PCE |
| Number Of Units In Package 1 | 1 |
| Package 1 Height | 1.1 cm |
| Package 1 Width | 60.2 cm |
| Package 1 Length | 85 cm |
| Package 1 Weight | 4.7 kg |

Contractual warranty

| | |
|----------|-----------|
| Warranty | 18 months |
|----------|-----------|

Disclaimer: This documentation is not intended as a substitute for and is not to be used for determining suitability or reliability of these products for specific user applications

Sustainability

Green Premium™ label is Schneider Electric’s commitment to delivering products with best-in-class environmental performance. Green Premium promises compliance with the latest regulations, transparency on environmental impacts, as well as circular and low-CO₂ products.

Guide to assessing product sustainability is a white paper that clarifies global eco-label standards and how to interpret environmental declarations.

[Learn more about Green Premium >](#)

[Guide to assess a product’s sustainability >](#)



Transparency RoHS/REACH

Well-being performance

| | | |
|---|----------------------------|-----|
| ✓ | Reach Free Of Svhc | |
| ✓ | Toxic Heavy Metal Free | |
| ✓ | Mercury Free | |
| ✓ | Rohs Exemption Information | Yes |

Certifications & Standards

| | |
|--------------------------|---|
| Reach Regulation | REACH Declaration |
| Eu Rohs Directive | Pro-active compliance (Product out of EU RoHS legal scope) EU RoHS Declaration |
| China Rohs Regulation | China RoHS declaration Pro-active China RoHS declaration (out of China RoHS legal scope) |
| Environmental Disclosure | Product Environmental Profile |
| Circularity Profile | No need of specific recycling operations |