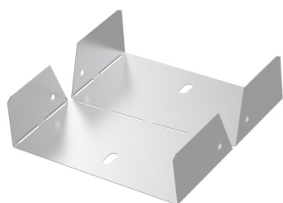



Product data sheet

Specifications



Wibe - vertical riser W11/60-150 - steel pre-galvanized

782278

 **Discontinued on:** Dec 12, 2018

 **Discontinued**

Main

Range	Wibe
Range Of Product	Wibe Cable Trays
Device Short Name	W11
Product Or Component Type	Riser
Mounting Location	Partly outdoor environment with low exposure to corrosion ware-houses and parking garages

Complementary

Operating Angle	0...90 °
Direction Change Type	Vertical
Product Destination	Cable tray H= 60 mm W= 150 mm
Mounting Mode	Push-in
Fixing Mode	By bolt By locking plug
Material With Surface Treatment	Steel, pre-galvanized
Corrosion Class	C2
Width	147 mm
Depth	150 mm
Net Weight	19 kg / set of 100

Packing Units

Unit Type Of Package 1	PCE
Number Of Units In Package 1	1
Package 1 Height	0.1 cm
Package 1 Width	15 cm
Package 1 Length	35 cm
Package 1 Weight	190 g

Contractual warranty

Warranty	18 months
----------	-----------

Disclaimer: This documentation is not intended as a substitute for and is not to be used for determining suitability or reliability of these products for specific user applications