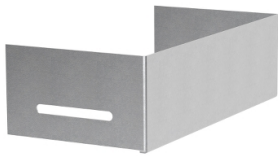


Product data sheet

Specifications



Wibe - end cover W45/60-500 - steel pre-galvanized

782297

⚠ Discontinued on: Dec 12, 2018

⚠ Discontinued

Main

Range	Wibe
Range Of Product	Wibe Cable Trays
Product Or Component Type	End cover
Device Short Name	W45
Mounting Location	Partly outdoor environment with low exposure to corrosion ware-houses and parking garages

Complementary

Product Destination	Cable tray H= 60 mm W= 500 mm
Mounting Mode	Push-in
Fixing Mode	By bolt By locking plug
Material With Surface Treatment	Steel, pre-galvanized
Corrosion Class	C2
Height	58 mm
Width	498 mm
Depth	100 mm
Net Weight	34 kg / set of 100

Packing Units

Unit Type Of Package 1	PCE
Number Of Units In Package 1	1
Package 1 Weight	0.34 g

Contractual warranty

Warranty	18 months
----------	-----------

Disclaimer: This documentation is not intended as a substitute for and is not to be used for determining suitability or reliability of these products for specific user applications