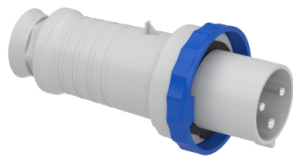


Product data sheet

Specifications



Wander plug, Mureva PK, 63A, 2P+E, 220V, IP67

81378

Main

Range	Mureva
Product Or Component Type	Wander plug
Device Short Name	Mureva plug
Plug, Socket Category	Low voltage
Poles Description	2P + E
Network Type	AC
Outlet Standard	Industrial

Complementary

Plug, Socket, Control Station Shape	Straight
[In] Rated Current	63 A
[Ue] Rated Operational Voltage	200...250 V
Network Frequency	50/60 Hz
Ground Lug Clockwise Position	6 h
Plug, Socket Material	Housing: self-extinguishing engineering polymer
Contacts Material	Pins: nickel plated brass
Connections - Terminals	Captive screws
Cable Cross Section	6...25 mm²
Cable Outer Diameter	17...31 mm
Cable Entry	Cable gland
Thread Type	Pg 36
Net Weight	0.672 kg
Height	265 mm
Width	110 mm
Depth	110 mm
Colour	Grey (RAL 7035)
Voltage Colour	Blue

Environment

Standards	IEC 60309-2 IEC 60309-1
Ip Degree Of Protection	IP67 conforming to IEC 60529

Disclaimer: This documentation is not intended as a substitute for and is not to be used for determining suitability or reliability of these products for specific user applications

Ik Degree Of Protection	IK08 conforming to EN 62262
Fire Resistance	850 °C conforming to IEC 60695-2-11
Relative Humidity	50 % at 40 °C 70 % at 30 °C 90 % at 20 °C
Operating Altitude	2000 m
Ambient Air Temperature For Operation	35 °C (86400 s) -25...40 °C

Packing Units

Unit Type Of Package 1	PCE
Number Of Units In Package 1	1
Package 1 Height	11.3 cm
Package 1 Width	11.4 cm
Package 1 Length	25.5 cm
Package 1 Weight	680.0 g
Unit Type Of Package 2	S03
Number Of Units In Package 2	10
Package 2 Height	30.0 cm
Package 2 Width	30.0 cm
Package 2 Length	40.0 cm
Package 2 Weight	7.287 kg

Contractual warranty

Warranty	18 months
----------	-----------

Sustainability

Green Premium™ label is Schneider Electric's commitment to delivering products with best-in-class environmental performance. Green Premium promises compliance with the latest regulations, transparency on environmental impacts, as well as circular and low-CO₂ products.

Guide to assessing product sustainability is a white paper that clarifies global eco-label standards and how to interpret environmental declarations.


[Learn more about Green Premium >](#)

[Guide to assess a product's sustainability >](#)



Transparency RoHS/REACH

Well-being performance

 Rohs Exemption Information [Yes](#)

Certifications & Standards

Reach Regulation	REACH Declaration
Eu Rohs Directive	Compliant with Exemptions
China Rohs Regulation	China RoHS declaration Product out of China RoHS scope. Substance declaration for your information
Environmental Disclosure	Product Environmental Profile
Circularity Profile	No need of specific recycling operations