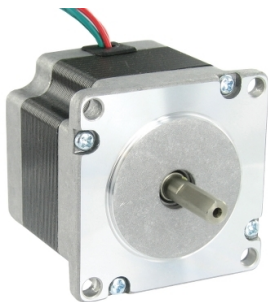


Product data sheet

Specifications



2-phase stepper motor - 1.02 N.m -
shaft Ø6.35 mm - L=54mm - without
brake- 2.4A

BRS2572A240

Main

Range Compatibility	Lexium SD2
Product Or Component Type	Motion control motor
Device Short Name	BRS2
Motor Type	2-phase stepper motor

Complementary

Maximum Mechanical Speed	1800 rpm
Supply Voltage Limits	12...48 V DC
Mounting Support	Flange
Motor Flange Size	56.4 mm
Length	54 mm
Number Of Motor Stacks	2
Centring Collar Diameter	38 mm
Centring Collar Depth	1.6 mm
Number Of Mounting Holes	4
Mounting Holes Diameter	5 mm
Circle Diameter Of The Mounting Holes	66.6 mm
Electrical Connection	Flying lead
Holding Brake	Without
Shaft End	Smooth shaft
Second Shaft	Without second shaft end
Shaft Diameter	6.35 mm
Shaft Length	19 mm
Holding Torque	1.02 N.m
Rotor Inertia	0.26 kg.cm²
Resolution	200 steps number of full steps per revolution 1.8 ° step angle
[In] Rated Current	2.4 A
Resistance	1.2 Ohm (winding)

Environment

Ambient Air Temperature For Operation	-25...40 °C
---------------------------------------	-------------

Disclaimer: This documentation is not intended as a substitute for and is not to be used for determining suitability or reliability of these products for specific user applications

Ambient Air Temperature For Storage	-25...70 °C
Operating Altitude	<= 1000 m without power derating
Relative Humidity	15...85 % without condensation
Ip Degree Of Protection	IP20 conforming to IEC/EN 60034-1
Temperature Class	B winding conforming to IEC/EN 60034-1

Packing Units

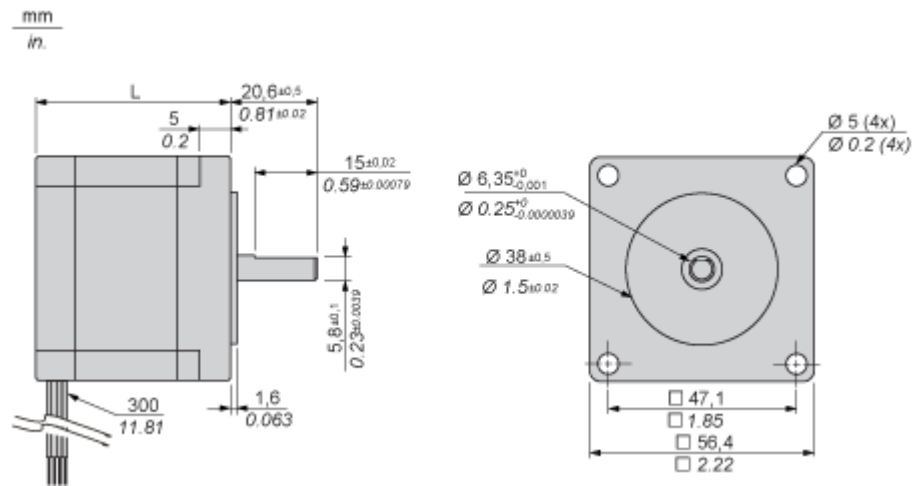
Unit Type Of Package 1	PCE
Number Of Units In Package 1	1
Package 1 Height	20.0 cm
Package 1 Width	29.2 cm
Package 1 Length	38.2 cm
Package 1 Weight	722.0 g
Unit Type Of Package 2	CAR
Number Of Units In Package 2	16
Package 2 Height	20.0 cm
Package 2 Width	29.2 cm
Package 2 Length	38.2 cm
Package 2 Weight	11.567 kg
Unit Type Of Package 3	S06
Number Of Units In Package 3	64
Package 3 Height	73.5 cm
Package 3 Width	60.0 cm
Package 3 Length	80.0 cm
Package 3 Weight	59.268 kg

Contractual warranty

Warranty	18 months
----------	-----------

Dimensions Drawings

Dimensions



Dimensions in mm

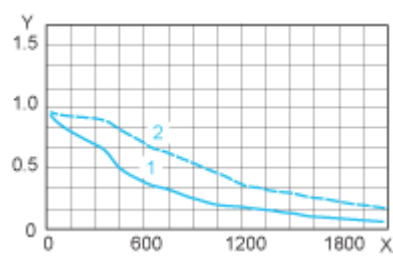
L
54

Dimensions in in.

L
2.13

Performance Curves

Torque Characteristics



X : Speed of rotation in rpm

Y : Torque in Nm

1 : 24 VDC

2 : 48 VDC