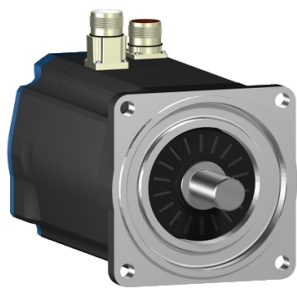


Product data sheet

Specifications



AC servo motor BSH, Lexium 05,
7.76N.m, 2000rpm, untapped shaft,
with brake, IP50

BSH1003M01F1A

ⓘ Discontinued

Main

Product Or Component Type	Servo motor
Device Short Name	BSH
Maximum Mechanical Speed	6000 rpm
Continuous Stall Torque	7.76 N.m for LXM15LD10N4, 400 V, three phase 7.76 N.m for LXM15LD17N4, 230 V, three phase 7.76 N.m for LXM15LD17N4, 400 V, three phase 7.76 N.m for LXM15LD17N4, 480 V, three phase 7.8 N.m for LXM05AD22N4, 380...480 V, three phase 7.8 N.m for LXM05BD22N4, 380...480 V, three phase 7.8 N.m for LXM05CD22N4, 380...480 V, three phase
Peak Stall Torque	15.19 N.m for LXM15LD10N4, 400 V, three phase 22.95 N.m for LXM15LD17N4, 230 V, three phase 22.95 N.m for LXM15LD17N4, 400 V, three phase 22.95 N.m for LXM15LD17N4, 480 V, three phase 23.17 N.m for LXM05AD22N4, 380...480 V, three phase 23.17 N.m for LXM05BD22N4, 380...480 V, three phase 23.17 N.m for LXM05CD22N4, 380...480 V, three phase
Nominal Output Power	1400 W for LXM15LD17N4, 480 V, three phase 750 W for LXM15LD17N4, 230 V, three phase 1300 W for LXM15LD10N4, 400 V, three phase 1100 W for LXM05AD22N4, 380...480 V, three phase 1100 W for LXM05BD22N4, 380...480 V, three phase 1100 W for LXM05CD22N4, 380...480 V, three phase 1400 W for LXM15LD17N4, 400 V, three phase
Nominal Torque	6.36 N.m for LXM15LD10N4, 400 V, three phase 6.5 N.m for LXM15LD17N4, 400 V, three phase 6.5 N.m for LXM15LD17N4, 480 V, three phase 6.73 N.m for LXM05AD22N4, 380...480 V, three phase 6.73 N.m for LXM05BD22N4, 380...480 V, three phase 6.73 N.m for LXM05CD22N4, 380...480 V, three phase 7 N.m for LXM15LD17N4, 230 V, three phase
Nominal Speed	1000 rpm for LXM15LD17N4, 230 V, three phase 1500 rpm for LXM05AD22N4, 380...480 V, three phase 1500 rpm for LXM05BD22N4, 380...480 V, three phase 1500 rpm for LXM05CD22N4, 380...480 V, three phase 2000 rpm for LXM15LD10N4, 400 V, three phase 2000 rpm for LXM15LD17N4, 400 V, three phase 2000 rpm for LXM15LD17N4, 480 V, three phase
Product Compatibility	LXM15LD10N4 at 400 V three phase LXM15LD17N4 at 230 V three phase LXM05AD22N4 at 380...480 V three phase LXM05BD22N4 at 380...480 V three phase LXM05CD22N4 at 380...480 V three phase LXM15LD17N4 at 400 V three phase LXM15LD17N4 at 480 V three phase
Shaft End	Untapped
Ip Degree Of Protection	IP50 standard
Speed Feedback Resolution	131072 points/turn

Disclaimer: This documentation is not intended as a substitute for and is not to be used for determining suitability or reliability of these products for specific user applications

Holding Brake	With
Mounting Support	International standard flange
Electrical Connection	Straight connectors

Complementary

Range Compatibility	Lexium 05 Lexium 15
Supply Voltage Max	480 V
Network Number Of Phases	Three phase
Continuous Stall Current	3.4 A
Maximum Continuous Power	3.14 W
Maximum Current Irms	15.6 A for LXM15LD10N4 15.6 A for LXM15LD17N4 14.7 A for LXM05AD22N4 14.7 A for LXM05BD22N4 14.7 A for LXM05CD22N4
Maximum Permanent Current	14.7 A
Switching Frequency	4 kHz
Second Shaft	Without second shaft end
Shaft Diameter	19 mm
Shaft Length	40 mm
Feedback Type	Single turn SinCos Hiperface
Holding Torque	9 N.m holding brake
Motor Flange Size	100 mm
Torque Constant	2.22 N.m/A at 120 °C
Back Emf Constant	1.44 V/krpm at 120 °C 148 V/krpm at 120 °C
Number Of Motor Poles	8
Rotor Inertia	3.838 kg.cm²
Stator Resistance	5.3 Ohm at 20 °C
Stator Inductance	32.5 mH at 20 °C 33.7 mH at 20 °C
Stator Electrical Time Constant	6.13 ms at 20 °C 6.36 ms at 20 °C
Maximum Radial Force Fr	1050 N at 1000 rpm 660 N at 4000 rpm 730 N at 3000 rpm 830 N at 2000 rpm
Maximum Axial Force Fa	0.2 x Fr
Brake Pull-In Power	18 W
Type Of Cooling	Natural convection
Length	271.5 mm
Centring Collar Diameter	95 mm
Centring Collar Depth	3.5 mm
Number Of Mounting Holes	4
Mounting Holes Diameter	9 mm

Circle Diameter Of The Mounting Holes	115 mm
Net Weight	8 kg

Packing Units

Unit Type Of Package 1	PCE
Number Of Units In Package 1	1

Contractual warranty

Warranty	18 months
----------	-----------

Sustainability

Green Premium™ label is Schneider Electric's commitment to delivering products with best-in-class environmental performance. Green Premium promises compliance with the latest regulations, transparency on environmental impacts, as well as circular and low-CO₂ products.

Guide to assessing product sustainability is a white paper that clarifies global eco-label standards and how to interpret environmental declarations.

[Learn more about Green Premium >](#)

[Guide to assess a product's sustainability >](#)



Transparency RoHS/REACH

Well-being performance

✓ Mercury Free

✓ Rohs Exemption Information [Yes](#)

✓ Pvc Free

Certifications & Standards

Reach Regulation	REACH Declaration
Eu Rohs Directive	Pro-active compliance (Product out of EU RoHS legal scope)
China Rohs Regulation	China RoHS declaration
Environmental Disclosure	Product Environmental Profile
Weee	The product must be disposed on European Union markets following specific waste collection and never end up in rubbish bins
Circularity Profile	No need of specific recycling operations
California Proposition 65	WARNING: This product can expose you to chemicals including: Lead and lead compounds, which is known to the State of California to cause cancer and birth defects or other reproductive harm. For more information go to www.P65Warnings.ca.gov