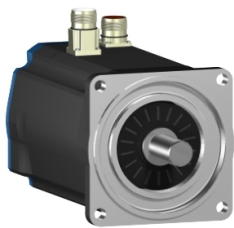


# Product data sheet

Specifications



AC servo motor BSH, Lexium 05,  
19.5N.m, 1500rpm, keyed shaft,  
without brake, IP50

BSH1402M12A1A

ⓘ Discontinued

## Main

Product Or Component Type	Servo motor
Device Short Name	BSH
Maximum Mechanical Speed	4000 rpm
Continuous Stall Torque	19.5 N.m for LXM15MD40N4, 400 V, three phase 19.5 N.m for LXM15MD40N4, 480 V, three phase 19.2 N.m for LXM05AD34N4, 380...480 V, three phase 19.2 N.m for LXM05BD34N4, 380...480 V, three phase 19.2 N.m for LXM05CD34N4, 380...480 V, three phase
Peak Stall Torque	47.5 N.m for LXM15MD40N4, 400 V, three phase 47.5 N.m for LXM15MD40N4, 480 V, three phase 47.5 N.m for LXM05AD34N4, 380...480 V, three phase 47.5 N.m for LXM05BD34N4, 380...480 V, three phase 47.5 N.m for LXM05CD34N4, 380...480 V, three phase
Nominal Output Power	2350 W for LXM05AD34N4, 380...480 V, three phase 2350 W for LXM05BD34N4, 380...480 V, three phase 2350 W for LXM05CD34N4, 380...480 V, three phase 2350 W for LXM15MD40N4, 400 V, three phase 2350 W for LXM15MD40N4, 480 V, three phase
Nominal Torque	15 N.m for LXM05AD34N4, 380...480 V, three phase 15 N.m for LXM05BD34N4, 380...480 V, three phase 15 N.m for LXM05CD34N4, 380...480 V, three phase 15 N.m for LXM15MD40N4, 400 V, three phase 15 N.m for LXM15MD40N4, 480 V, three phase
Nominal Speed	1500 rpm for LXM15MD40N4, 400 V, three phase 1500 rpm for LXM05AD34N4, 380...480 V, three phase 1500 rpm for LXM05BD34N4, 380...480 V, three phase 1500 rpm for LXM05CD34N4, 380...480 V, three phase 1500 rpm for LXM15MD40N4, 480 V, three phase
Product Compatibility	LXM05AD34N4 at 380...480 V three phase LXM05BD34N4 at 380...480 V three phase LXM05CD34N4 at 380...480 V three phase LXM15MD40N4 at 400 V three phase LXM15MD40N4 at 480 V three phase
Shaft End	Keyed
Ip Degree Of Protection	IP50 standard
Speed Feedback Resolution	131072 points/turn x 4096 turns
Holding Brake	Without
Mounting Support	International standard flange
Electrical Connection	Straight connectors

## Complementary

Disclaimer: This documentation is not intended as a substitute for and is not to be used for determining suitability or reliability of these products for specific user applications

Range Compatibility	Lexium 05 Lexium 15
Supply Voltage Max	480 V
Network Number Of Phases	Three phase
Continuous Stall Current	6.7 A
Maximum Continuous Power	5.5 W
Maximum Current Irms	22.4 A for LXM15MD40N4 22.4 A for LXM05AD34N4 22.4 A for LXM05BD34N4 22.4 A for LXM05CD34N4
Maximum Permanent Current	22.4 A
Switching Frequency	4 kHz
Second Shaft	Without second shaft end
Shaft Diameter	24 mm
Shaft Length	50 mm
Key Width	40 mm
Feedback Type	Multiturn SinCos Hiperface
Motor Flange Size	140 mm
Torque Constant	2.91 N.m/A at 120 °C
Back Emf Constant	199 V/krpm at 120 °C
Number Of Motor Poles	10
Rotor Inertia	12.68 kg.cm²
Stator Resistance	2.3 Ohm at 20 °C 2.32 Ohm at 20 °C
Stator Inductance	28.6 mH at 20 °C 29.79 mH at 20 °C
Stator Electrical Time Constant	12.33 ms at 20 °C 12.85 ms at 20 °C
Maximum Radial Force Fr	1680 N at 3000 rpm 1930 N at 2000 rpm 2430 N at 1000 rpm
Maximum Axial Force Fa	0.2 x Fr
Type Of Cooling	Natural convection
Length	272.5 mm
Centring Collar Diameter	130 mm
Centring Collar Depth	3.5 mm
Number Of Mounting Holes	4
Mounting Holes Diameter	11 mm
Circle Diameter Of The Mounting Holes	165 mm
Net Weight	16.6 kg

## Packing Units

Unit Type Of Package 1	PCE
Number Of Units In Package 1	1

# Contractual warranty

Warranty	18 months
----------	-----------