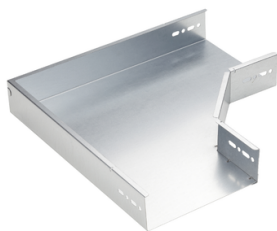


Product data sheet

Specifications



Stago - horizontal bend 90° formed 60x120mm pre-galvanized RAL9016

CSU0861209916

 **Discontinued on:** Jan 3, 2022

 **Discontinued**

Important message: This product belongs to Cable Support which is no longer commercialized by Schneider Electric. As per the first of January 2022 the commercialization is managed by Wibe-Group, Please follow the link www.wibe-group.com for further details.

Main

Range Of Product	Stago
Range	Stago
Product Or Component Type	Bend
Device Application	Cable management

Complementary

Operating Angle	90 °
Direction Change Type	Horizontal
Inner Radius	100 mm
Adjustment	Fixed
Product Destination	Cable tray KG281 H= 60 mm W= 120 mm
Fixing Mode	By screw
Shape	Bended
Material With Surface Treatment	Stainless steel pre-galvanized, RAL 9016
Corrosion Class	C2
Thickness	1 mm
Net Weight	0.902 kg

Environment

Mounting Location	Partly outdoor environment with low exposure to corrosion ware-houses and parking garages
-------------------	---

Packing Units

Unit Type Of Package 1	PCE
Number Of Units In Package 1	1
Package 1 Height	6.2 cm
Package 1 Width	32.3 cm
Package 1 Length	32.3 cm
Package 1 Weight	902 g

Disclaimer: This documentation is not intended as a substitute for and is not to be used for determining suitability or reliability of these products for specific user applications

Sustainability

Green Premium™ label is Schneider Electric's commitment to delivering products with best-in-class environmental performance. Green Premium promises compliance with the latest regulations, transparency on environmental impacts, as well as circular and low-CO₂ products.

Guide to assessing product sustainability is a white paper that clarifies global eco-label standards and how to interpret environmental declarations.

[Learn more about Green Premium >](#)

[Guide to assess a product's sustainability >](#)



Transparency RoHS/REACH

Well-being performance

✓ Reach Free Of Svhc

✓ Toxic Heavy Metal Free

✓ Mercury Free

✓ Rohs Exemption Information Yes

Certifications & Standards

Reach Regulation	REACH Declaration
Eu Rohs Directive	Pro-active compliance (Product out of EU RoHS legal scope) EU RoHS Declaration
China Rohs Regulation	China RoHS declaration Pro-active China RoHS declaration (out of China RoHS legal scope)
Environmental Disclosure	Product Environmental Profile
Circularity Profile	No need of specific recycling operations