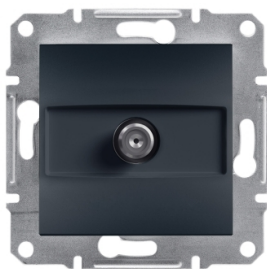


Product data sheet

Specifications



Asfora, SAT socket intermediate, 4dB, anthracite

EPH3700271

⚠ Discontinued on: Jun 30, 2023

⚠ Discontinued

Main

Range	Asfora
Product Or Component Type	SAT socket
Device Presentation	Mechanism with fixing frame
Tv Socket Type	Intermediate socket (passage)
Wiring Device Additional Information	For series distribution systems
Type Of Packing	Flow-pack

Complementary

Device Mounting	Flush
Fixing Mode	Claws51...80 mm
Socket Number	1
Sat Connector	F type
Attenuation	4 dB
Colour Tint	Anthracite
Surface Finish	Painted
Material	ABS (acrylonitrile butadiene-styrene): central plate
Dc Current Flow	In SAT socket
Number Per Line	4
Connections - Terminals	Screwless terminals
Conductor Material	Copper
Height	71 mm
Width	71 mm
Depth	42 mm
Projecting Depth	13 mm
Net Weight	0.075 kg
Ip Degree Of Protection	IP20

Environment

Quality Labels	CE
----------------	----

Packing Units

Disclaimer: This documentation is not intended as a substitute for and is not to be used for determining suitability or reliability of these products for specific user applications

Unit Type Of Package 1	PCE
Number Of Units In Package 1	1
Package 1 Height	16.0 cm
Package 1 Width	11.0 cm
Package 1 Length	5.0 cm
Package 1 Weight	78.0 g
Unit Type Of Package 2	CAR
Number Of Units In Package 2	10
Package 2 Height	9.1 cm
Package 2 Width	18.5 cm
Package 2 Length	27.5 cm
Package 2 Weight	1.039 kg
Unit Type Of Package 3	S04
Number Of Units In Package 3	120
Package 3 Height	30 cm
Package 3 Width	40 cm
Package 3 Length	60 cm
Package 3 Weight	13.219 kg

Sustainability

Green Premium™ label is Schneider Electric's commitment to delivering products with best-in-class environmental performance. Green Premium promises compliance with the latest regulations, transparency on environmental impacts, as well as circular and low-CO₂ products.

Guide to assessing product sustainability is a white paper that clarifies global eco-label standards and how to interpret environmental declarations.

[Learn more about Green Premium >](#)

[Guide to assess a product's sustainability >](#)

Well-being performance

	Toxic Heavy Metal Free	
	Mercury Free	
	Rohs Exemption Information	Yes
Eu Rohs Directive	Compliant	EU RoHS Declaration
China Rohs Regulation	China RoHS declaration	Pro-active China RoHS declaration (out of China RoHS legal scope)
Weee	The product must be disposed on European Union markets following specific waste collection and never end up in rubbish bins	