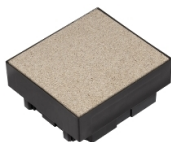


Product data sheet

Specifications



Ultra - screeded floor box - 4 modules

ETK44834

 **Discontinued on:** Jun 30, 2023

 **Discontinued**

Main

Range Of Product	Ultra
Product Or Component Type	Screeded floor box
Type Of Floor	Screeded floor
Floor Box Shape	Square
Product Destination	Wiring device 45 x 45 mm Wiring device 22.5 x 45 mm
Colour Tint	Black (RAL 9004)
Quantity Per Set	Set of 3

Complementary

Fixing Mode	Cast-in
Number Of Modules	4 modules
Material	PC/ABS
Height	90 mm
Width	189 mm
Depth	167 mm

Environment

Standards	IEC 60670-1 UNE 20451
Ambient Air Temperature For Operation	-5...60 °C
Ip Degree Of Protection	IP20

Packing Units

Unit Type Of Package 1	PCE
Number Of Units In Package 1	1
Package 1 Height	7.7 cm
Package 1 Width	16.7 cm
Package 1 Length	18.8 cm
Package 1 Weight	538 g
Unit Type Of Package 2	BB1
Number Of Units In Package 2	3

Disclaimer: This documentation is not intended as a substitute for and is not to be used for determining suitability or reliability of these products for specific user applications

Package 2 Height	19 cm
Package 2 Width	22 cm
Package 2 Length	28.5 cm
Package 2 Weight	1.8 kg
Unit Type Of Package 3	S04
Number Of Units In Package 3	12
Package 3 Height	30 cm
Package 3 Width	40 cm
Package 3 Length	60 cm
Package 3 Weight	7.96 kg

Contractual warranty

Warranty	18 months
----------	-----------

Sustainability

Green Premium™ label is Schneider Electric's commitment to delivering products with best-in-class environmental performance. Green Premium promises compliance with the latest regulations, transparency on environmental impacts, as well as circular and low-CO₂ products.

Guide to assessing product sustainability is a white paper that clarifies global eco-label standards and how to interpret environmental declarations.

[Learn more about Green Premium >](#)

[Guide to assess a product's sustainability >](#)



RoHS/REACH

Well-being performance

✓ Reach Free Of Svhc

✓ Toxic Heavy Metal Free

✓ Mercury Free

✓ Rohs Exemption Information Yes

Certifications & Standards

Reach Regulation	REACH Declaration
Eu Rohs Directive	Pro-active compliance (Product out of EU RoHS legal scope) EU RoHS Declaration
China Rohs Regulation	China RoHS declaration Pro-active China RoHS declaration (out of China RoHS legal scope)
Circularity Profile	No need of specific recycling operations