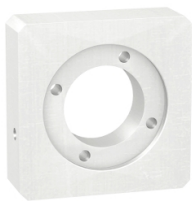


# Product data sheet

Specifications



adaptation kit, Lexium, GBK, size 60, 23mm, for assembly motor and gearbox

GBK0600703F

## Main

Range Compatibility	Lexium 32i Lexium 62 ILM Lexium 32 Lexium 52 Lexium 62
Product Or Component Type	Adaptation kit
Device Short Name	GBK
Accessory / Separate Part Category	Adaptation accessory
Product Compatibility	BMH BSH MH3 SH3 ILM BMI
Accessory / Separate Part Destination	For assembly motor and gearbox
Kit Composition	Screws and bolts for mounting An adaptor plate A shaft end adaptor
Gearbox External Diameter	60 mm

## Complementary

Motor Flange Size	70 mm
Number Of Motor Stacks	3 2 1
Length	23 mm
Net Weight	0.2 kg

## Packing Units

Unit Type Of Package 1	PCE
Number Of Units In Package 1	1
Package 1 Height	8.000 cm
Package 1 Width	16.200 cm
Package 1 Length	17.800 cm
Package 1 Weight	315.000 g
Unit Type Of Package 2	P06
Number Of Units In Package 2	50
Package 2 Height	75.000 cm

Disclaimer: This documentation is not intended as a substitute for and is not to be used for determining suitability or reliability of these products for specific user applications

Package 2 Width	60.000 cm
Package 2 Length	80.000 cm
Package 2 Weight	28.750 kg

## Contractual warranty

Warranty	18 months
----------	-----------

## Sustainability

**Green Premium™ label** is Schneider Electric's commitment to delivering products with best-in-class environmental performance. Green Premium promises compliance with the latest regulations, transparency on environmental impacts, as well as circular and low-CO<sub>2</sub> products.

**Guide to assessing product sustainability** is a white paper that clarifies global eco-label standards and how to interpret environmental declarations.

[Learn more about Green Premium >](#)

[Guide to assess a product's sustainability >](#)



Transparency   RoHS/REACH

## Well-being performance

✓ Mercury Free

✓ Rohs Exemption Information   [Yes](#)

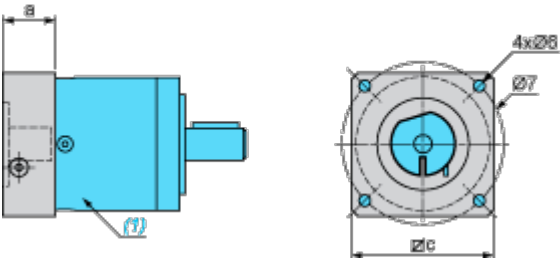
✓ Pvc Free

## Certifications & Standards

Reach Regulation	<a href="#">REACH Declaration</a>
Eu Rohs Directive	Pro-active compliance (Product out of EU RoHS legal scope)
China Rohs Regulation	<a href="#">China RoHS declaration</a> Product out of China RoHS scope. Substance declaration for your information
Environmental Disclosure	<a href="#">Product Environmental Profile</a>
Circularity Profile	No need of specific recycling operations
California Proposition 65	WARNING: This product can expose you to chemicals including: Lead and lead compounds, which is known to the State of California to cause cancer and birth defects or other reproductive harm. For more information go to <a href="#">www.P65Warnings.ca.gov</a>

Dimensions Drawings

Dimensions



(1) Gearbox

Values in mm

a	c	Ø6	Ø7
23	70	M5	82

Values in in.

a	c	Ø6	Ø7
0.91	2.76	M5	3.23