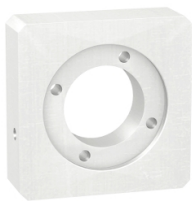


Product data sheet

Specifications



adaptation kit, Lexium, GBK, size 80, 21mm, for assembly motor and gearbox

GBK0800702F

Main

Range Compatibility	Lexium 32i Lexium 32 Lexium 62 ILM Lexium 62 Lexium 52
Product Or Component Type	Adaptation kit
Device Short Name	GBK
Accessory / Separate Part Category	Adaptation accessory
Product Compatibility	SH3 ILM MH3 BMI BSH BMH
Accessory / Separate Part Destination	For assembly motor and gearbox
Kit Composition	Screws and bolts for mounting An adaptor plate A shaft end adaptor
Gearbox External Diameter	80 mm

Complementary

Motor Flange Size	70 mm
Number Of Motor Stacks	2 1
Length	21.2 mm
Net Weight	0.45 kg

Packing Units

Unit Type Of Package 1	PCE
Number Of Units In Package 1	1
Package 1 Height	10.000 cm
Package 1 Width	19.500 cm
Package 1 Length	17.500 cm
Package 1 Weight	330.000 g
Unit Type Of Package 2	P06
Number Of Units In Package 2	50
Package 2 Height	75.000 cm

Disclaimer: This documentation is not intended as a substitute for and is not to be used for determining suitability or reliability of these products for specific user applications

Package 2 Width	60.000 cm
Package 2 Length	80.000 cm
Package 2 Weight	32.300 kg

Contractual warranty

Warranty	18 months
----------	-----------

Sustainability

Green Premium™ label is Schneider Electric's commitment to delivering products with best-in-class environmental performance. Green Premium promises compliance with the latest regulations, transparency on environmental impacts, as well as circular and low-CO₂ products.

Guide to assessing product sustainability is a white paper that clarifies global eco-label standards and how to interpret environmental declarations.

[Learn more about Green Premium >](#)

[Guide to assess a product's sustainability >](#)



Transparency RoHS/REACH

Well-being performance

✓ Mercury Free

✓ Rohs Exemption Information [Yes](#)

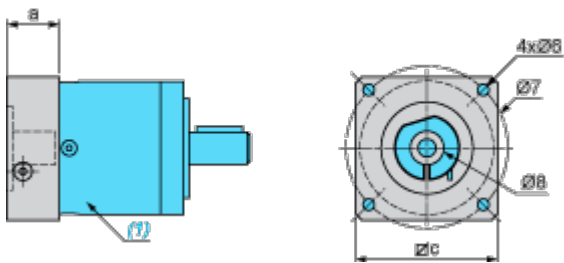
✓ Pvc Free

Certifications & Standards

Reach Regulation	REACH Declaration
Eu Rohs Directive	Pro-active compliance (Product out of EU RoHS legal scope)
China Rohs Regulation	China RoHS declaration Product out of China RoHS scope. Substance declaration for your information
Environmental Disclosure	Product Environmental Profile
Circularity Profile	No need of specific recycling operations
California Proposition 65	WARNING: This product can expose you to chemicals including: Lead and lead compounds, which is known to the State of California to cause cancer and birth defects or other reproductive harm. For more information go to www.P65Warnings.ca.gov

Dimensions Drawings

Dimensions



- (1) Gearbox
- Ø8 shaft end adaptor in case motor shaft diameter is smaller than gearbox input coupling diameter

Values in mm

a	c	Ø6	Ø7	Ø8 (outer diameter x inner diameter x length)
21.2	80	M5	82	19 x 11 x 26

Values in in.

a	c	Ø6	Ø7	Ø8 (outer diameter x inner diameter x length)
0.83	3.15	M5	3.23	0.74 x 0.43 x 1.02