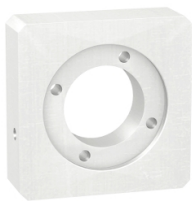


Product data sheet

Specifications



adaptation kit, Lexium, GBK, size 120, 21mm, for assembly motor and gearbox

GBK1200702F

Main

| | |
|---------------------------------------|--|
| Range Compatibility | Lexium 62 Lexium 32 Lexium 62 ILM Lexium 52 Lexium 32i |
| Product Or Component Type | Adaptation kit |
| Device Short Name | GBK |
| Accessory / Separate Part Category | Adaptation accessory |
| Product Compatibility | BMI SH3 BMH ILM BSH MH3 |
| Accessory / Separate Part Destination | For assembly motor and gearbox |
| Kit Composition | A shaft end adaptor Screws and bolts for mounting An adaptor plate |
| Gearbox External Diameter | 120 mm |

Complementary

| | |
|------------------------|---------|
| Motor Flange Size | 70 mm |
| Number Of Motor Stacks | 2 1 |
| Length | 21.8 mm |
| Net Weight | 0.65 kg |

Packing Units

| | |
|------------------------------|---------|
| Unit Type Of Package 1 | PCE |
| Number Of Units In Package 1 | 1 |
| Package 1 Height | 8.0 cm |
| Package 1 Width | 16.2 cm |
| Package 1 Length | 17.8 cm |
| Package 1 Weight | 760.5 g |
| Unit Type Of Package 2 | S06 |
| Number Of Units In Package 2 | 50 |
| Package 2 Height | 73.5 cm |

Disclaimer: This documentation is not intended as a substitute for and is not to be used for determining suitability or reliability of these products for specific user applications

| | |
|------------------|---------|
| Package 2 Width | 60.0 cm |
| Package 2 Length | 80.0 cm |
| Package 2 Weight | 51.0 kg |

Contractual warranty

| | |
|----------|-----------|
| Warranty | 18 months |
|----------|-----------|

Sustainability

Green Premium™ label is Schneider Electric's commitment to delivering products with best-in-class environmental performance. Green Premium promises compliance with the latest regulations, transparency on environmental impacts, as well as circular and low-CO₂ products.

Guide to assessing product sustainability is a white paper that clarifies global eco-label standards and how to interpret environmental declarations.

[Learn more about Green Premium >](#)

[Guide to assess a product's sustainability >](#)



Transparency RoHS/REACH

Well-being performance

✓ Mercury Free

✓ Rohs Exemption Information [Yes](#)

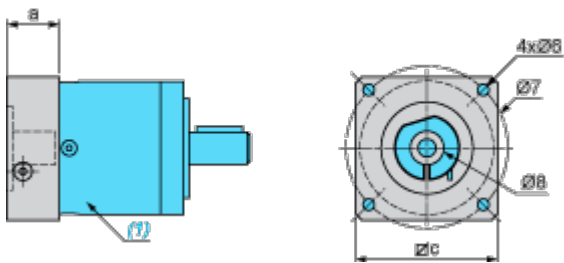
✓ Pvc Free

Certifications & Standards

| | |
|---------------------------|---|
| Reach Regulation | REACH Declaration |
| Eu Rohs Directive | Pro-active compliance (Product out of EU RoHS legal scope) |
| China Rohs Regulation | China RoHS declaration Product out of China RoHS scope. Substance declaration for your information |
| Environmental Disclosure | Product Environmental Profile |
| Circularity Profile | No need of specific recycling operations |
| California Proposition 65 | WARNING: This product can expose you to chemicals including: Lead and lead compounds, which is known to the State of California to cause cancer and birth defects or other reproductive harm. For more information go to www.P65Warnings.ca.gov |

Dimensions Drawings

Dimensions



- (1) Gearbox
- Ø8 shaft end adaptor in case motor shaft diameter is smaller than gearbox input coupling diameter

Values in mm

| a | c | Ø6 | Ø7 | Ø8 (outer diameter x inner diameter x length) |
|------|-----|----|----|---|
| 21.8 | 115 | M5 | 82 | 24 x 11 x 36 |

Values in in.

| a | c | Ø6 | Ø7 | Ø8 (outer diameter x inner diameter x length) |
|------|------|----|------|---|
| 0.85 | 4.53 | M5 | 3.23 | 0.94 x 0.43 x 1.42 |